

## SUMMARY CHARTS

### 1. COVERAGE AND SECTORAL STRUCTURE

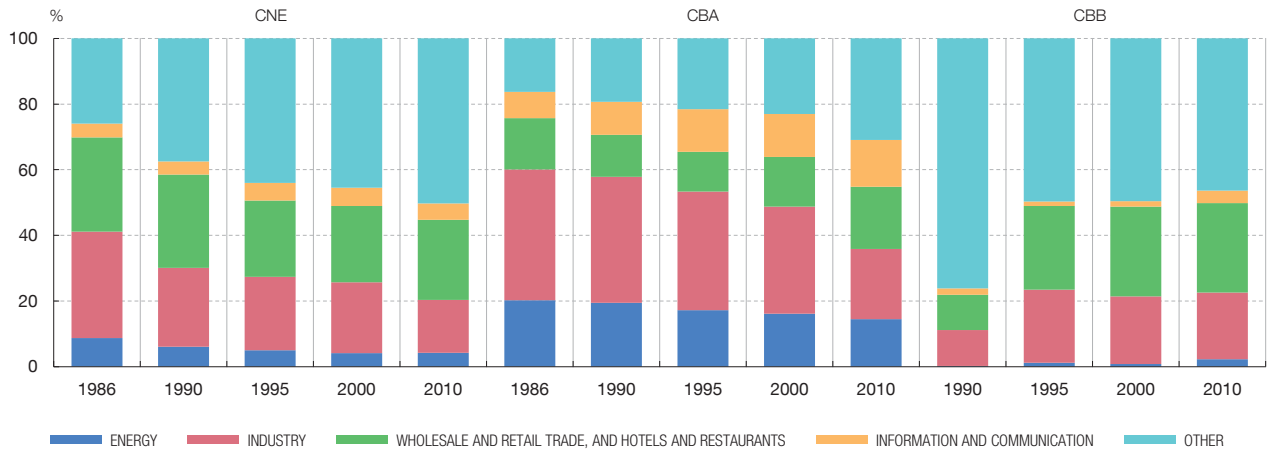
1.1. NUMBER OF CORPORATIONS CBA AND COVERAGE



1.2. NUMBER OF CORPORATIONS CBB (SMALL) AND COVERAGE



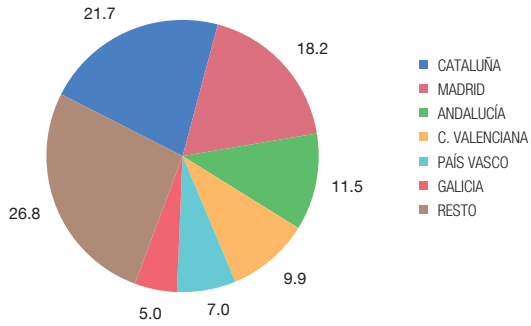
1.3. GROSS VALUE ADDED BY SECTOR



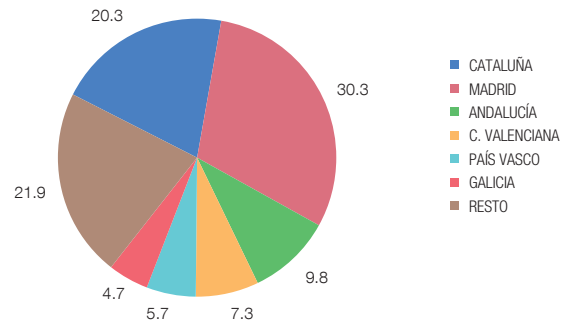
**SUMMARY CHARTS**

**1. COVERAGE AND SECTORAL STRUCTURE**

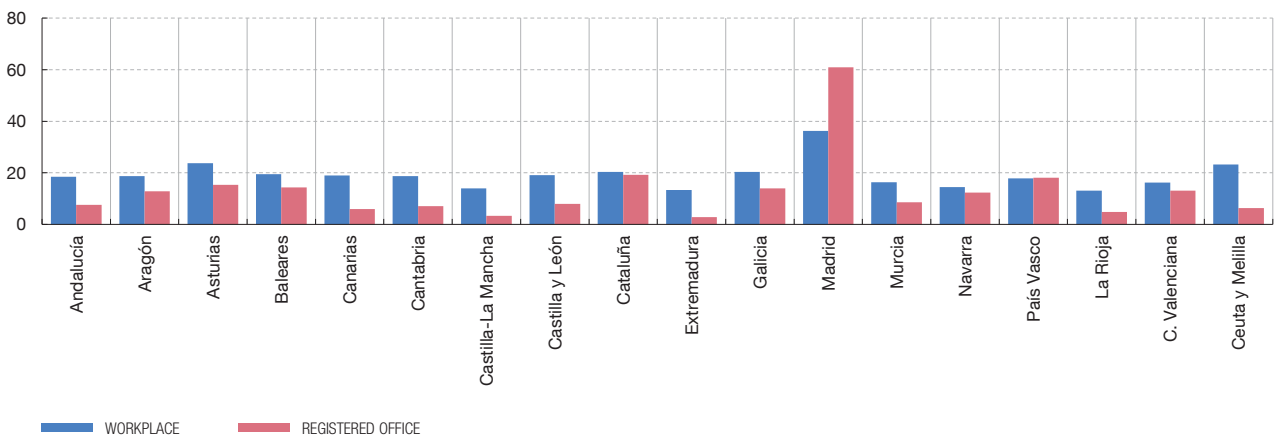
**1.4. TOTAL-ECONOMY COMPENSATION OF EMPLOYEES BY AUTONOMOUS REGION**



**1.5. COMPENSATION OF EMPLOYEES OF CORPORATIONS REPORTING TO THE CBSO BY REGION OF WORKPLACE**



**1.6. COMPENSATION OF EMPLOYEES. CENTRAL BALANCE SHEET DATA OFFICE COVERAGE BY AUTONOMOUS REGION**



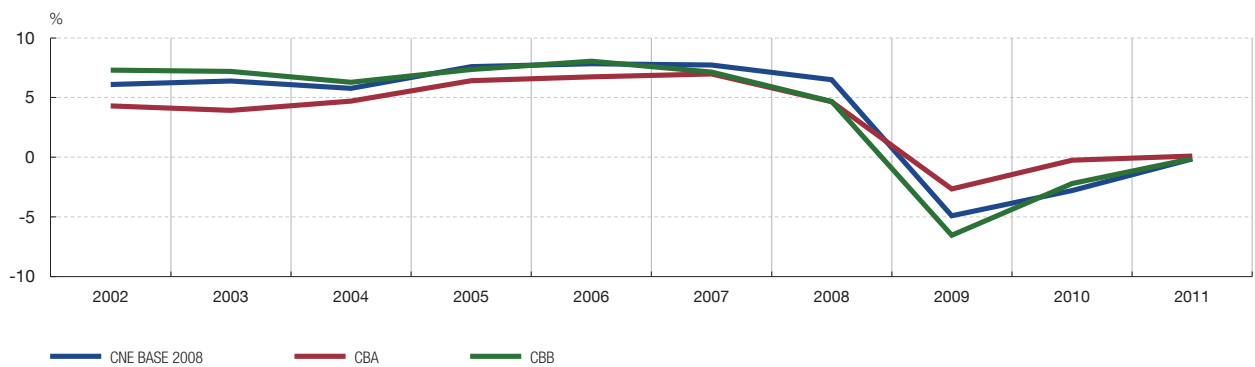
## SUMMARY CHARTS

### 2. REPRESENTATIVENESS OF THE SAMPLES. Comparison of CNE/CBA/CBB information

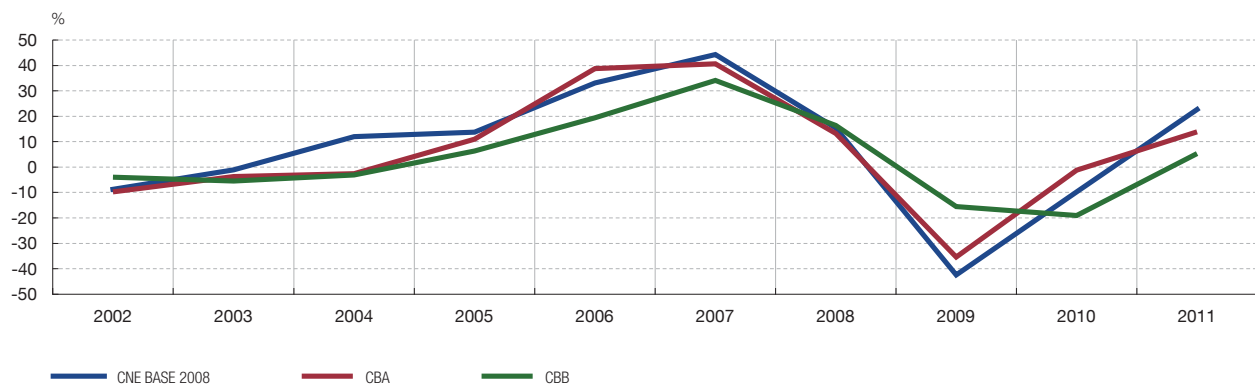
#### 2.1. GROSS VALUE ADDED AT FACTOR COST (Growth rates)



#### 2.2. COMPENSATION OF EMPLOYEES (Growth rates)



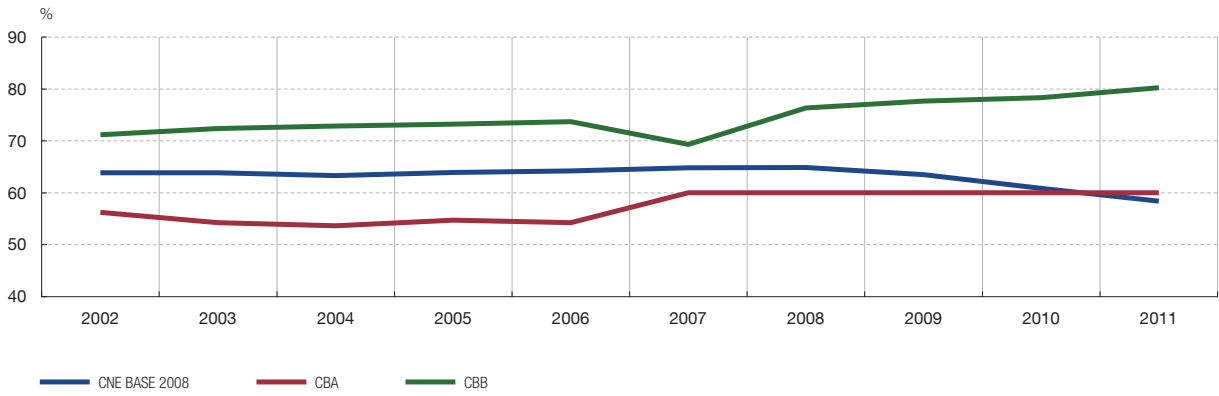
#### 2.3. GASTOS FINANCIEROS (Tasas de variación)



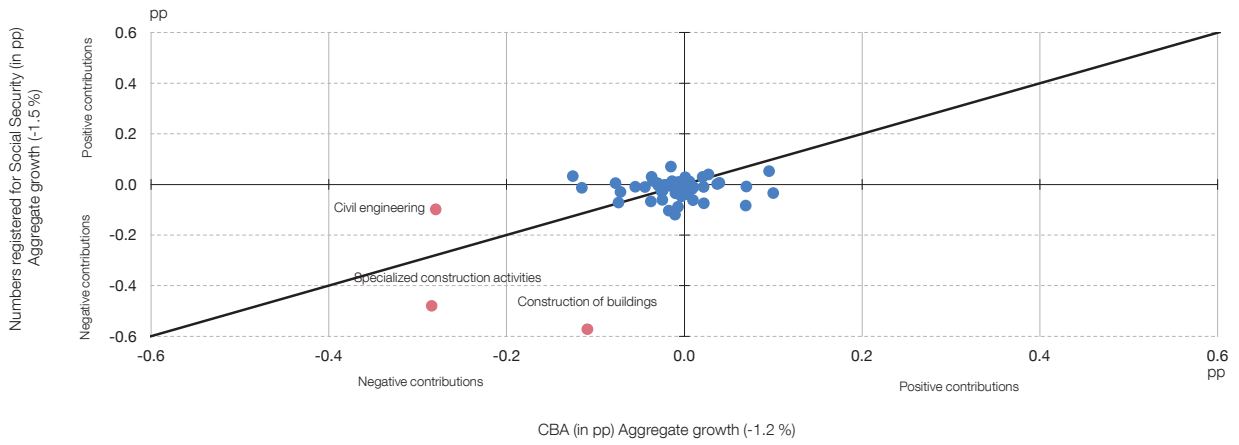
SUMMARY CHARTS

2. REPRESENTATIVENESS OF THE SAMPLES. Comparison of CNE/CBA/CBB information

2.4. COMPENSATION OF EMPLOYEES/GROSS VALUE ADDED



2.5. COMPATIBILITY WITH EMPLOYMENT OF SOCIAL SECURITY STATISTICS (2011)  
Contributions to growth rate of employment by branches of activity

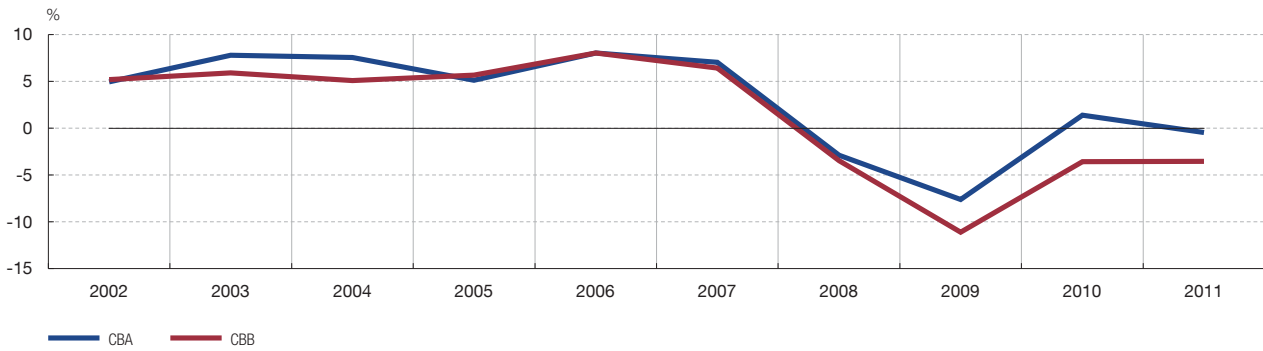


SUMMARY CHARTS

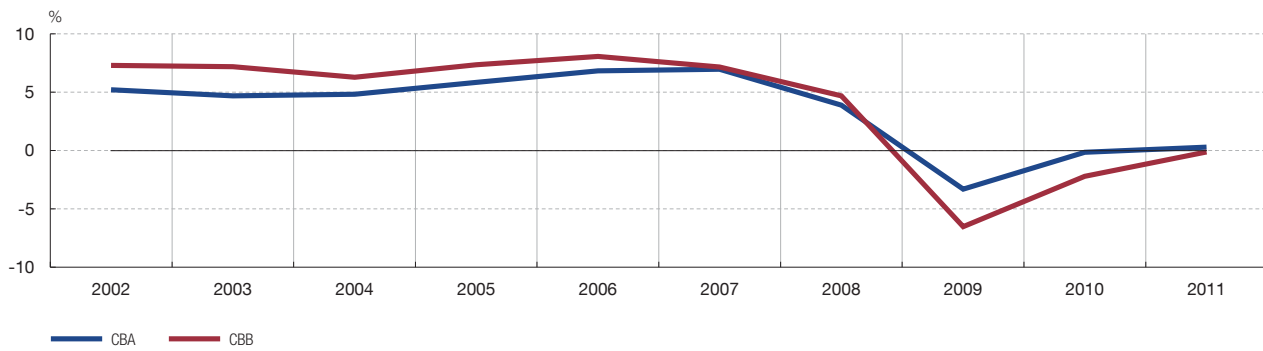
3. RESULTS OF NON-FINANCIAL CORPORATIONS (2002-2011)

3.1. Main indicators for all corporations (CBA) and for small corporations (CBB)

3.1.1. GROSS VALUE ADDED AT FACTOR COST  
(Growth rates)



3.1.2. PERSONNEL COSTS  
(Growth rates)



3.1.3. EMPLOYMENT (Growth rates) AND TEMPORARY EMPLOYMENT

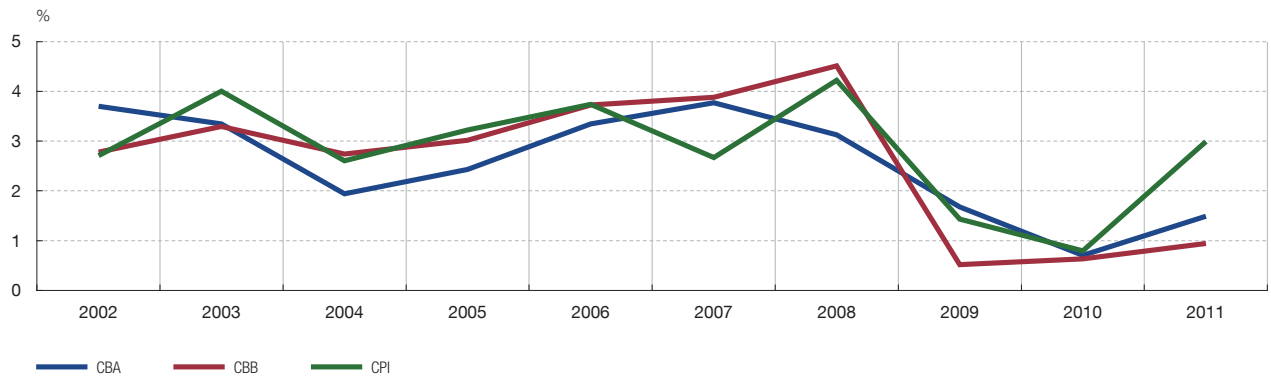


SUMMARY CHARTS

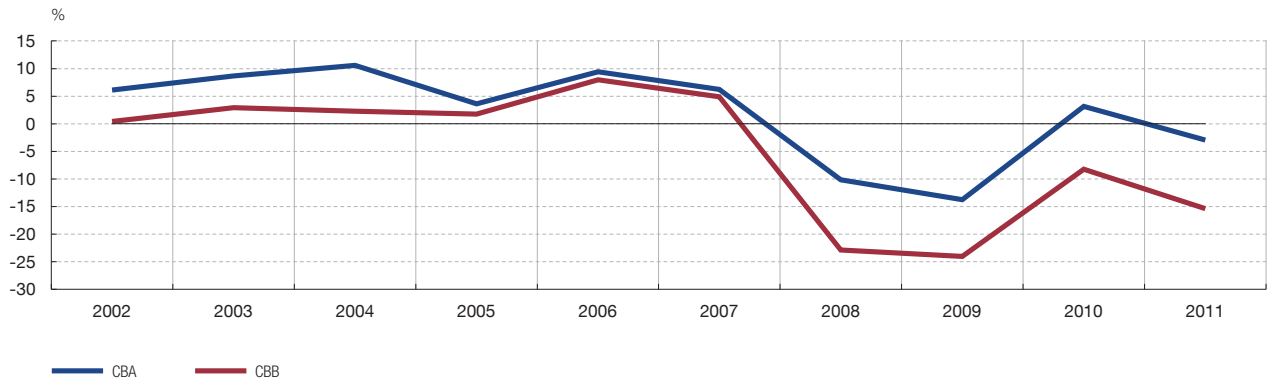
3. RESULTS OF NON-FINANCIAL CORPORATIONS (2002-2011)

3.1. Main indicators for all corporations (CBA) and for small corporations (CBB)

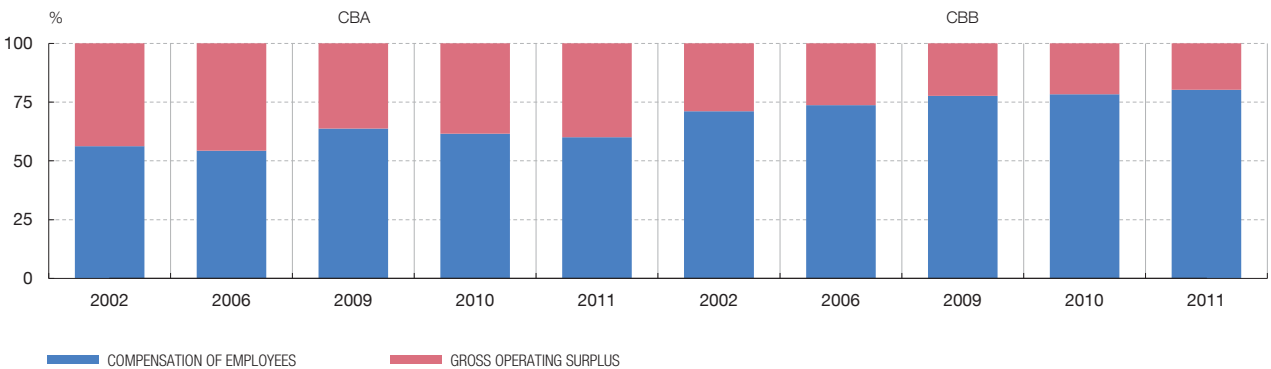
3.1.4. PERSONNEL COSTS PER EMPLOYEE. COMPARISON WITH PREVIOUS YEAR CONSUMER PRICE INDEX (Growth rates)



3.1.5. GROSS OPERATING PROFIT (Growth rates)



3.1.6. DISTRIBUTION OF GVA BETWEEN COMPENSATION OF EMPLOYEES AND GROSS OPERATING SURPLUS

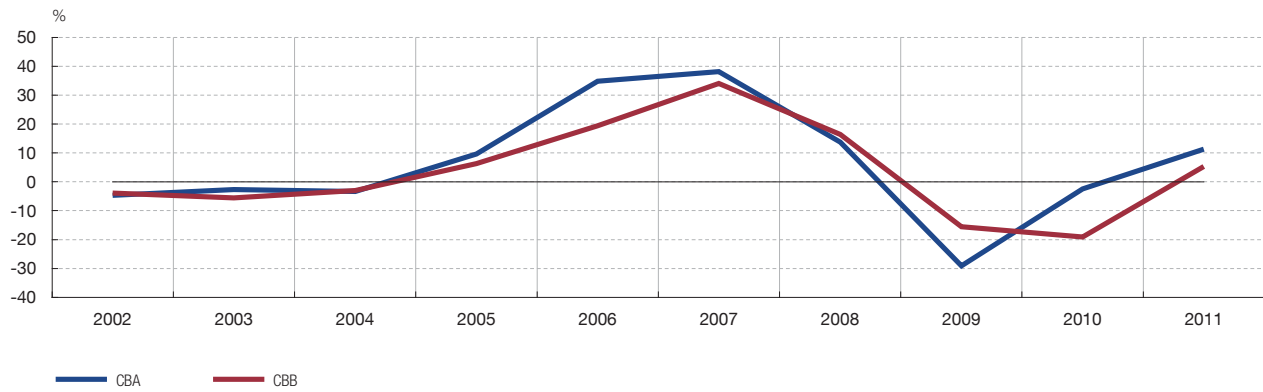


SUMMARY CHARTS

3. RESULTS OF NON-FINANCIAL CORPORATIONS (2002-2011)

3.1. Main indicators for all corporations (CBA) and for small corporations (CBB)

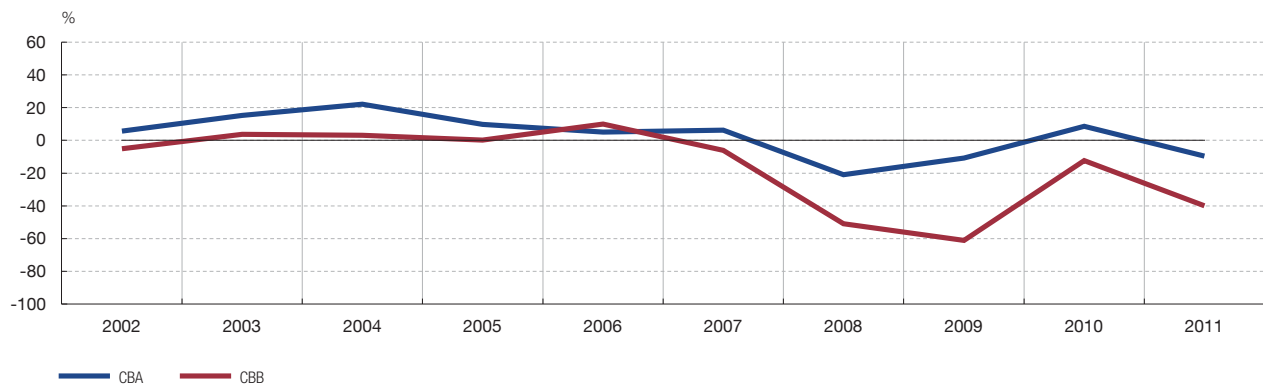
3.1.7. FINANCIAL COSTS  
(Growth rates)



3.1.8. FINANCIAL COSTS / OUTPUT



3.1.9. ORDINARY NET PROFIT  
(Growth rates)

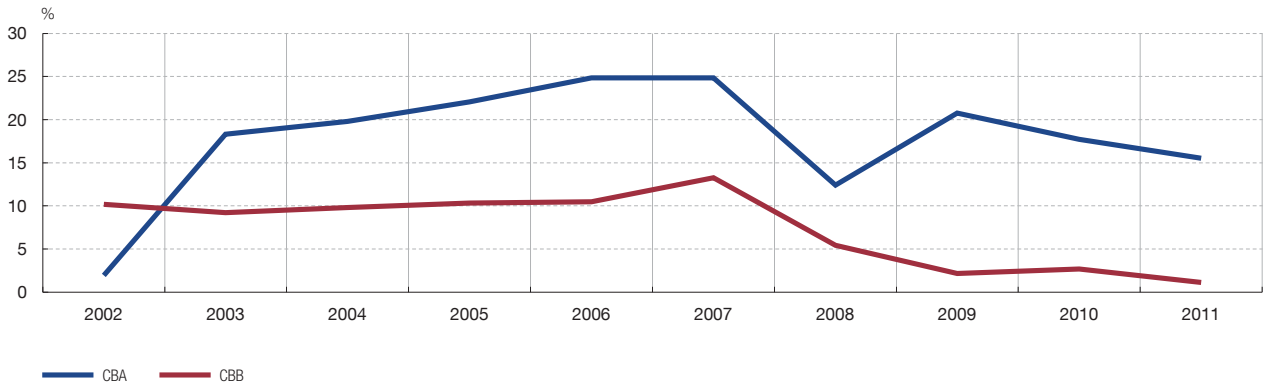


SUMMARY CHARTS

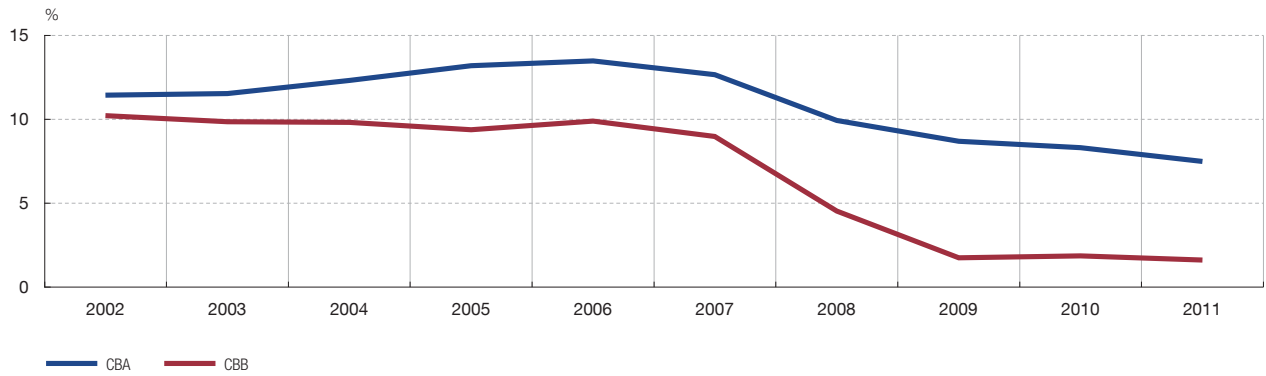
3. RESULTS OF NON-FINANCIAL CORPORATIONS (2002-2011)

3.1. Main indicators for all corporations (CBA) and for small corporations (CBB)

3.1.10. NET RESULT / GROSS VALUE ADDED



3.1.11. ORDINARY RETURN ON EQUITY (R.3)  
(Ratio)



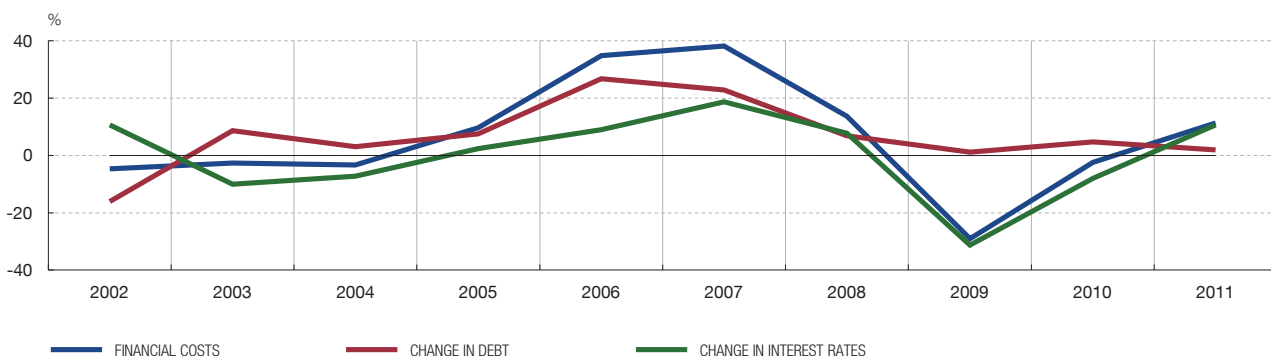


SUMMARY CHARTS

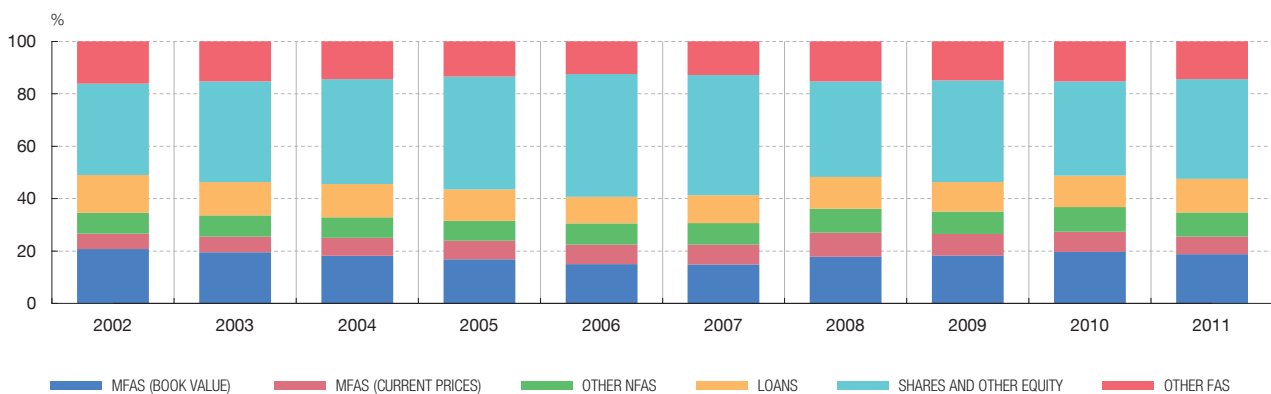
3. RESULTS OF NON-FINANCIAL CORPORATIONS (2002-2011)

3.2. Others indicators for all corporations (CBA)

PROFIT AND LOSS ACCOUNT  
3.2.1. COMPONENTS OF FINANCIAL COSTS  
(Contribution)



BALANCE SHEET AND ITS FLOWS  
3.2.2. ASSETS  
(Structure)



BALANCE SHEET AND ITS FLOWS  
3.2.3. LIABILITIES  
(Structure)



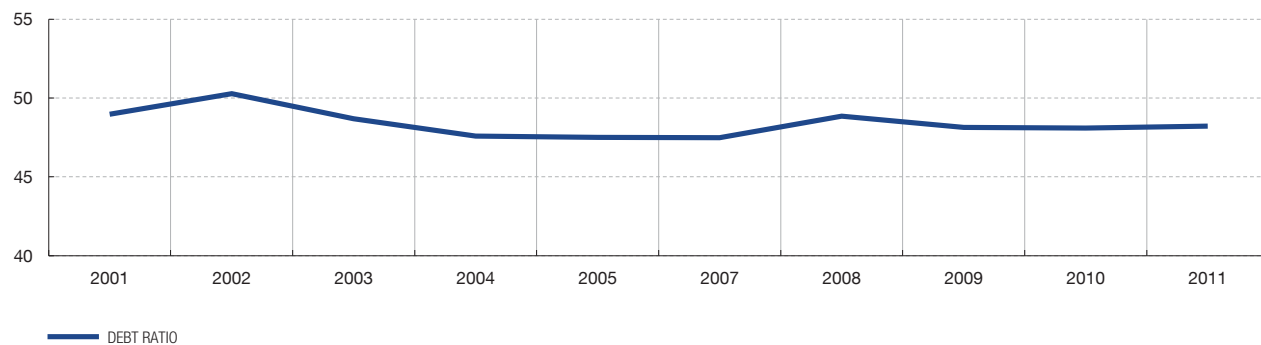
SUMMARY CHARTS

3. RESULTS OF NON-FINANCIAL CORPORATIONS (2002-2011)

3.2. Others indicators for all corporations (CBA)

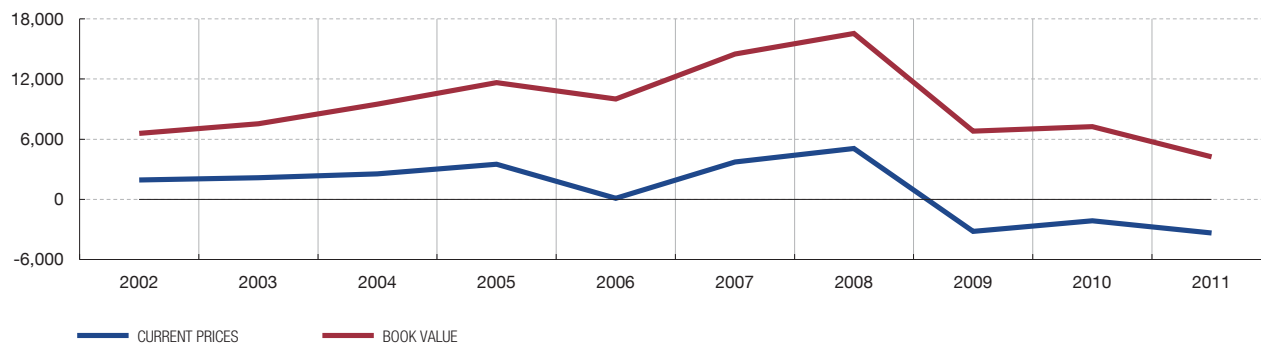
BALANCE SHEET AND ITS FLOWS

3.2.4. DEBT RATIO (E.1 INTEREST-BEARING EXTERNAL FUNDS / NET ASSETS)



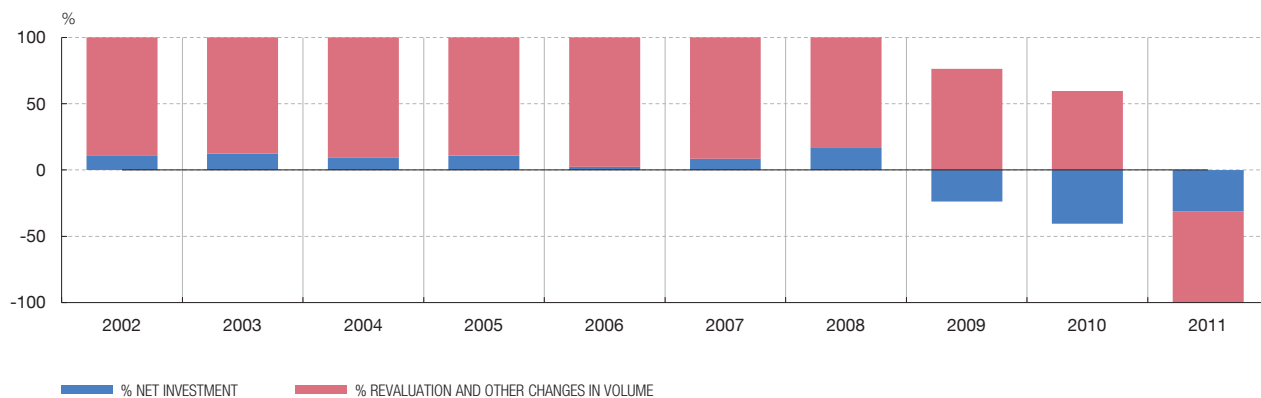
BALANCE SHEET AND ITS FLOWS

3.2.5. NET FIXED CAPITAL FORMATION (Absolute values)



BALANCE SHEET AND ITS FLOWS

3.2.6. COMPOSITION OF INCREASE IN TANGIBLE FIXED ASSETS



**SUMMARY CHARTS**

**3. RESULTS OF NON-FINANCIAL CORPORATIONS (2002-2011)**

**3.2. Others indicators for all corporations (CBA)**

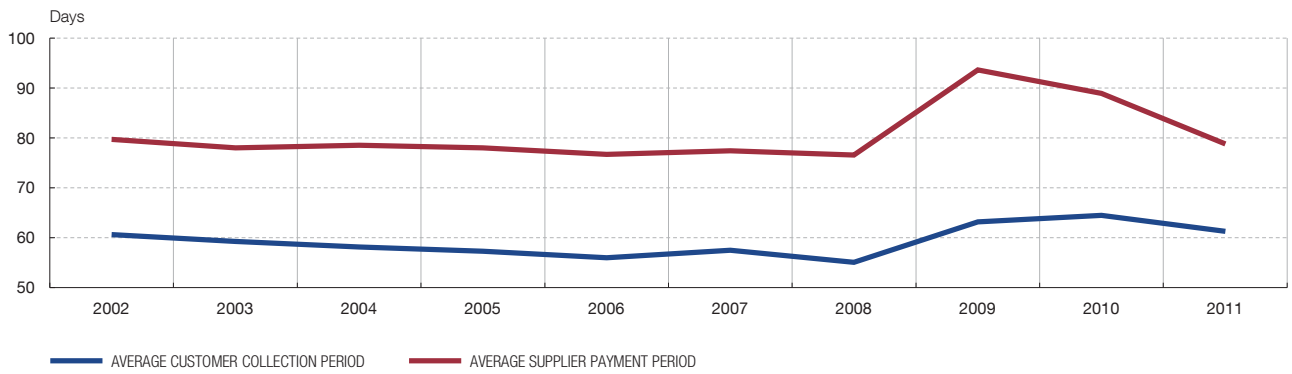
**COMBINED RATIOS**

**3.2.7. RETURN ON INVESTMENT (R.1), COST OF DEBT (R.2) AND THE DIFFERENCE (R.1 - R.2)**



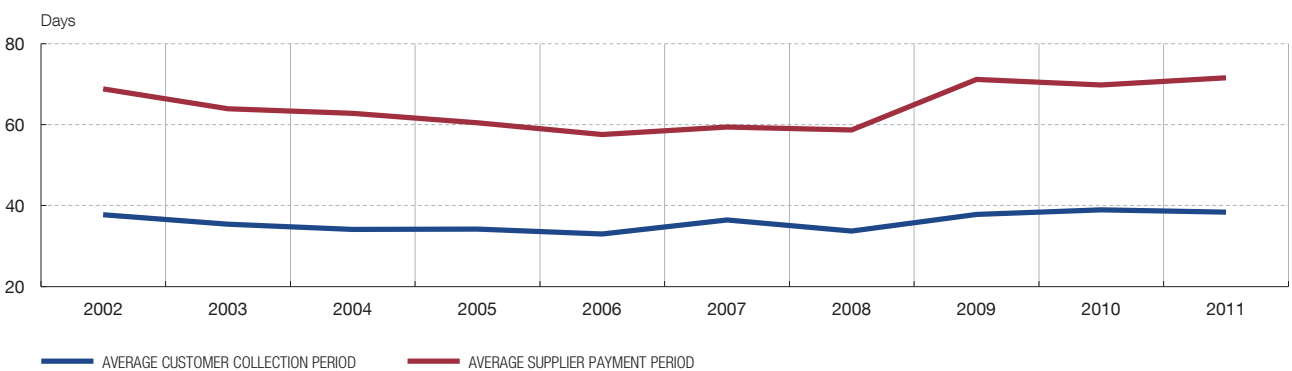
**COMBINED RATIOS**

**3.2.8. AVERAGE CUSTOMER COLLECTION AND SUPPLIER PAYMENT PERIODS. ALL CORPORATIONS**



**COMBINED RATIOS**

**3.2.9. AVERAGE CUSTOMER COLLECTION AND SUPPLIER PAYMENT PERIODS. WHOLESALE AND RETAIL TRADE, AND HOTELS AND RESTAURANTS**

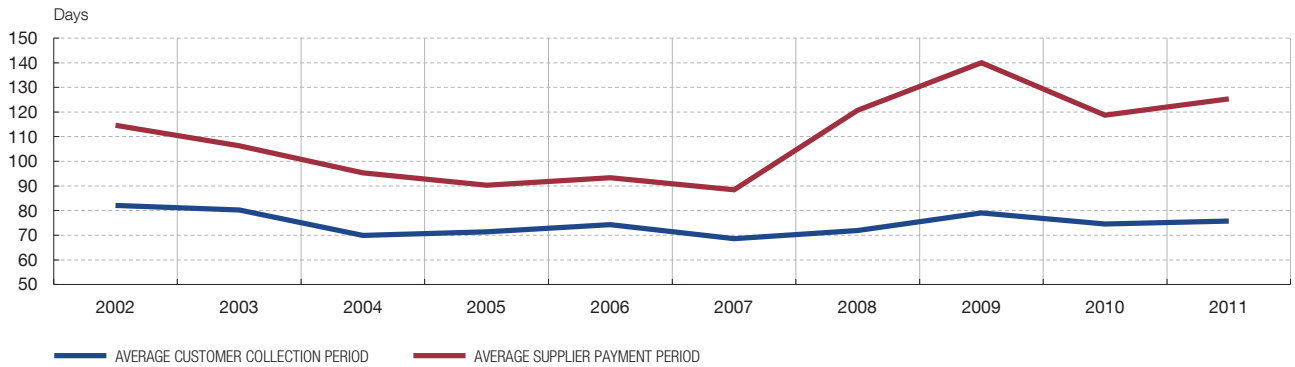


**SUMMARY CHARTS**

**3. RESULTS OF NON-FINANCIAL CORPORATIONS (2002 -2011)**

**3.2. Others indicators for all corporations (CBA)**

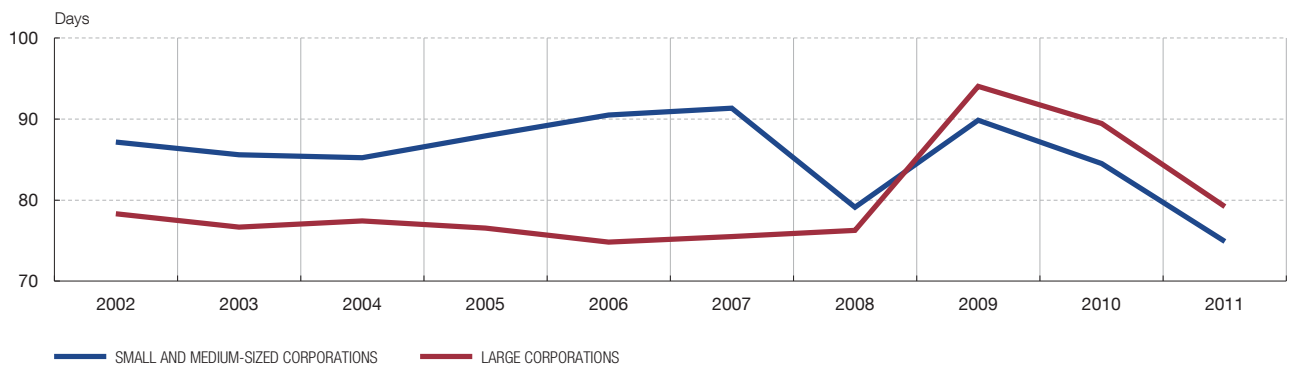
**COMBINED RATIOS**  
**3.2.10. AVERAGE CUSTOMER COLLECTION AND SUPPLIER PAYMENT PERIODS**  
**INFORMATION AND COMMUNICATION**



**COMBINED RATIOS**  
**3.2.11. AVERAGE CUSTOMER COLLECTION PERIOD**  
**BREAKDOWN BY SIZE**



**COMBINED RATIOS**  
**3.2.12. AVERAGE SUPPLIER PAYMENT PERIOD**  
**BREAKDOWN BY SIZE**



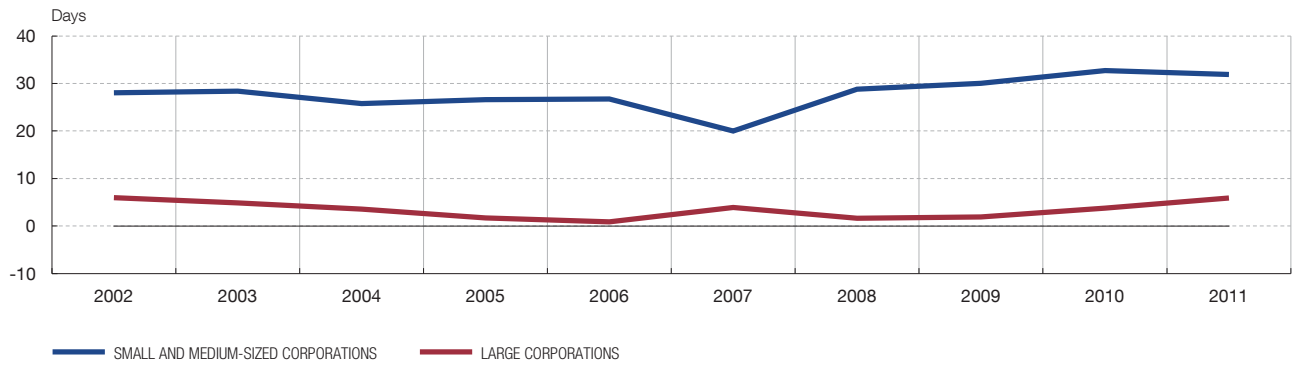
SUMMARY CHARTS

3. RESULTS OF NON-FINANCIAL CORPORATIONS (2002-2011)

3.2. Others indicators for all corporations (CBA)

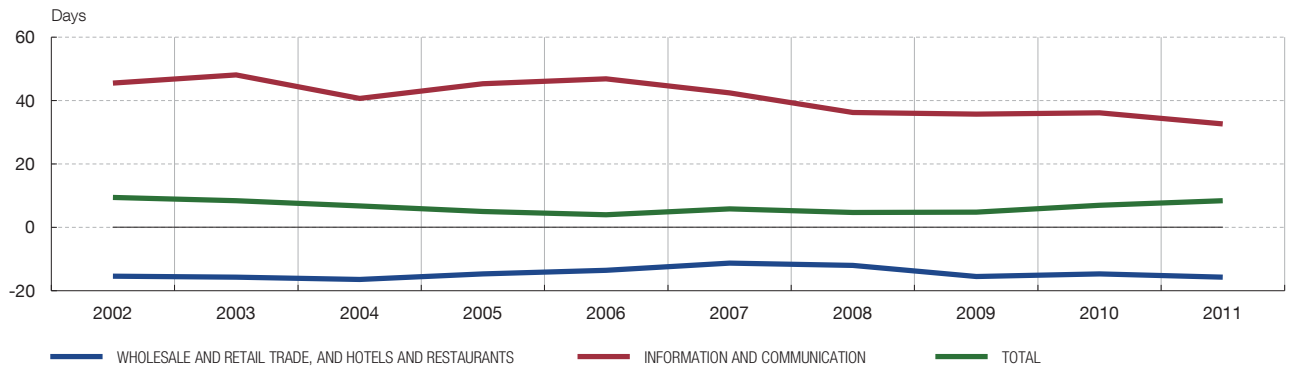
COMBINED RATIOS

3.2.13. NET TRADE FINANCING (CUSTOMERS – SUPPLIERS) / SALES \* 365  
BREAKDOWN BY SIZE



COMBINED RATIOS

3.2.14. NET TRADE FINANCING (CUSTOMERS – SUPPLIERS) / SALES \* 365  
SECTORAL BREAKDOWN



SOURCES: Banco de España and Spanish National Accounts (CNE) (INE)  
See table 1.1, columns 6 and 7.

#### **CHART 1.2**

SOURCES: Banco de España and Spanish National Accounts (CNE) (INE)  
See table 1.1 Mercantile registries, column 5.

#### **CHART 1.3**

SOURCES: Banco de España and Spanish National Accounts (CNE) (INE)  
See table 1.4, column 1 (CNE) and table 1.8 (CBA).

#### **CHART 1.4**

SOURCES: Banco de España and Spanish National Accounts (CNE) (INE)  
See table 1.6, column 7.

#### **CHART 1.5**

SOURCES: Banco de España and Spanish National Accounts (CNE) (INE)  
See table 1.6, column 9.

#### **CHART 1.6**

SOURCES: Banco de España and Spanish National Accounts (CNE) (INE)  
See table 1.6, columns 10 and 11.

#### **CHART 2.1**

SOURCES: Banco de España and Spanish National Accounts (CNE) (INE)  
See table 3.9.1 (CNE), table 3.1.1 (CBA), table 2.1.3 (CBB, Mercantile registries).

#### **CHART 2.2**

SOURCES: Banco de España and Spanish National Accounts (CNE) (INE)  
See table 3.9.1 (CNE), table 3.1.3 (CBA), table 2.1.3 (CBB, Mercantile registries).

#### **CHART 2.3**

SOURCES: Banco de España and Spanish National Accounts (CNE) (INE)  
See table 3.9.1 (CNE), table 3.1.3 (CBA), table 2.1.3 (CBB, Mercantile registries).

#### **CHART 2.4**

SOURCES: Banco de España and Spanish National Accounts (CNE) (INE)  
See table 3.9.1 (CNE), table 3.1.2 (CBA), table 2.1.2 (CBB, Mercantile registries).

#### **CHART 2.5**

SOURCE: Banco de España.

The continuous line depicts the bisector on which, ideally, the observations of each sector of activity should lie in the event of full coincidence between the two sources of statistical information (CBA and Social Security registrations). The observations showing distance from this line are thus those that evidence a greater discrepancy. Their absolute significance arises from two differences: one, between the rates of change observed in both sources; and another, owing to the differences in the weights of the sample and population.

#### **CHART 3.1.1**

SOURCE: Banco de España.  
See table 3.1.1 (CBA), table 2.1.3 (CBB, Mercantile registries).

#### **CHART 3.1.2**

SOURCE: Banco de España.  
See table 2.1.3 (CBA), table 2.1.3 (CBB, Mercantile registries).

#### **CHART 3.1.3**

SOURCE: Banco de España.  
See tables 4.1.3 and 4.1.2 (CBA), table 4.1 (CBB, Mercantile registries).

#### **CHART 3.1.4**

SOURCE: Banco de España.  
See table 4.1.3 (CBA), table 4.1 (CBB, Mercantile registries).

#### **CHART 3.1.5**

SOURCE: Banco de España.  
See table 2.1.3 (CBA), table 2.1.3 (CBB, Mercantile registries).

#### **CHART 3.1.6**

SOURCE: Banco de España.  
See table 3.1.2 (CBA), table 2.1.2 (CBB, Mercantile registries).

#### **CHART 3.1.7**

SOURCE: Banco de España.  
See table 2.1.3 (CBA), table 2.1.3 (CBB, Mercantile registries).

#### **CHART 3.1.8**

SOURCE: Banco de España.  
See table 3.1.2 (CBA), table 2.1.2 (CBB, Mercantile registries).

#### **CHART 3.1.9**

SOURCE: Banco de España.  
See table 2.1.3 (CBA), table 2.1.3 (CBB, Mercantile registries).

#### **CHART 3.1.10**

SOURCE: Banco de España.  
See table 2.1.1 (CBA), table 2.1.1 (CBB, Mercantile registries).

#### **CHART 3.1.11**

SOURCE: Banco de España.  
See table 2.16 (CBA), table 2.7 (CBB, Mercantile registries).

#### **CHART 3.2.1**

SOURCE: Banco de España.  
See table 2.1.3.

#### **CHART 3.2.2**

SOURCE: Banco de España.  
See table 3.4.2.

#### **CHART 3.2.3**

SOURCE: Banco de España.  
See table 3.5.1.

#### **CHART 3.2.4**

SOURCE: Banco de España.  
See Table 2.18. The time series is obtained from the closing balance of the latest complete year (2009 in this case), through the linking of this observation with those derived from the closing balances of each data base. See methodological note.

#### **CHART 3.2.5**

SOURCE: Banco de España.  
See table 3.2.1.

#### **CHART 3.2.6**

SOURCE: Banco de España.  
See table 3.6.

#### **CHART 3.2.7**

SOURCE: Banco de España.  
See tables 2.13 and 2.15.

#### **CHART 3.2.8**

SOURCE: Banco de España.  
See tables 2.23 and 2.24.

#### **CHART 3.2.9**

SOURCE: Banco de España.  
See tables 2.23 and 2.24.

#### **CHART 3.2.10**

SOURCE: Banco de España.  
See tables 2.23 and 2.24.

#### **CHART 3.2.11**

SOURCE: Banco de España.  
See table 2.23.

**CHART 3.2.12**

SOURCE: Banco de España.  
See table 2.24.

**CHART 3.2.13**

SOURCE: Banco de España.  
See table 2.25.

**CHART 3.2.14**

SOURCE: Banco de España.  
See table 2.25.