

ESTIMATING THE OIS TERM PREMIUM  
WITH ANALYST EXPECTATION SURVEYS

2024

BANCO DE **ESPAÑA**  
Eurosistema

Documentos Ocasionales  
N.º 2410

Ricardo Barahona and María Rodríguez-Moreno

## ESTIMATING THE OIS TERM PREMIUM WITH ANALYST EXPECTATION SURVEYS

# Estimating the OIS Term Premium with Analyst Expectation Surveys (\*)

Ricardo Barahona

BANCO DE ESPAÑA

María Rodríguez-Moreno

BANCO DE ESPAÑA

(\*) The views expressed in this paper are those of the authors and do not necessarily coincide with those of the Banco de España and the Eurosystem.

Documentos Ocasionales. N.º 2410

March 2024

<https://doi.org/10.53479/36253>

The Occasional Paper Series seeks to disseminate work conducted at the Banco de España, in the performance of its functions, that may be of general interest.

The opinions and analyses in the Occasional Paper Series are the responsibility of the authors and, therefore, do not necessarily coincide with those of the Banco de España or the Eurosystem.

The Banco de España disseminates its main reports and most of its publications via the Internet on its website at: <http://www.bde.es>.

Reproduction for educational and non-commercial purposes is permitted provided that the source is acknowledged.

© BANCO DE ESPAÑA, Madrid, 2024

ISSN: 1696-2230 (on-line edition)

## **Abstract**

This paper estimates the euro area overnight index swap yield curve, which is considered to be the risk-free yield curve in the euro area, using an affine term structure model. We expand the Adrian, Crump and Moench (2013) procedure with survey data to dissect rates into short-term expectations and term premia. This approach reveals the market expectations of short-term interest rates and monetary policy, and gauges the premium demanded by risk-averse investors in uncertain interest rate environments. As compared to the simpler model, the use of survey information in our estimation yields estimates more aligned with professional expectations data. Our approach enables us to obtain daily forecasts of short-term rates for up to 10 years ahead which are aligned with professional surveys on interest rates. Our estimation of real-time information on short-term rate expectations proves valuable as it complements the survey data, which are typically available at longer intervals.

**Keywords:** affine term structure model, interest rates, survey expectations.

**JEL classification:** E43, E44, G12.

## Resumen

El presente documento estima la curva de rendimiento del *overnight index swap* (OIS) del área del euro —considerada como la curva de rendimiento libre de riesgo en la eurozona— utilizando un modelo afín de la estructura temporal de los tipos de interés. Para ello, ampliamos el procedimiento de Adrian, Crump y Moench (2013) para incluir los datos de encuestas sobre la evolución de los tipos de interés. Este enfoque revela las expectativas del mercado sobre los tipos de interés a corto plazo y sobre la política monetaria, y evalúa la prima exigida por los inversores aversos al riesgo en entornos de tipos de interés inciertos. En comparación con modelos más simples, la utilización de información procedente de encuestas produce estimaciones más alineadas con los datos de expectativas profesionales. Este enfoque nos permite obtener pronósticos diarios de los tipos a corto y a largo plazo que se encuentran alineados con las encuestas profesionales sobre tipos de interés. Además, nuestra estimación en tiempo real sobre expectativas de tipos a corto plazo resulta valiosa, ya que complementa los datos de encuestas, que generalmente están disponibles a intervalos más largos.

**Palabras clave:** estructura temporal de los tipos de interés, modelo afín, expectativas de encuestas.

**Códigos JEL:** E43, E44, G12.

## Índice

**Abstract 5**

**Resumen 6**

**1 Introduction 8**

**2 Methodology 9**

2.1 State variables and expected excess returns 9

2.2 Inclusion of interest rate survey expectation 10

2.3 Estimation 11

2.4 Model implied yields and term premium 11

2.5 Real time estimation and frequency mismatch 12

**3 Data 13**

**4 Empirical Results 14**

4.1 Model Fit and Term Premia Estimation 14

4.2 Comparing model short term interest rate expectations 15

**5 Additional applications 18**

**6 Conclusion 19**

**References 20**

## 1 Introduction

In this paper we estimate the euro area overnight index swap (OIS) yield curve, considered to be the risk-free yield curve in the euro area. For that aim, we combine the methods proposed by Adrian, Crump and Moench (2013, ACM henceforth) and Malik and Meldrum (2016) to estimate an affine term structure model.<sup>1</sup> This approach allows us to decompose rates into a short term expectations component and a term premium component taking into account survey expectations. The decomposition provides valuable insights into market participants' views on short term interest rates and monetary policy, as well as the extent to which risk-averse investors demand a premium for holding these instruments in an environment of interest rate uncertainty. By incorporating survey information, we aim to enhance the accuracy and reliability of the decomposition, enabling us to better understand market expectations and risk premia.

Our findings indicate significant differences in outcomes when survey information is incorporated, corroborating the research of Kim and Orphanides (2012). We show that this is also the case for the euro area yield curve and including information of survey expectations mitigates the underestimation of the short term interest rates implied by the standard ACM model, which doesn't use survey information. For instance, during the recent rate hike cycle, our model with surveys information attributes a substantial portion of the rise in long term rates to an increase in market participant's expectations of the short term rate. In contrast, a simpler model without survey expectations attributes a higher proportion of the rise to market risk.

The integration of survey information into our model also enables us to obtain daily estimates of the expected short term rate at various horizons, up to 10 years. These estimates align with the Survey of Monetary Analysts (SMA) and the Survey of Professional Forecasters (SPF). This real-time information on short term rate expectations proves valuable, as it complements the survey data, which is only available at longer intervals.

In conclusion, our affine term structure model, enriched with survey information, provides a robust framework for estimating the euro area OIS yield curve. This approach enhances our understanding of market expectations for short term interest rates and allows for a deeper analysis of risk premia. Additionally, the integration of survey data enables us to obtain timely estimates of short term rate expectations, thereby providing valuable information for monetary policy analysis and decision-making.

---

<sup>1</sup> Adrian, Crump and Moench (2013) and Malik and Meldrum (2016) estimate term structure models for the US and UK yield curves respectively.



## 2 Methodology

### 2.1 State variables and expected excess returns

This section sets out the key equations of a standard Gaussian Affine Term Structure Model (ATSM), following ACM. We assume that the dynamics of a  $K \times 1$  vector of pricing factors,  $X_t$ , evolve according to the following Gaussian autoregression (VAR):

$$X_{t+1} = \mu + \Phi X_t + v_{t+1}, \quad (1)$$

where the shocks  $v_{t+1} \sim N(0, \Sigma)$  are conditionally Gaussian, homoskedastic and independent across time. We denote  $P_t^{(n)}$  the zero-coupon bond price with a maturity  $n$  at time  $t$ . The assumption of no-arbitrage implies (Dybvig and Ross, 1987) the existence of a pricing kernel  $M_{t+1}$  such that

$$P_t^{(n)} = E_t \left[ M_{t+1} P_{t+1}^{(n-1)} \right], \quad (2)$$

We assume that the pricing kernel  $M_{t+1}$  is exponentially affine:

$$M_{t+1} = \exp \left( -r_t - \frac{1}{2} \lambda_t' \lambda_t - \lambda_t' \Sigma^{-\frac{1}{2}} v_{t+1} \right), \quad (3)$$

where  $r_t = \ln P_t^{(1)}$  denotes the continuously compounded one-period risk-free rate, which is affine in the factors:

$$r_t = \delta_0 + \delta_1' X_t + \varepsilon_t, \quad (4)$$

We further assume that market prices of risk are of the essentially affine form as suggested in Duffee (2002):

$$\lambda_t = \Sigma^{-\frac{1}{2}} (\lambda_0 + \lambda_1 X_t). \quad (5)$$

The log excess one-period holding return of a bond maturing in  $n$  periods is defined as:

$$P_{t+1}^{(n-1)} = \ln P_{t+1}^{(n-1)} - \ln P_t^{(n)} - r_t. \quad (6)$$

Using Eqs. (3) and (6) in (2), ACM show that

$$E_t \left[ \exp \left( r_{X_{t+1}}^{(n-1)} - \frac{1}{2} \lambda_t' \lambda_t - \lambda_t' \Sigma^{-\frac{1}{2}} v_{t+1} \right) \right] = 1, \quad (7)$$

and under the assumption of joint normality of  $\{r_{X_{t+1}}^{(n-1)}, v_{t+1}\}$  they demonstrate that

$$E_t \left[ r_{X_{t+1}}^{(n-1)} \right] = \text{Cov}_t \left[ r_{X_{t+1}}^{(n-1)}, v_{t+1}' \Sigma^{-\frac{1}{2}} \lambda_t \right] - \frac{1}{2} \text{Var}_t \left[ r_{X_{t+1}} \right]. \quad (8)$$

By denoting  $\beta^{(n-1)} = \text{Cov}_t \left[ r_{t+1}^{(n-1)}, v_{t+1}' \right] \Sigma^{-1}$  and using Eq. (5), Eq. (8) can be rewritten as

$$E_t \left[ r_{t+1}^{(n-1)} \right] = \beta^{(n-1)} \left[ \lambda_0 + \lambda_1 X_t \right] - \frac{1}{2} \text{Var}_t \left[ r_{t+1}^{(n-1)} \right]. \quad (9)$$

We can use Eq. (9) to decompose the unexpected excess return into a component that is correlated with  $v_{t+1}$  and another which is conditionally orthogonal:

$$r_{t+1}^{(n-1)} - E_t \left[ r_{t+1}^{(n-1)} \right] = \beta^{(n-1)'} v_{t+1} + e_{t+1}^{(n-1)}, \quad (10)$$

where  $e_{t+1}^{(n-1)} \sim \text{iid}(0, \sigma^2)$ . The return generating process for log excess returns can be written as

$$r_{t+1}^{(n-1)} = \underbrace{\beta^{(n-1)} (\lambda_0 + \lambda_1 X_t)}_{\text{Expected return}} - \underbrace{\frac{1}{2} (\beta^{(n-1)'} \Sigma \beta^{(n-1)} + \sigma^2)}_{\text{Convexity adjustment}} + \underbrace{\beta^{(n-1)'} v_{t+1}}_{\text{Priced return innovation}} + \underbrace{e_{t+1}^{(n-1)}}_{\text{Priced return Error}}. \quad (11)$$

We observe returns for  $t = 1, 2, \dots, T$  and maturities  $n = n_1, n_2, \dots, n_N$ . Stacking Eq. (11) across  $t$  and  $n$ , ACM construct the following expression:

$$rx = \beta' (\lambda_0 1_t + \lambda_1 X) - \frac{1}{2} (B^* \text{vec}(\Sigma) + \sigma^2 1_N') 1_T + \beta' V + E \quad (12)$$

where  $rx$  is and  $N \times T$  matrix of excess returns,  $\beta = [\beta^{(1)}, \beta^{(2)}, \dots, \beta^{(N)}]$  is a  $K \times N$  matrix of factor loadings,  $1_T$  and  $1_N$  are a  $T \times 1$  and  $N \times 1$  vector of ones,  $X = [X_0, X_1, \dots, X_{T-1}]$  is a  $K \times T$  matrix of lagged pricing factors,  $\beta^* = [\text{vec}(\beta^{(1)}, \beta^{(1)'}) \dots \text{vec}(\beta^{(N)}, \beta^{(N)'})]'$  is an  $N \times K^2$  matrix,  $V$  is a  $K \times T$  matrix and  $E$  is an  $N \times T$  matrix.

## 2.2 Inclusion of interest rate survey expectation

In order to improve the identification of the persistence of yields, previous studies suggested the inclusion of survey expectations of future short-term interest rates. For that aim, we follow Malik and Meldrum (2016) who adapt ACM's approach to include the short rate and  $h$ -month ahead survey expectations in the following model:

$$\begin{bmatrix} X_{t+1} \\ r_t \\ E_t[r_{t+h}] \end{bmatrix} = \begin{bmatrix} \mu & \Phi \\ \delta_0 & \delta_1 \\ \delta_0 & \delta_1^h \Phi^h \end{bmatrix} \begin{bmatrix} 1 \\ X_t \end{bmatrix} + v_{t+1} \quad (13)$$

$$v_{t+1} \sim N(0, R_{11})$$

$$R_{11} = \text{diag}([\Sigma \sigma_\varepsilon^2 \sigma_s^2])$$

Eq. (13) settles a VAR model which embedded Eqs. (1) and (4). On top of that, it includes an additional equation which establishes the relationship between survey data and the pricing factors.  $\Sigma$ ,  $\sigma_\varepsilon^2$ ,  $\sigma_s^2$  refers to the variance-covariance matrix of the first, second and third equations of the VAR model, respectively. This setup allows survey data ( $E_t[r_{t+h}]$ ) to inform the path of expectations but without constraining the model to fit the surveys exactly.

## 2.3 Estimation

In this section we provide a brief outline of the estimation technique which is structured in the following three steps, which, closely follow ACM approach.

- 1 We estimate Eq. (13) by maximum likelihood. To fix the starting values of the optimization, we estimate Eqs. (1) and (4) as in ACM which involve OLS estimations. We impose  $\mu = 0$  to ensure that the means of the pricing factors (mean-zero principal components) are equal to their sample averages. Once we have all parameter estimated (i.e.  $\widehat{\Phi}$ ,  $\widehat{\delta}_0$ ,  $\widehat{\delta}_1$ ,  $\widehat{\Sigma}$ ,  $\widehat{\sigma}_e^2$ ,  $\widehat{\sigma}_s^2$ ) we get the innovations of Eq. (1) as follows:  $\widehat{v}_{t+1} = x_{t+1} - \widehat{\Phi}X_t$ . We then stack these innovations into the matrix  $\widehat{V}$  and construct an estimator of the state variable variance-covariance matrix  $\widehat{\Sigma} = \widehat{V}\widehat{V}'/T$ . As factors  $X_t$ , we use the first 3 principal components of the OIS curve.
- 2 We estimate a reduced-form of Eq. (12) using OLS in which we regress excess return on a constant, lagged pricing factors and contemporaneous pricing factor innovations according to

$$rx = a1_T' + \beta' \widehat{V} + cX + E. \quad (14)$$

As result we get the estimated parameters (i.e.  $\widehat{a}$ ,  $\widehat{\beta}$ ,  $\widehat{c}$ ) as well as  $\sigma^2 = \text{tr}(EE')/NT$ . We also construct  $\widehat{B}^*$  from  $\widehat{\beta}$ .

- 3 Using  $\widehat{B}^*$  constructed from  $\widehat{\beta}$  and noting that  $a = \beta'\lambda_0 - \frac{1}{2}(B^* \text{vec}(\Sigma) + \sigma^2 1_N)$  and  $c = \beta'\lambda_1$ , we estimate the price of risk parameters  $\lambda_0$  and  $\lambda_1$  via cross-sectional regression:

$$\lambda_0 = (\widehat{\beta}\widehat{\beta}')^{-1} \widehat{\beta} \left( \widehat{a} + \frac{1}{2} (\widehat{B}^* \text{vec}(\widehat{\Sigma}) + \widehat{\sigma}^2 1_N) \right), \quad (15)$$

$$\lambda_1 = (\widehat{\beta}\widehat{\beta}')^{-1} \widehat{\beta} \widehat{c}. \quad (16)$$

## 2.4 Model implied yields and term premium

Given the assumptions made so far, it can be shown that zero-coupon bond yields are affine functions of the factors (see Piazzesi, 2003)

$$Y_t^{(n)} = - \frac{1}{2} [a_n + b_n' x_t], \quad (17)$$

where the coefficients  $a_n$  and  $b_n$  follow the recursive equations:

$$a_n = a_{n-1} + b_{n-1}' (\mu - \lambda_0) + \frac{1}{2} (b_{n-1}' \Sigma b_{n-1} + \sigma^2) - \delta_0 \quad (18)$$

$$b_n' = b_{n-1}' (\Phi - \lambda_1) - \delta_1'. \quad (19)$$

We have, as initial conditions,  $a_0 = 0$  and  $b_0 = 0$ .

Following the definition of Dai and Singleton (2002), an n-period bond yield can be decomposed as:

$$Y_t^{(n)} = \frac{1}{n} \sum_{i=0}^{n-1} E_t r_{t+i} + TP_t^{(n)}, \quad (20)$$

where the first-term on the right-hand side of Eq. (20) is the average expected short rate over the current and n - 1 subsequent periods.  $TP_t^{(n)}$  is the term premium and can be interpreted as the additional compensation that investors require for investing in a long-term bond rather than rolling over a series of investments in short-term bonds.

## 2.5 Real time estimation and frequency mismatch

The main goal for this paper is to provide a tool that enables us to interpret the yield curve movements in the real time. To do this, we follow ACM and aggregate yields at weekly frequency by selecting end-of-week values and extract the principal components from these weekly yields. We continue to compute log excess holding period return at weekly frequency to obtain estimates of the parameters of the model as outlined in Section 2.3. We finally estimate daily yield factors by applying the weights from the weekly principal components to the daily yields and construct the model-implied yields and term premiums as described in Section 2.4 using the daily yield factors.

In addition, the use of survey information adds an additional layer of complexity to our analysis since the frequency of these data is much lower (see Section 3). We address this issue in the maximum likelihood estimation. First, rewrite Eq. (13) as follows

$$\underbrace{\begin{bmatrix} X_{t+1} \\ r_t \\ E_t[r_{t+h}] \end{bmatrix}}_{Y_t} = \underbrace{\begin{bmatrix} \mu & \Phi \\ \delta_0 & \delta_1 \\ \delta_0 & \delta_1^1 \Phi^h \end{bmatrix}}_{\beta} \begin{bmatrix} 1 \\ X_t \end{bmatrix} + v_{t+1},$$

and formulate the following maximization problem:

$$\text{Max } f(y^T | \beta). \quad (21)$$

The log-likelihood function is as follows:

$$f(y^T | \beta) = \sum_{t=1}^T \log f(y_t | x_t, \beta) = -\frac{T}{2} \log \det(2\pi R_{\beta}) - 0.5 \sum_{t=1}^T (y_t - \beta x_t)' I_s R_{\beta}^{-1} (y_t - \beta x_t) \quad (22)$$

where  $I_s$  is an indicator vector that take value 1 in the last positions if survey information is available and zero otherwise. By doing that, if survey information is not available for that week, Eq. (13) transforms in a combination of Eqs. (1) and (4).

### 3 Data

We use the euro area overnight index swap (OIS) yields, which is considered as the risk-free yield curve in the euro area. Our sample spans from 15/08/2005 up to 20/07/2023 on daily basis and uses the EONIA as the underlying contract up to 26/09/2019 and the €STER from that date onwards.

As pricing factors we use the three principal components extracted from the end-of-week OIS yields for maturities of 9-month, 12-month, 15-month, 18-month, 21-month, 2-years, 3-years, ...,10-years. These three factors are commonly used in the literature due to their direct relation with the level, slope and curvature of the yield curve.

Similar to ACM, we use monthly excess returns for  $n=6, 7, \dots, 12, 15, \dots, 24, 36, \dots, 120$  months, giving a cross section of monthly excess returns for  $N=19$  maturities. We use as risk-free rate the OIS 1-month for computing the excess returns, as defined in Eq. (6).

Finally, we employ two different data sources for survey information: Consensus Economics Forecasts (CEF) and ECB Survey of Monetary Analyst (SMA). CEF provides information on quarterly basis since 2016Q4 on the future path of the Euribor 3-month. In addition, we use the SMA, available every 6 weeks since May 2021 which provides forecasts for the €STER short rate and various horizons. For the CEF we use the 3, 12 and 24-month horizons whereas for the SMA we use the short rate expectations at the 4, 10, 16 and 22-month horizon. We pick these horizons for the SMA forecasts as these are consistently updated every six weeks whereas other horizons forecasts are more infrequent.

## 4 Empirical Results

### 4.1 Model Fit and Term Premia Estimation

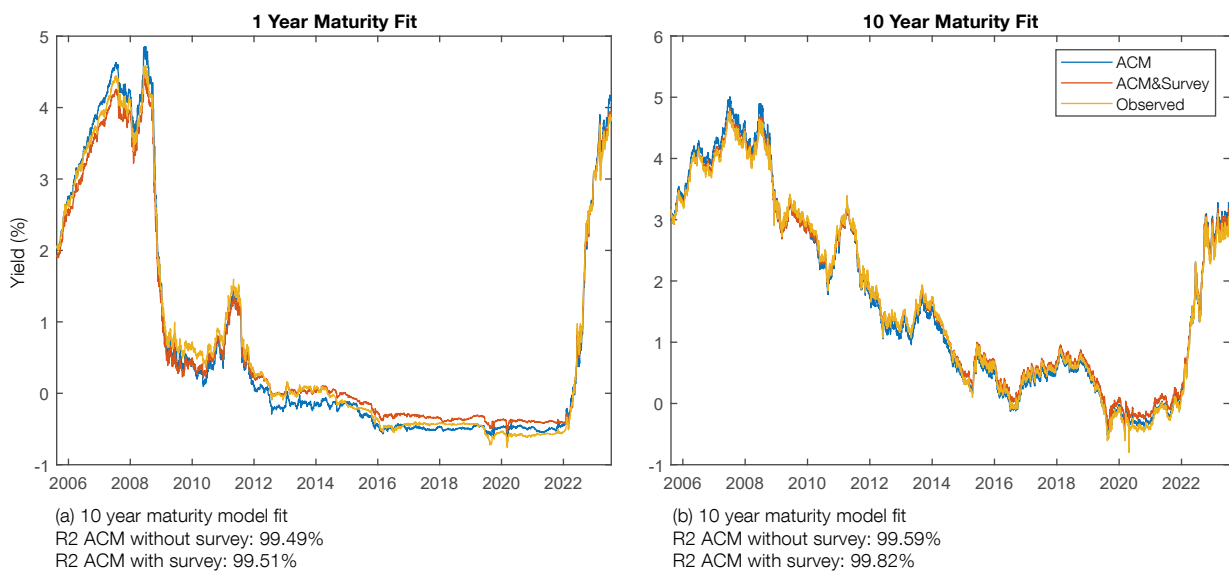
To ensure comparability, we estimate two versions of the affine term structure model: one that incorporates data from survey expectations and one that uses the ACM model without survey expectations. We analyse both models against the 10-year and 1-year yields to assess their fit.

Chart 1 shows that including survey expectations in the ACM model slightly improves the fit, particularly at longer maturities. At the 1-year maturity, both models have a similarly good fit, with the largest discrepancies occurring during the negative interest rate period. At the 10-year maturity, both models present a very good fit but again, the model with survey information performs slightly better. For example, in Figure 1, we see that while the fit for the models without survey and with survey for the 1-year rate are of 99.49% and 99.51% respectively, if we look at the low interest rate period from 2012 to end of 2021, the fit is 89.5% compared to the 96.4% of the model with surveys. However, the key difference between the two models lies in how they decompose rates into the term premium and short rate expectations component from Eq. (20). Since the term premium is given by the difference between the model rate at a given maturity and the expected return obtained from rolling over an investment in short term rates up until that given maturity, expectations of the short term rate play a key role.

Chart 2 demonstrates that incorporating expectations on short term rates at various horizons mainly influences the decomposition of the yield curve. Differences between the

Chart 1

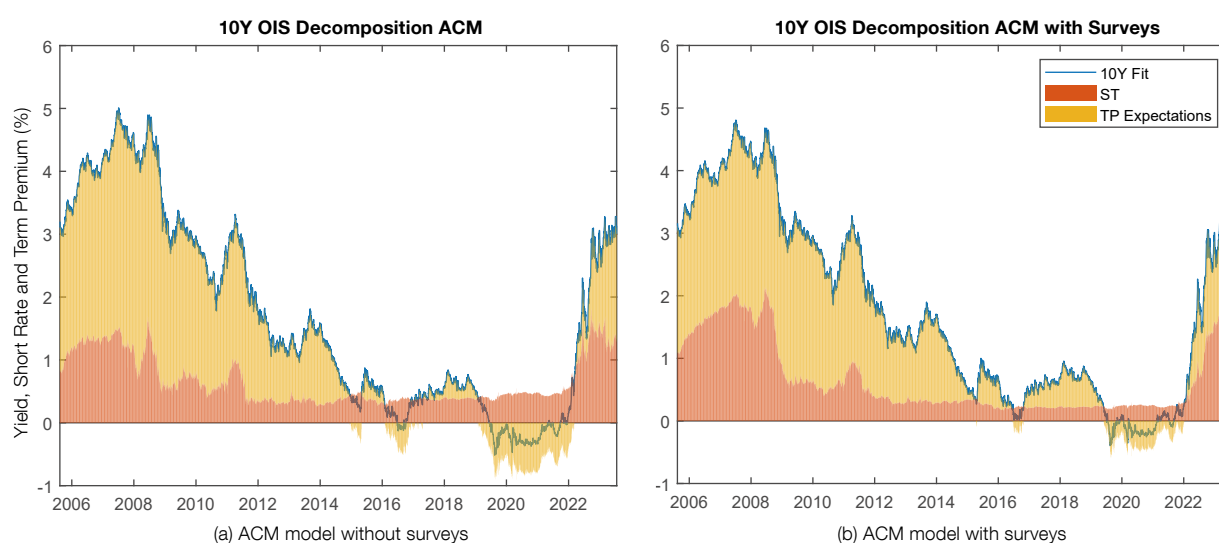
#### MODEL FIT AGAINST OBSERVED YIELDS



SOURCE: Banco de España.

Chart 2

## 10 YEAR YIELD DECOMPOSITIONS INTO TERM PREMIUM AND SHORT TERM RATES



SOURCE: Banco de España.

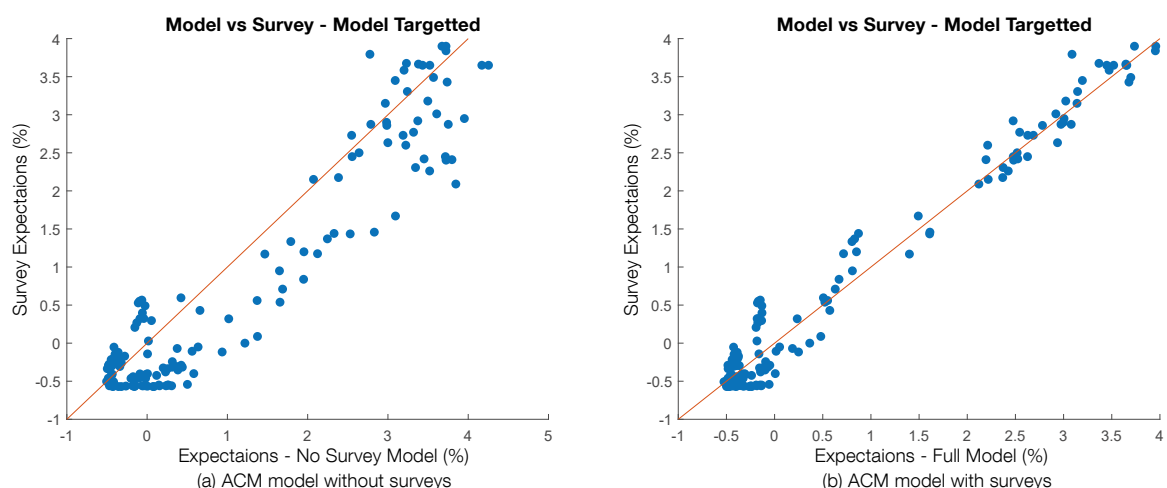
two models vary over time, with more pronounced disparities during periods of significant interest rate increases (e.g., 2005-2008 and 2022-2023). Before the global financial crisis, large differences emerge between the alternative models, being the short term expectations of the ACM model with survey information on average 0.45 percentage points higher. During the sovereign debt crisis, both models converge and there are minimal discrepancies between decompositions. From 2016 to 2021, a period characterized by negative interest rates, the gap between the two models widens again, with the size of the short term expectations of the ACM model with survey information 0.2 percentage points smaller. Since the recent ECB rate hikes, the short term expectations of the ACM model with survey information exhibit a steeper slope. Specifically, during 2023, the short rate expectations of the ACM model with survey information are, on average, 0.3 percentage points larger. The observed differences between the two models, particularly during periods of significant interest rate hikes, may be attributed to the well-known limitations of systems like Eq. (1) (Kim and Orphanides, 2012) when additional information is not provided to the model. More precisely, the ACM model displays a quicker convergence of the short-rate path to the asymptotic value, resulting in an underestimation of the short-term interest rate implied by the model and an overestimation of the term premium.

### 4.2 Comparing model short term interest rate expectations

Next, we compare how the estimated short term interest rate expectations align with survey expectations. In Chart 3 we plot expectations for the short term rate produced by both models against those coming from the surveys. That is, for every date for which we have a survey expectation, we produce model estimates from the same period to match the horizon of that survey estimate. Given that the model with survey expectations is targeted to

Chart 3

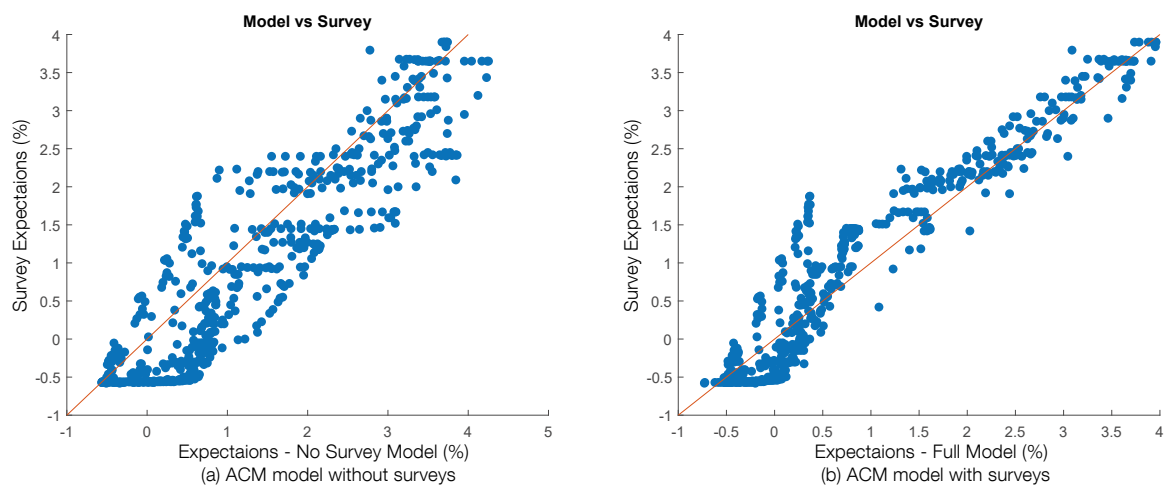
**PLOTS OF MODEL EXPECTED SHORT TERM RATES AGAINST TARGETED SURVEY EXPECTATIONS**



SOURCE: Banco de España.

Chart 4

**PLOTS OF MODEL EXPECTED SHORT TERM RATES AGAINST ALL CEF AND SMA SURVEY EXPECTATIONS**



SOURCE: Banco de España.

minimize differences with respect to the surveys, we should expect that our model at least is aligned with the targeted horizons.

In the model that incorporates survey expectations, we estimate the model to fit the CEF expectations for short rates at the 3, 12 and 24-month horizons, as well as the SMA short rate expectations at the 4, 10, 16 and 22-month horizons. Unsurprisingly, the model with survey expectations (Figure 3b) exhibits a much better fit, with an R2 of 97% while the standard ACM model has an R2 of 91% with respect to the 45-degree line.

However, it is also of interest to check whether our model estimates are also aligned with survey expectations that are not specifically targeted by our model. In Chart 4, we do a



similar exercise as in Figure 3, but with all available survey horizons from the CEF and SMA, that is, including survey expectations not directly targeted by our model. We observe the same pattern when comparing the model-generated expectations with all available survey expectations from the CEF and SMA forecasts, spanning 50 horizons from 1 week to 5 years. As shown in Chart 4, the model with survey expectations still manages to fit the survey expectations that does not explicitly target during the estimation process. While the standard ACM model has an R2 of 78%, the model with survey expectations achieves a fit of 85% with respect to the 45-degree line. It is worth noting that although surveys cover horizons up to 10 years, the survey expectations for 5 to 10 years are very stable. This is an important result as trying to fit a model to too many horizons would result in unreliable estimates, this way we can show that a more parsimonious model is still able to match survey expectations well.

We emphasize that this result is valuable if the objective is not only to extract term premia but also to obtain real-time estimates of expected future short term rates that align with survey expectations, as these surveys are released either every 6 weeks (SMA) or quarterly (CEF).

## 5 Additional applications

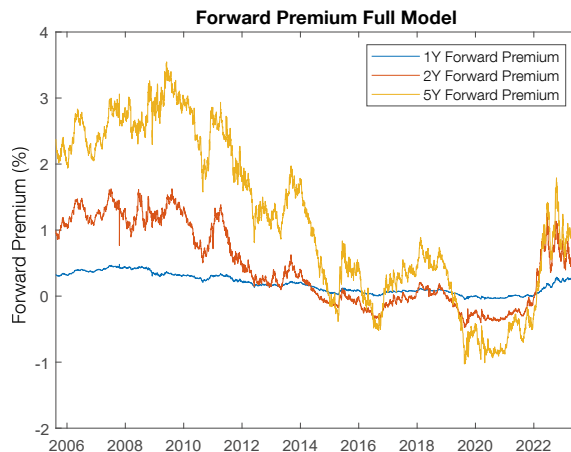
In addition to the primary application of decomposing rates into term premia and short term components and obtaining real-time expectations of the short rate, this model can also be used to produce forward curves and compare them to short term rate expectations. While instantaneous forward rates are commonly used by market observers as a proxy for the expected short rate at multiple horizons, several empirical studies reject the expectations hypothesis which implies this equality (see for instance Cochrane and Piazzesi, 2005). Instead, forward rates carry a risk premium that can be positive or negative, and this risk premium would be the difference between the forward rate and the expected rate.

Below we plot the forward premium at the 1, 2 and 5 year horizons, that is the difference in the instantaneous forward rate and the expected short rate generated by our model with survey expectations at these horizons. These estimates are consistent with what we would expect given recent monetary policy developments.

From 2008 to 2016, we see a decrease in forward premia consistent with loosening monetary policy and we even observe negative premia between 2016 until the beginning of 2022. We can especially observe a significant drop in the 5 year forward premium around the time the ECB conducted its bond buying programs. Since 2022, due to increasing inflation rates and the tightening of monetary policy, we observe a recent rise in these forward premia, especially at the longer horizons. This can be partly driven by an increase in uncertainty around the evolution of future interest rates.

Chart 5

### MODEL GENERATED FORWARD PREMIA FOR 1, 2 AND 5 YEAR HORIZONS



SOURCE: Banco de España.

## 6 Conclusion

This paper presents an estimation of an affine term structure model for the overnight index swap yield curve that incorporates survey expectations in the short rate from the CEF and SMA surveys. We follow the approach of Malik and Meldrum (2016) by incorporating survey expectations into the Adrian et al. (2013) affine term structure model. We find that adding survey expectations to the estimation reduces the underestimation of the short term expectations during periods of significant increases of interest rates, which is in line with Kim and Orphanides (2012).

We view this model as a valuable tool with several policy applications, including providing real time estimates of expected short term rates that are anchored by survey expectations, as well as estimates for risk premia along the yield curve.

## References

- Adrian, T., R. K. Crump and E. Moench. (2013). «Pricing the term structure with linear regressions». *Journal of Financial Economics*, 110(1), pp. 110-138. <https://doi.org/10.1016/j.jfineco.2013.04.009>
- Cochrane, J. H., and M. Piazzesi. (2005). «Bond risk premia». *American Economic Review*, 95(1), pp. 138-160. <https://doi.org/10.1257/0002828053828581>
- Dai, Q., and K. J. Singleton. (2002). «Expectation puzzles, time-varying risk premia, and affine models of the term structure». *Journal of financial Economics*, 63(3), pp. 415-441. [https://doi.org/10.1016/S0304-405X\(02\)00067-3](https://doi.org/10.1016/S0304-405X(02)00067-3)
- Duffee, G. (2002). «Term premia and interest rate forecasts in affine models». *The Journal of Finance*, 57(1), pp. 405-443. <https://doi.org/10.1111/1540-6261.00426>
- Dybvig, P. H., and S. A. Ross. (1987). «Arbitrage». In J. Eatwell, M. Milgate and P. Newman (eds.), *The New Palgrave: A Dictionary of Economics*. Palgrave Macmillan, pp.100-106. [https://doi.org/10.1057/978-1-349-95121-5\\_449-1](https://doi.org/10.1057/978-1-349-95121-5_449-1)
- Kim, D. H., and A. Orphanides. (2012). «Term structure estimation with survey data on interest rate forecasts». *Journal of Financial and Quantitative Analysis*, 47(1), pp. 241-272. <https://doi.org/10.1017/S0022109011000627>
- Malik, S., and A. Meldrum. (2016). «Evaluating the robustness of UK term structure decompositions using linear regression methods». *Journal of Banking & Finance*, 67, pp. 85-102. <https://doi.org/10.1016/j.jbankfin.2016.02.006>
- Piazzesi, M. (2005). «Bond yields and the Federal Reserve». *Journal of Political Economy*, 113(2), pp. 311-344. <https://doi.org/10.1086/427466>

## BANCO DE ESPAÑA PUBLICATIONS

### OCCASIONAL PAPERS

- 2210 PABLO BURRIEL, IVÁN KATARYNIUK and JAVIER J. PÉREZ: Computing the EU's SURE interest savings using an extended debt sustainability assessment tool.
- 2211 LAURA ÁLVAREZ, ALBERTO FUERTES, LUIS MOLINA and EMILIO MUÑOZ DE LA PEÑA: Fund raising in the international capital markets in 2021. (There is a Spanish version of this edition with the same number).
- 2212 CARLOS SANZ: El peso del sector público en la economía: resumen de la literatura y aplicación al caso español.
- 2213 LEONOR DORMIDO, ISABEL GARRIDO, PILAR L'HOTELLERIE-FALLOIS and JAVIER SANTILLÁN: Climate change and sustainable growth: international initiatives and European policies. (There is a Spanish version of this edition with the same number).
- 2214 CARMEN SÁNCHEZ and JARA QUINTANERO: Las empresas *fintech*: panorama, retos e iniciativas.
- 2215 MARÍA ALONSO, EDUARDO GUTIÉRREZ, ENRIQUE MORAL-BENITO, DIANA POSADA, PATROCINIO TELLO-CASAS and CARLOS TRUCHARTE: In-person access to banking services in Spain: a comparison with other countries and other types of services. (There is a Spanish version of this edition with the same number).
- 2216 BEATRIZ GONZÁLEZ, ENRIQUE MORAL-BENITO and ISABEL SOLER: Schumpeter Meets Goldilocks: the Scarring Effects of Firm Destruction.
- 2217 MARIO ALLOZA, JÚLIA BRUNET, VÍCTOR FORTE-CAMPOS, ENRIQUE MORAL-BENITO and JAVIER J. PÉREZ: Government spending in Spain from a European perspective. (There is a Spanish version of this edition with the same number).
- 2218 PABLO AGUILAR, BEATRIZ GONZÁLEZ and SAMUEL HURTADO: Carbon tax sectoral (CATS) model: a sectoral model for energy transition stress test scenarios.
- 2219 ALEJANDRO MUÑOZ-JULVE and ROBERTO RAMOS: Estimation of the impact of changes in the period used to calculate the regulatory base on new retirement pension amounts. (There is a Spanish version of this edition with the same number).
- 2220 LUIS ÁNGEL MAZA: An estimation of the carbon footprint in Spanish credit institutions' business lending portfolio. (There is a Spanish version of this edition with the same number).
- 2221 SUSANA MORENO SÁNCHEZ: The EU-UK relationship: regulatory divergence and the level playing field.
- 2222 ANDRÉS ALONSO-ROBISCO and JOSÉ MANUEL CARBÓ: Inteligencia artificial y finanzas: una alianza estratégica.
- 2223 LUIS FERNÁNDEZ LAFUERZA, MATÍAS LAMAS, JAVIER MENCÍA, IRENE PABLOS and RAQUEL VEGAS: Analysis of the usability of capital buffers during the crisis precipitated by COVID-19. (There is a Spanish version of this edition with the same number).
- 2224 SONSOLES GALLEGO, ISABEL GARRIDO and IGNACIO HERNANDO: IMF precautionary facilities and their use in Latin America. (There is a Spanish version of this edition with the same number).
- 2301 LAURA HOSPIDO, CARLOS SANZ and ERNESTO VILLANUEVA: Air pollution: a review of its economic effects and policies to mitigate them.
- 2302 IRENE MONASTEROLO, MARÍA J. NIETO and EDO SCHETS: The good, the bad and the hot house world: conceptual underpinnings of the NGFS scenarios and suggestions for improvement.
- 2303 ADRIÁN LÓPEZ GONZÁLEZ: Inteligencia artificial aplicada al control de calidad en la producción de billetes.
- 2304 BELÉN AROCA MOYA: Conceptos, fundamentos y herramientas de neurociencia, y su aplicación al billete.
- 2305 MARÍA ALONSO, EDUARDO GUTIÉRREZ, ENRIQUE MORAL-BENITO, DIANA POSADA and PATROCINIO TELLO-CASAS: Un repaso de las diversas iniciativas desplegadas a nivel nacional e internacional para hacer frente a los riesgos de exclusión financiera.
- 2306 JOSÉ LUIS ROMERO UGARTE, ABEL SÁNCHEZ MARTÍN and CARLOS MARTÍN RODRÍGUEZ: Alternatives to the evolution of wholesale banking operations in the Eurosystem. (There is a Spanish version of this edition with the same number).
- 2307 HENRIQUE S. BASSO, OURANIA DIMAKOU and MYROSLAV PIDKUYKO: How inflation varies across Spanish households.
- 2308 LAURA CRESPO, NAJIBA EL AMRANI, CARLOS GENTO and ERNESTO VILLANUEVA: Heterogeneidad en el uso de los medios de pago y la banca *online*: un análisis a partir de la Encuesta Financiera de las Familias (2002-2020).
- 2309 HENRIQUE S. BASSO, OURANIA DIMAKOU and MYROSLAV PIDKUYKO: How consumption carbon emission intensity varies across Spanish households.
- 2310 IVÁN AUCIELLO-ESTÉVEZ, JOSEP PIJOAN-MAS, PAU ROLDAN-BLANCO and FEDERICO TAGLIATI: Dual labor markets in Spain: a firm-side perspective.
- 2311 CARLOS PÉREZ MONTES, JORGE E. GALÁN, MARÍA BRU, JULIO GÁLVEZ, ALBERTO GARCÍA, CARLOS GONZÁLEZ, SAMUEL HURTADO, NADIA LAVÍN, EDUARDO PÉREZ ASENJO and IRENE ROIBÁS: Systemic analysis framework for the impact of economic and financial risks (There is a Spanish version of this edition with the same number).

- 2312 SERGIO MAYORDOMO and IRENE ROIBÁS: The pass-through of market interest rates to bank interest rates. (There is a Spanish version of this edition with the same number).
- 2313 CARLOS PÉREZ MONTES, ALEJANDRO FERRER, LAURA ÁLVAREZ ROMÁN, HENRIQUE BASSO, BEATRIZ GONZÁLEZ LÓPEZ, GABRIEL JIMÉNEZ, PEDRO JAVIER MARTÍNEZ-VALERO, SERGIO MAYORDOMO, ÁLVARO MENÉNDEZ PUJADAS, LOLA MORALES, MYROSLAV PIDKUYKO and ÁNGEL VALENTÍN: Individual and sectoral analysis framework for the impact of economic and financial risks. (There is a Spanish version of this edition with the same number).
- 2314 PANA ALVES, CARMEN BROTO, MARÍA GIL and MATÍAS LAMAS: Risk and vulnerability indicators for the Spanish housing market.
- 2215 ANDRÉS AZQUETA-GAVALDÓN, MARINA DIAKONOVA, CORINNA GHIRELLI and JAVIER J. PÉREZ: Sources of economic policy uncertainty in the euro area: a ready-to-use database.
- 2316 FERNANDO GARCÍA MARTÍNEZ and MATÍAS PACCE: The Spanish electricity sector in the face of rising gas prices and the Government measures rolled out in response. (There is a Spanish version of this edition with the same number).
- 2317 ROBERTO BLANCO and SERGIO MAYORDOMO: Evidence on the impact of the public guarantee and direct aid schemes on Spanish firms during the covid-19 crisis. (There is a Spanish version of this edition with the same number).
- 2318 ISABEL GARRIDO and IRUNE SOLERA: Has the 2021 general SDR allocation been useful? For what and for whom?
- 2319 ROBERTO BLANCO, ELENA FERNÁNDEZ, MIGUEL GARCÍA-POSADA and SERGIO MAYORDOMO: An estimation of the default probabilities of Spanish non-financial corporations and their application to evaluate public policies.
- 2320 BANCO DE ESPAÑA: In-person access to banking services in Spain: 2023 Monitoring Report. (There is a Spanish version of this edition with the same number).
- 2321 EDUARDO AGUILAR GARCÍA, MARIO ALLOZA FRUTOS, TAMARA DE LA MATA, ENRIQUE MORAL-BENITO, IÑIGO PORTILLO PAMPIN and DAVID SARASA FLORES: Una primera caracterización de las empresas receptoras de fondos NGEU en España.
- 2401 ALEJANDRO MORALES, MANUEL ORTEGA, JOAQUÍN RIVERO and SUSANA SALA: How to identify all companies worldwide. Experience with the legal entity identifier (LEI). (There is a Spanish version of this edition with the same number).
- 2402 XAVIER SERRA and SONSOLES GALLEGO: An initial stocktake of the IMF's resilience and sustainability trust as a channel for using special drawing rights. (There is a Spanish version of this edition with the same number).
- 2403 PABLO HERNÁNDEZ DE COS: The role of macroprudential policy in the stabilisation of macro-financial fluctuations. Conference on Financial Stability/Banco de Portugal, Lisbon (Portugal), 2 October 2023.
- 2404 MORTEZA GHOMI, SAMUEL HURTADO and JOSÉ MANUEL MONTERO: Analysis of recent inflation dynamics in Spain. An approach based on the Blanchard and Bernanke (2023) model. (There is a Spanish version of this edition with the same number).
- 2405 PILUCA ALVARGONZÁLEZ, MARINA ASENSIO, CRISTINA BARCELÓ, OLYMPIA BOVER, LUCÍA COBREROS, LAURA CRESPO, NAJIBA EL AMRANI, SANDRA GARCÍA-URIBE, CARLOS GENTO, MARINA GÓMEZ, PALOMA URCELAY, ERNESTO VILLANUEVA and ELENA VOZMEDIANO: The Spanish Survey of Household Finances (EFF): description and methods of the 2020 wave.
- 2406 ANA GÓMEZ LOSCOS, MIGUEL ÁNGEL GONZÁLEZ SIMÓN and MATÍAS JOSÉ PACCE: Short-term real-time forecasting model for Spanish GDP (Spain-STING): new specification and reassessment of its predictive power. (There is a Spanish version of this edition with the same number).
- 2407 OLYMPIA BOVER, LAURA CRESPO, SANDRA GARCÍA-URIBE, MARINA GÓMEZ-GARCÍA, PALOMA URCELAY and PILAR VELILLA: Micro and macro data on household wealth, income and expenditure: comparing the Spanish Survey of Household Finances (EFF) to other statistical sources.
- 2408 ÁNGEL ESTRADA and CARLOS PÉREZ MONTES: Un análisis de la evolución de la actividad bancaria en España tras el establecimiento del gravamen temporal de la ley 38/2022.
- 2409 PABLO A. AGUILAR, MARIO ALLOZA, JAMES COSTAIN, SAMUEL HURTADO and JAIME MARTÍNEZ-MARTÍN: The effect of the European Central Bank's asset purchase programmes on Spain's public finances. (There is a Spanish version of this edition with the same number).
- 2410 RICARDO BARAHONA and MARÍA RODRÍGUEZ-MORENO: Estimating the OIS term premium with analyst expectation surveys.