

MEASURING RETAIL TRADE USING CARD TRANSACTIONAL DATA

2019

Diego Bodas, Juan R. García López,
Juan Murillo Arias, Matías J. Pacce,
Tomasa Rodrigo López, Juan de Dios
Romero Palop, Pep Ruiz de Aguirre,
Camilo A. Ulloa and Heribert Valero Lapaz

**Documentos de Trabajo
N.º 1921**

BANCO DE ESPAÑA
Eurosistema



MEASURING RETAIL TRADE USING CARD TRANSACTIONAL DATA

MEASURING RETAIL TRADE USING CARD TRANSACTIONAL DATA ^(*)

Diego Bodas

MAPFRE

**Juan R. García López, Tomasa Rodrigo López, Pep Ruiz de Aguirre
and Camilo A. Ulloa**

BBVA RESEARCH

**Juan Murillo Arias, Juan de Dios Romero Palop
and Heribert Valero Lapaz**

BBVA DATA & ANALYTICS

Matías J. Pacce

BANCO DE ESPAÑA

(*) We thank Gonzalo de Cadenas-Santiago for his contribution in the first stages of the project. We are also grateful to Miguel Cardoso and Álvaro Ortiz; to seminar participants at BBVA Research, Bank of Spain, the 29th (EC)² Conference (2018), SAE (2018) and ESCoE (2019); and to an anonymous referee, for their helpful comments and suggestion, which greatly improved the quality of this paper. The data, anonymized and aggregated, was processed and treated exclusively by BBVA, nobody outside the company got access to this information. The opinions expressed in this paper are those of the authors and do not necessarily reflect the views of the Banco de España or the European System of Central Banks (ESCB).

The Working Paper Series seeks to disseminate original research in economics and finance. All papers have been anonymously refereed. By publishing these papers, the Banco de España aims to contribute to economic analysis and, in particular, to knowledge of the Spanish economy and its international environment.

The opinions and analyses in the Working Paper Series are the responsibility of the authors and, therefore, do not necessarily coincide with those of the Banco de España or the Eurosystem.

The Banco de España disseminates its main reports and most of its publications via the Internet at the following website: <http://www.bde.es>.

Reproduction for educational and non-commercial purposes is permitted provided that the source is acknowledged.

© BANCO DE ESPAÑA, Madrid, 2019

ISSN: 1579-8666 (on line)

Abstract

In this paper we present a high-dimensionality Retail Trade Index (RTI) constructed to nowcast the retail trade sector economic performance in Spain, using Big Data sources and techniques. The data are the footprints of BBVA clients from their credit or debit card transactions at Spanish point of sale (PoS) terminals. The resulting indexes have been found to be robust when compared with the Spanish RTI, regional RTI (Spain's autonomous regions), and RTI by retailer type (distribution classes) published by the National Statistics Institute (INE). We also went one step further, computing the monthly indexes for the provinces and sectors of activity and the daily general index, by obtaining timely, detailed information on retail sales. Finally, we analyzed the high-frequency consumption dynamics using BBVA retailer behavior and a structural time series model.

Keywords: retail sales, big data, electronic payments, consumption, structural time series model.

JEL classification: C32, C55, C81, E21.

Resumen

En este trabajo se presenta un Índice de Comercio Minorista (ICM) de alta dimensionalidad construido para España, estimado a partir del uso de datos masivos. La información utilizada se corresponde con la que surge de las transacciones con tarjetas de crédito y de débito de los clientes de BBVA en terminales de punto de venta (TPV) españoles. Los índices obtenidos son robustos cuando se comparan con los que publica el Instituto Nacional de Estadística (INE), tanto para el conjunto de España como para las distintas regiones y los diferentes canales de distribución. Dando un paso más, se calculan los índices mensuales por provincias y por sectores (información no publicada por el INE) y se construye un índice general diario. A partir de este último índice, se analizan además las pautas de consumo en alta frecuencia a través de un modelo estructural de series temporales.

Palabras clave: ventas minoristas, datos masivos, pagos electrónicos, consumo, modelo estructural de series temporales.

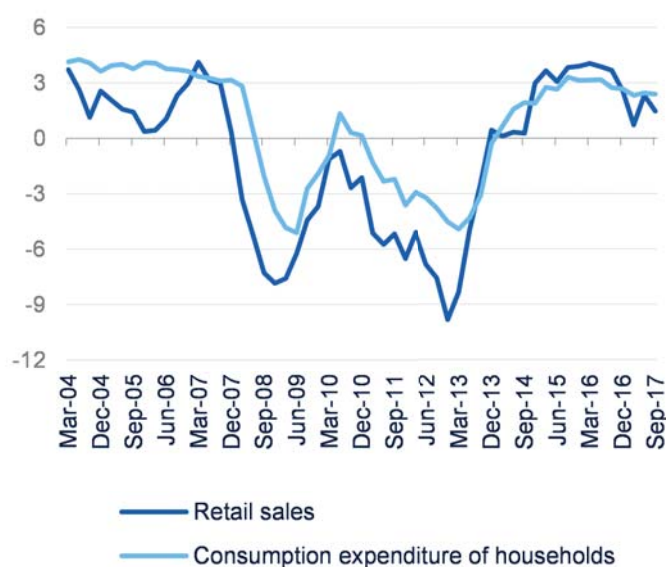
Códigos JEL: C32, C55, C81, E21.

1 Introduction

Recent improvements in data storage, management, and processing have led to an exponential increase in the amount and quality of the information available for economic analysis, both from an individual and a macroeconomic perspective. In particular, the latest developments in Big Data technologies permit a ‘quasi-real-time’ analysis of the information emerging from citizens, governments, and firms in all interactions that generate a digital footprint. New data sources, such as those originated from social networks and search engines, have been proven to help the forecasting of economic variables, such as employment, consumption, and tourism flows (see McLaren and Shanbhogue, 2011; Choi and Varian, 2012; Camacho and Pacce, 2018; among many others). More recently, Cavallo and Rigobon (2016) and Cavallo (2018) have shown that the prices of goods and services sold online can be used to estimate high-frequency price indices. The authors used web scraping tools for the data compilation and proposed a common methodology for generating a price index for a large sample of countries, to allow for the international comparability of prices. We wish to contribute to this line of research by proposing an alternative method for measuring the business evolution of the retail trade sector based on data from credit and debit card transactions.

The retail trade index (RTI) has traditionally been measured by National Statistics Institutes (NSIs) using surveys conducted with a limited sample of retailers, resulting in the collection of relevant information based on data from the supply side. In this paper, we propose a different focus and show that, as could be expected, data emerging from the demand side can also offer similar measures to the official statistics. In particular, we replicated the evolution of the Spanish RTI released by the Spanish National Institute of Statistics (INE), using information obtained from retail transactions by credit and debit card holders of BBVA (one of the largest banks in Spain). The possibility of studying aggregate economic patterns from individual economic transactions using card transaction data was demonstrated by Sobolevsky et al. (2015), who were able to obtain regional socioeconomic signals in Spain using this type of information. Also, electronic payment data has already been shown to be helpful in forecasting the evolution of economic aggre-

Figure 1: Spain: Retail Sales vs. Household Consumption Expenditure (% YoY)



Source: BBVA based on INE.

gates (see Galbraith and Tkacz, 2015; Duarte et al., 2017; Gil et al., 2018 or Aprigliano et al., 2019). Nonetheless, to the best of our knowledge, this is the first time that the evolution of an official index published by a NSI has been replicated using information from credit and debit card transactions.

Having accurate estimates of the evolution of retail trade sector activity is of great importance given that this is a key indicator of the current economic situation. In general, its dynamic drives the evolution of aggregate consumption (see Figure 1), which in turn represents a high proportion of the gross domestic product (GDP). In this sense, it is not surprising that most short-term macroeconomic forecasting models used by Central Banks or private agencies around the world include the aggregate RTI as an important input. One clear example comes from Stock and Watson (1989, 1991), who included the RTI as one of the four economic indicators needed to construct a coincident indicator index for the evolution of the US economic activity. Besides this important feature, the RTI is also crucial as an indicator for studying the development of the retail sector itself, and the possible disaggregation published by the NSIs (by sectors or regions) is key for a detailed analysis.

The results of this paper show that developments in Big Data analysis have the potential to replicate the evolution of relevant macroeconomic indicators. In particular, we reproduce the dynamics not only of the aggregate Spanish RTI but also the regional RTI (of the Spanish autonomous regions) and the one by retailer type (distribution classes). A number of benefits emerge from our proposed methodology, which are related to the ‘quasi-real-time’ availability of the data, the higher frequency with which the index can be computed, and the greater geographical and sectoral disaggregation. In this sense, we are able to construct a RTI for the 50 Spanish provinces, a geographical detail that is not published by the INE, and even a daily aggregate Spanish RTI. In addition, based on this daily index, we are able to analyze consumption dynamics by using a daily structural time series model like the one proposed by Harvey et al. (1997). We find regular significant patterns that displayed strong intra-weekly, intra-monthly and intra-yearly seasonalities, which are also affected by holiday effects.

The remainder of this paper is organized as follows: Section 2 describes the methodology followed to replicate the Spanish RTI and the data used, while Section 3 shows how alternative indices are a good way to replicate the dynamics of the official ones. Section 4 describes the daily model used to study regular consumption pattern and Section 5 presents the conclusions.

2 An Alternative Way to Compute Retail Trade Indexes

NSIs around the world use the same pillars to estimate the evolution of business in the retail trade sector, which is in general summarized in the retail trade index (RTI). This index reflects the total gross sales of retailers during a fixed period of time (generally a month) and it is constructed by conducting surveys directed to a limited number of companies selected using random sampling techniques.¹ In other words, the relevant data

¹In the case of Spain, the information is obtained from a sample of 12,500 respondent units among the companies registered in the Central Companies Directory (CCD), which provides data by completing

is collected using information obtained from the supply side. Alternatively, it is possible to consider getting the same information from the demand side by using surveys asking the retailers' customers about their expenditure. Even though the latter was never a real option for statistical offices, a major breakthrough has occurred in view of recent developments in Big Data technologies. In particular, the increase in payments using credit and debit cards makes it possible to use the information recorded whenever a credit or debit card is used for a retail transaction to obtain similar measures to the ones given by the RTI, but using real data on consumption instead of data from surveys. Taking this hypothesis, we propose an alternative measure to the Spanish RTI that is based on the information obtained from retail transactions made by credit and debit card holders of the BBVA's Spanish bank.

2.1 The Data Sources

We analyze a complete set of Point of Sale (PoS) purchases or transactions performed in Spanish retail stores between 2013/01 and 2018/01 using credit and debit cards issued by BBVA.² This data includes transactions done using BBVA's credit and debit cards, both in POS that belong to BBVA and in those which belong to other banks.³

For the purposes of this paper, we focus on information⁴ relating to the amount of each transaction, the geo-localization and principal activity of each PoS,⁵ as well as the company that owns it and the exact time the transaction took place. Following the definition given by INE, retail trade here does not include expenditure on motor vehicles and motorcycles, food service, the hospitality industry, or financial services, while sales at gas stations are taken into account. In other words, retail activities refer to Section G,

a monthly questionnaire by phone, email, fax or Internet.

²Both face-to-face and online purchases have been analyzed for this project.

³We could have also rely on information on transactions done using non-BBVA's credit and debit cards in those POS that belong to BBVA. However, we decided not to include that information in order to avoid the potential bias induced by the fact that merchants whom own more than one POS prefer to pass a card through a POS that belong to the bank that issued the card (aiming to reduce the fee they should pay).

⁴The transactions database has been anonymized and aggregated before analyzing it.

⁵For each transaction, we have information about the sector of activity of any Spanish POS (independent of belonging or not to BBVA). This data is reported jointly with the amount, time and geolocalization.

category 47 of the National Classification of Economic Activities (CNAE-2009). Filtering for that specific category is possible because the dataset on card transactions includes the main activity of each PoS.

Following INE, we also group purchases into 5 distribution classes based on the following categories of retail store:

1. Gas stations.
2. Department stores: premises⁶ with $2,500m^2$ or more.
3. Large chain stores: chain stores with 25 premises or more and at least 50 employees.
4. Small chain stores: all chain stores with more than 1 premises, except those with 25 or more premises and 50 or more employees.⁷
5. Single retail stores: only one premises.

We only consider transactions below €30,000 (the maximum credit limit for BBVA Gold Cards). Values over that threshold are considered to be outliers. The sample contain approximately 1.2 million of merchants classified by BBVA in 17 categories and 75 subcategories and more than 900 million transactions by over 4 million cardholders.⁸ Columnar databases were used to deal with this huge amount of information.

2.2 Methodology

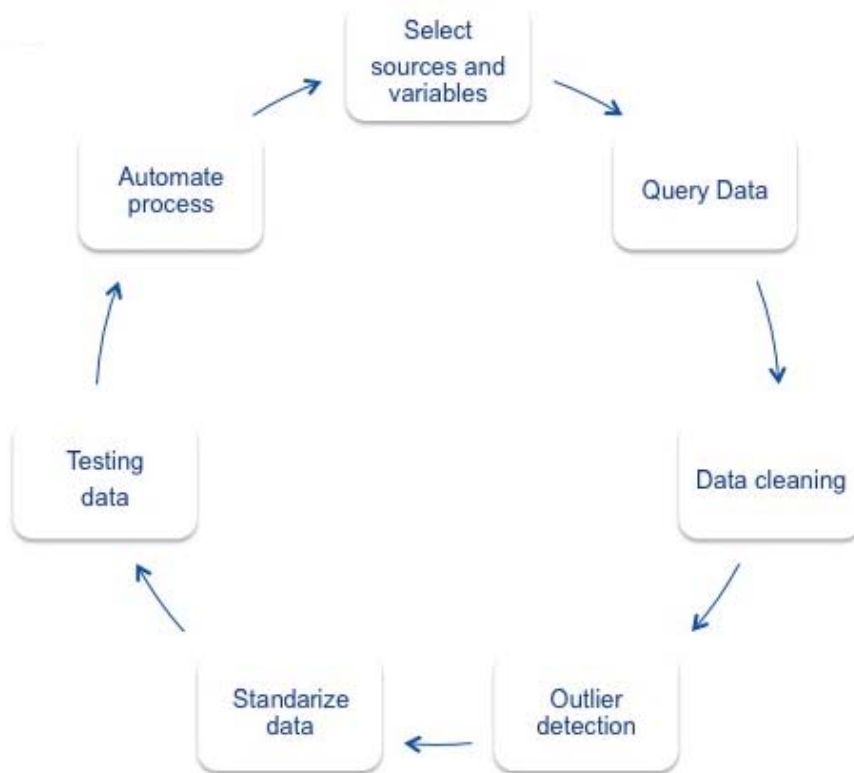
In order to build the Spanish BBVA-RTI based on card transactions it was necessary to create a data engine capable of regularly delivering the index pursued. With this aim, a number of steps were followed during the process of building the data engine (see Figure 2).

⁶According to the INE, a premises is “any structurally separate and independent building that is not dedicated exclusively to family housing, and in which economic activities dependent on a company are carried out, and in which one or more persons work for the company”.

⁷Since we do not have information on the number of employees in each company, we did not include the 50 employees’ restriction neither for the “large chain” nor in the “small chain” definition.

⁸It should be noticed these numbers refer only to transactions made at those retail stores which are included for the computation of the RTI (the ones belonging to any of the five distribution classes detailed above).

Figure 2: Data Engine Building Process.
Data extraction, cleansing, and transformation



Source: BBVA.

We started selecting data sources and useful variables to meet the goals of the project. Big data queries are not a trivial task when using columnar databases and cluster solutions,⁹ as they need to be optimized in order to avoid cluster failure or malfunction.

We obtained daily, weekly, and monthly aggregate data on the total number and the total amount of transactions. At the same time, we queried this information at different levels of granularity, getting data for the entire country, data for each of the 17 autonomous regions of Spain, and the 50 provinces.¹⁰ Ensuring data quality required the data to be cleaned and formatted (during this process, outliers were deleted).¹¹ In the final stage, the data were tested to check whether these data sources and variables were useful for the project's goals. Finally, the process was automated by implementing a code library.

⁹By definition a columnar database stores data by columns rather than by rows, which makes it suitable for analytical query processing. In particular, it boost performance since it ignores all the data that doesn't apply to a particular query getting the information just from the relevant columns.

¹⁰Spain's autonomous regions and provinces correspond, respectively, to NUTS-2 and NUTS-3 in EUROSTAT nomenclature.

¹¹As previously specified, we consider outliers as those transactions above €30,000.

Table 1: Comparison between RTI Data Sources

	Card Transaction Data (BBVA)	Survey Data (INE)
Cost per observation	Marginally Low	High
Data Frequency	Daily	Monthly
Disaggregation by activity	High	Low
Geographical disaggregation	High	Low
Real-time availability	Yes	No
Retailer sample	$\approx 1,2$ million	$\approx 12,000$
Payment methods covered	BBVA's clients credit and debit cards	All*
Possible bias of technological trends	Yes	No

* Cash, transfers, credit and debit cards, etc..

2.3 Strengths and Weakness of the BBVA-RTI

As we are proposing an alternative way of computing the Spanish RTI (which could potentially be translated to other countries), it is important to point out the advantages and disadvantages of using card transaction data rather than the classical method of estimation used by official statistical offices. The comparison is summarized in Table 1.

The first advantage of using card transaction data is related to the cost of obtaining additional observations. Even though storing huge amounts of information is not cheap, the economic scale of digital information storage means the cost of a marginal observation is close to zero, allowing for an obvious gain as compared to conducting 50 parallel regional monthly surveys (one for each INE provincial delegation) to obtain the relevant information.

A second advantage is related to the frequency of data collection, which allows for a deeper analysis of the behavior of retailers' customers than the one than can be performed when using monthly data. Section 5 shows an example of this applicability.

Thirdly, card transaction data include information on each PoS's main activity, allowing for greater economic activity disaggregation, and not only for each of the 5 groups published by INE. As an example, in Section 4, we show the median expenditure by sector at the end of 2017.

Fourthly, the geographical disaggregation that can be obtained is greater than that published by INE. In particular, with data on the geo-localization of each PoS, it is potentially possible to generate an RTI for a city or even a single postcode. In the present work, we computed the RTI at the provincial level, a disaggregation that is not available for the INE data.

It should be noticed that, potentially, the INE could also publish a higher disaggregation at the activity or geographical level. However, for the disaggregated series to be accurate, it would be needed a larger sample size –or possible a new design of the sample– which, in turn, would increase the cost of the survey.

Fifthly, INE publishes its data with a one-month delay, while card transaction data is available almost in real time. This would allow policymakers to access the latest information without any kind of delay.

Lastly, in regard to the sample, the card transaction data include almost the entire sample of companies registered in the CCD, while INE's data are based on a sample that covers only 12,500 companies.¹²

On the other hand, some disadvantages can be found when using card transaction data. Firstly, the total amount billed only refers to expenditure made using BBVA client credit and debit cards. This means that we exclude all transactions made using cash or non-BBVA cards. In respect to the use of cash, according to Esselink and Hernández (2017) Spain was, in 2016, among the euro area countries with higher rate of cash payments per day (1.7) while the share of cash in terms of value of payments at points of sale was around 68%. It should be noted, though, that the value of card payments has sustained increased since 2014, while the value of cash withdrawals has remained constant (see Alonso et al.,

¹²According to the last release of the “Structural Business Statistics” published by the INE (which corresponds to 2016) there are 486,684 companies that operate at the retail sector. We account for \approx 300,000 different tax identification codes (CIF) that amounts for 1.2 million of retailers.

2019).¹³ Concerning BBVA's debit and credit card market share in Spain, it amounted to 13.8% in 2017. Therefore, an important assumption we need to make is the sample we are using is sufficiently representative in order to achieve our objective of computing an alternative RTI. A second disadvantage when using card transaction data is related to the potential bias that technological trends could generate if they affect preferences for using credit or debit cards.

3 The Spanish Retail Trade Index

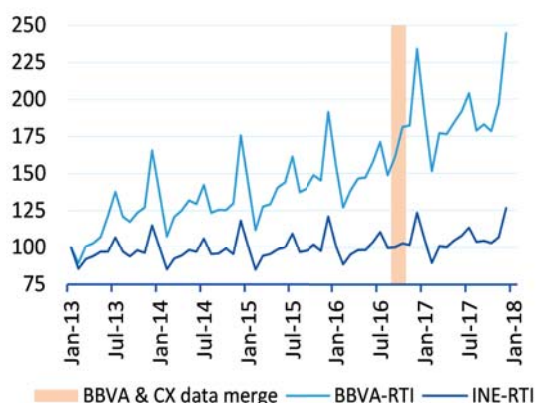
In this section, we show that information obtained from card transaction data can replicate the dynamics of the official RTI for Spain, not only for the national aggregate, but also for all five sub-divisions of the national index and for all 17 official retail trade indices published for each of the autonomous regions.

3.1 Similarities with the Official Aggregate Indices

By comparing both the official Spanish RTI and the BBVA-RTI, it is easy to see how the two are closely related. In Figure 3, we plot the monthly BBVA-RTI next to the nominal non-seasonally adjusted official RTI. As it can be seen, even though the dynamic of both indices appears to be similar, the BBVA-RTI shows a steeper trend than the official index. As previously said, this may be associated with the existence of some kind of technological trend affecting consumer behavior and the intensity of use of credit and debit cards. As an example of this pattern, in Figure 4 we plot the evolution of the BBVA-RTI's average transaction amount. As shown, the median transaction amount decreased from €45.70 in December 2013 to €39.8 in December 2018. This result, together with the upward trend in the BBVA-RTI, can be interpreted not only as the fact that people are increasingly using credit and debit cards but also that there is a higher number of lower amount transactions. Additionally, the BBVA data may be affected by the addition of

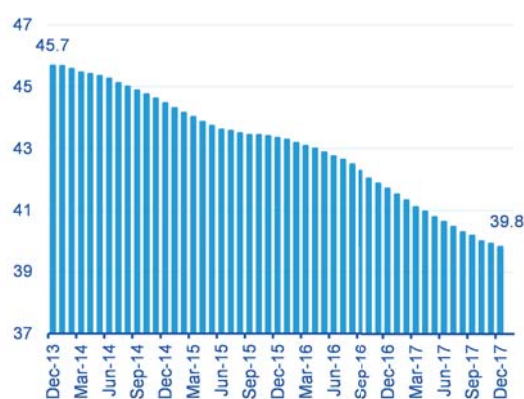
¹³Of course, different patterns could be found among the population. Using BBVA's data on debit and credit card payments, Alonso et al. (2019) also concluded that age is a clear determinant in the use of cards as a payment method compared to cash withdrawals. In particular, they found that, compared to the overall average in Spain, withdraws (in term of value of transactions) are higher for people aged 60 and over (33% more) and lower for people under the age of 30 (44% below the average).

Figure 3: Aggregate Retail Trade Indices (Jan-13 = 100)



Source: BBVA based on INE.

Figure 4: BBVA-RTI, average transaction amounts (euros, 12 months moving average)



Source: BBVA.

new clients or the loss of old ones. This is particularly relevant in the case of mergers and acquisitions, like BBVA’s absorption of UNIM and CatalunyaCaixa in the second quarter of 2013 and the last quarter of 2016,¹⁴ respectively.

Even though Figure 3 does not clearly show the official RTI as being a non-stationary series, it does become clear when the index is plotted for a larger sample period¹⁵ (see Figure A.1 in the Appendix). As both series show a non-stationary pattern, and that our main interested is regarding the signals we can extract from the data, comparing the series in terms of monthly growth rates is even more important than the previous exercise in terms of levels. In Figure 5a, we show how the similarities between the indices become stronger when expressed in standardized monthly growth rates,¹⁶ giving strong support to the BBVA-RTI as a very close approximation to the official index. This became even more evident when we analyzed the 5 distribution channels for which the INE gives retail trade indices, besides the aggregate one. In Figures 5b-5f, it is possible to see that those similarities are high enough for all 5 disaggregation, even though with some heterogeneity between them. The case of “department stores” is the one that shows most proximity between the indices, even though the coincidence is also very high for “large chain stores”.

¹⁴Our estimates indicate that the relationship between BBVA-RTI’s growth rates and the official RTI deviate by 0.47 and 0.59 standard deviations in September and October 2016 as a result of the absorption of CatalunyaCaixa. No statistically significant effects were found for national transactions after the UNIMUnnim takeover.

¹⁵The official data start in January 1995.

¹⁶We compute the first difference of natural logs from the series. Then we subtract the mean and divide by the standard deviation.

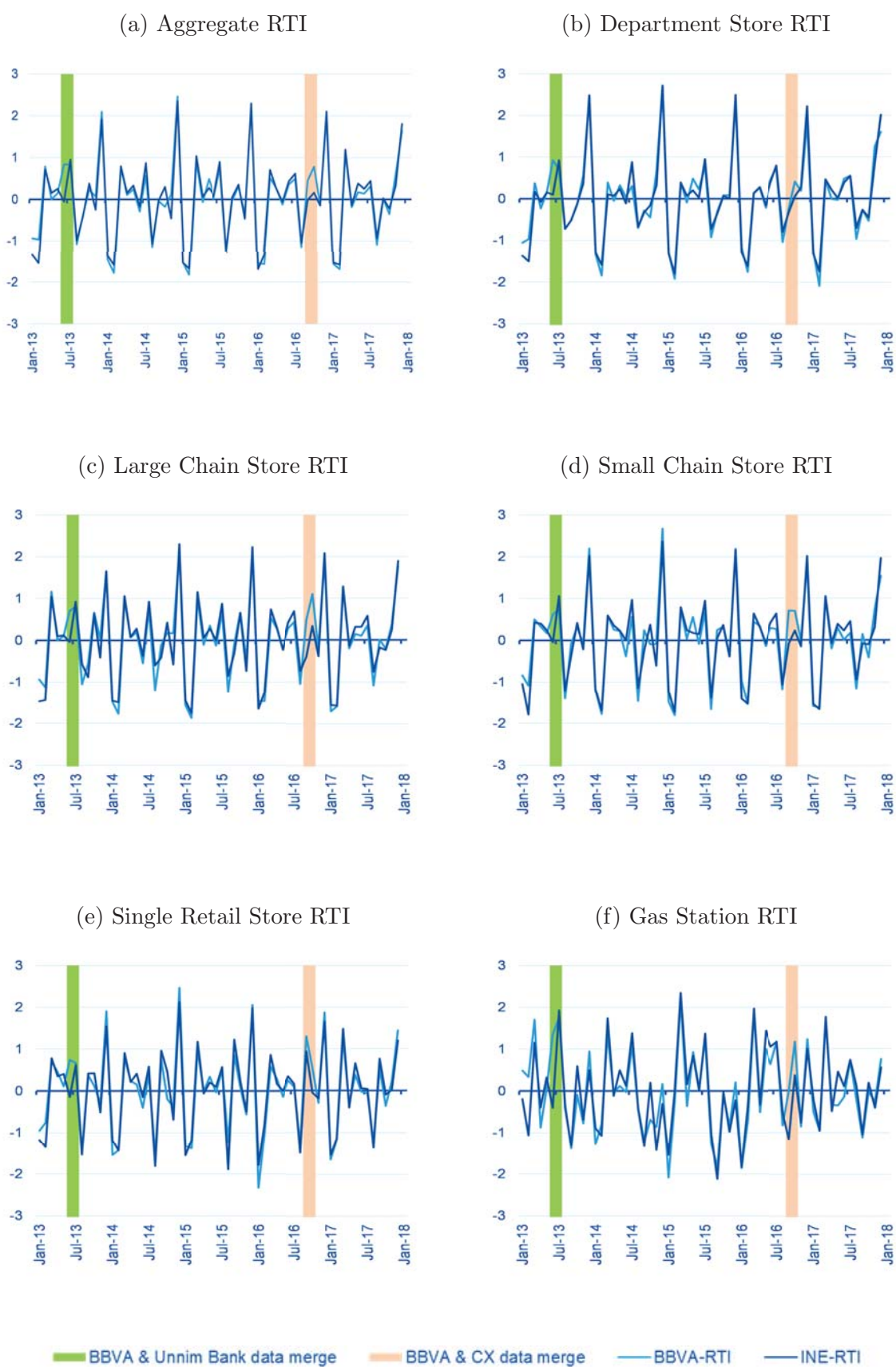
Table 2: INE-RTI and BBVA-RTI

	<i>R</i> -squared		Hansen stability test P-value (H0: parameter stability)	
	Levels	Monthly growth rate	Levels	Monthly growth rate
Total	.89	.94	.22	.90
Department stores	.89	.95	.03	.99
Large chain stores	.73	.91	.32	.93
Small chain stores	.48	.91	.30	.67
Single Retail stores	.57	.92	.21	.85
Service stations	.05	.79	.01	.18

Note: the sample period for the test is 2013.01-2017.12.

When analyzing the cases of “small chain stores” and “single retail stores”, it can be seen that the dynamics of the series (in monthly growth rates) are similar, but the indices built on card transaction data appear to be more volatile. In contrast, “gas stations” is where greater differences appear. One possible explanation for the greater similarities found for the indices relating to larger retailers could be explained by a more intense use of credit and debit cards in these kinds of stores. The differences that emerge for “gas stations” could be due to inflows of cash payments. In the left panel of Table 2, we show the *R*-squared from the linear regression between the BBVA-RTI and the official indices. In the right panel of the table, we show the Hansen stability test p values for these regressions. The results indicate that, although the correlation between the series levels is high, the relationship is statistically stable for all the distribution channels only when growth rates are taken into account. Altogether, the results clearly show that co-movement between the series is robust enough to reinforce the idea that card transaction data provide suitable information for correctly replicating the official RTI.

Figure 5: Retail Trade Index (RTI): aggregate and by distribution Classes (standardized monthly growth rate)



3.2 Similarities with Regional Indices

As mentioned above, the INE publishes a RTI for each of Spain's 17 autonomous regions. Taking advantage of the high geographical disaggregation allowed by the card transaction data, we constructed each of these 17 indices based on that information. Figure 6 shows the dynamic of all the regional INE-RTI and BBVA-RTI, once again expressed in monthly growth rates. The figures show great similarities in the dynamics of the indices, which are also reflected in the high R-squared and Hansen stability test p values (see Table 3).

One of the bi-products of using card transaction data for computing regional RTIs is the possibility of obtaining 5 distribution groups for each of the autonomous regions, which are not publicly available from INE.¹⁷

4 Higher Dimensionality: Granular Data by Time Span, Geography and Further Dimensions

After checking the constructed BBVA-RTI replicates the official figures published by the INE at all levels in which is available, we went one step further in taking advantage of the BBVA quasi-real-time transaction data, getting insights of the retail trade at higher frequencies (e.g., daily) with greater geographical detail (i.e., at the provincial level), as well as exploiting new dimensions that the INE-RTI does not provide, both on the supply side (e.g., sector of activity) and the demand side (e.g., socioeconomic characteristics of consumers, such as sex, age, and income level).

The high frequency of the BBVA-RTI (Figure 7) covers the one-month lag in publication by INE, providing timely answers on retail sales for particular events. It also allows a deeper analysis of the retailers' customers behavior, uncovering the aggregate daily consumption dynamic using a structural time series model like the one proposed by Harvey et al. (1997) (an example is shown in Section 5).

The geo-located information from the PoSs gives a higher geographical disaggregation to the BBVA-RTI, providing information on the evolution of retail sales that is not published by the INE. We have the RTI for the 50 provinces (NUTS 3 geographical division in

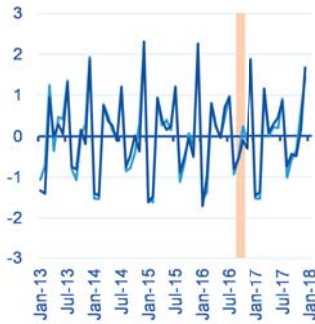
¹⁷All figures regarding the 5 distribution groups by regions are available upon request.

Figure 6: RTI by Autonomous Region (standardized monthly growth rate)

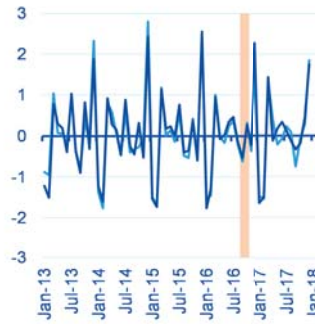


Figure 6: RTI by Autonomous Region (standardized monthly growth rate)

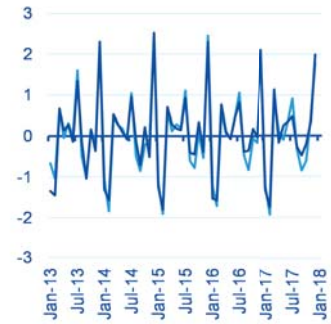
(j) Valencian Community



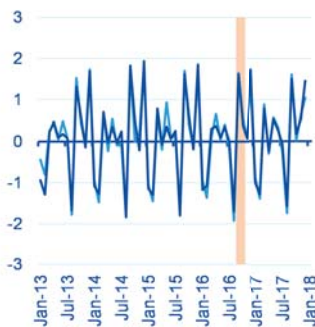
(k) Extremadura



(l) Galicia



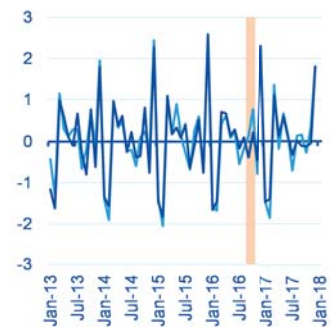
(m) Community of Madrid



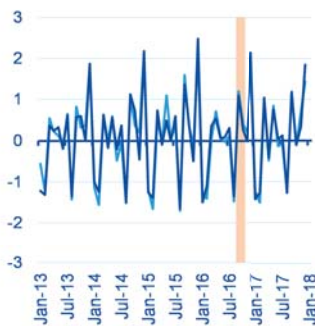
(n) Region of Murcia



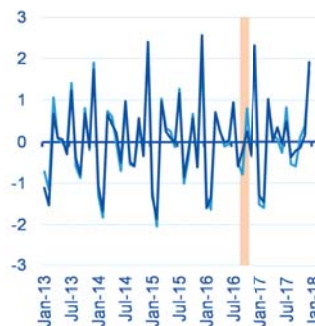
(o) Navarre



(p) Basque Country



(q) Rioja



(r) Spain



■ BBVA & Unnim Bank data merge

■ BBVA & CX data merge

— BBVA-RTI

— INE-RTI

Table 3: INE-RTI and BBVA-RTI

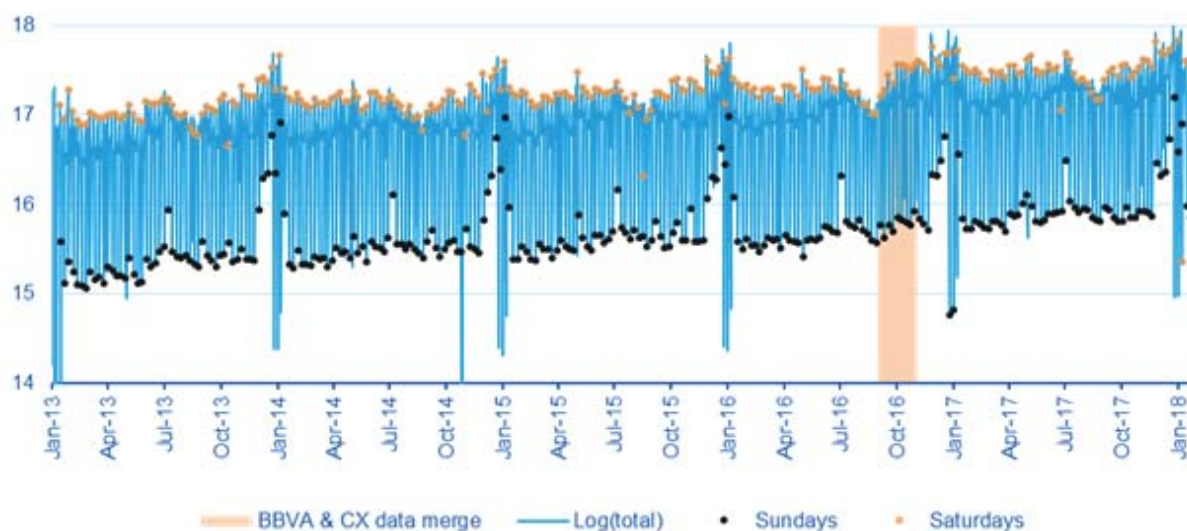
	<i>R</i> -squared		Hansen stability test P-value (H0: parameter stability)	
	Levels	Monthly growth rate	Levels	Monthly growth rate
Andalusia	.72	.96	.14	.32
Aragon	.52	.91	.05	.24
Asturias	.76	.94	.20	.70
Balearic Islands	.72	.90	.19	.96
Canary Islands	.87	.94	.16	.21
Cantabria	.87	.96	.10	.87
Castile and León	.70	.94	.05	.96
Castilla-La Mancha	.65	.93	.09	.86
Catalonia	.38	.83	.37	.23
Valencian Community	.81	.94	.06	.69
Extremadura	.54	.94	.06	.48
Galicia	.82	.95	.07	.51
Community of Madrid	.79	.96	.09	.88
Region of Murcia	.65	.91	.27	.15
Navarre	.78	.91	.08	.27
La Rioja	.78	.95	.05	.82
Basque Country	.82	.95	.47	.38

Note: the sample period for the test is 2013.01-2017.12.

the EUROSTAT nomenclature), but it would potentially be possible to generate an RTI at the city or postcode level. Figure 8 shows the evolution of the RTI in December 2017 in each province as compared to December 2016 (% YoY). Although it is not feasible to compare the dynamics of these series with the INE statistics (the INE-RTI information is published by autonomous region), the consistency of the index at the national level and by autonomous region, as well as the correspondence between the INE-RTI and the BBVA-RTI for those autonomous regions with only one province, brings a high likelihood to the rest of the provincial indices.

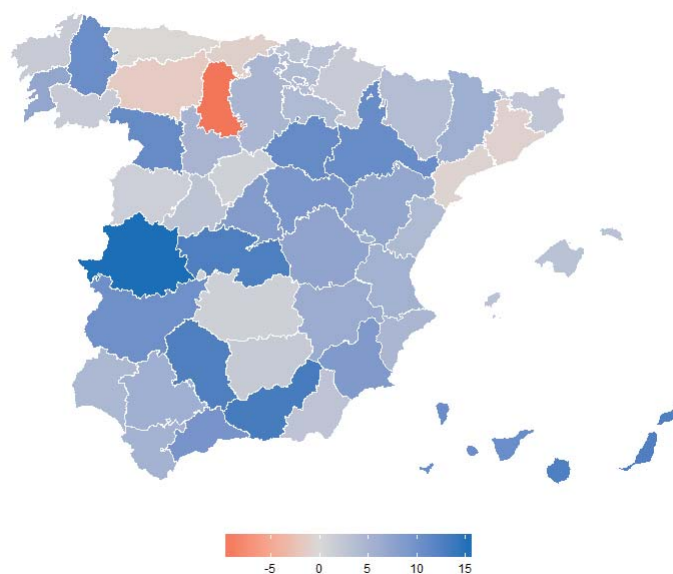
The transaction data include information on the main activity of each PoS, allowing for a higher economic activity disaggregation than the information published by INE. The analysis of the BBVA-RTI by sector of activity show that the lowest median ticket

Figure 7: Aggregate Retail Trade - Daily Frequency (logarithms)



Note: The very low value observed in October 27th, 2014 is only related to specific problems regarding data provisioning during that day.

Figure 8: BBVA-RTI by Province in Dec-17 (% YoY)



Source: BBVA.

in December 2017 was for healthcare, other services, and the bar and restaurant sectors, respectively. In contrast, technology, sports and toys, and automotive were among the sectors in which we found the highest median expenditure (Figure 9).¹⁸

¹⁸For the sector's analysis we decide to include some sectors that are not taking into account in the official RTI, as "Bars and restaurants" or the "Accommodation" sectors

5 Working with Daily Data

One of the most important features of working with card transaction data is the possibility of studying aggregate consumption patterns. In other words, given that high frequency data is available, it is feasible to study the actors' decisions regarding daily, or even hourly, expenditure. The daily BBVA-RTI displays weekly, monthly and annual seasonalities, plus some calendar effects. Even though the figure shows a very volatile pattern, it is clear that Saturdays are, in general, the days on which people consume the most, while on Sundays they consume the least.¹⁹ In addition, it seems that, within a year, December is the month with the highest consumption, followed by July, while calendar effects relating to public holidays or the Easter Week can be found where the blue line becomes thicker. Modeling all those patterns into one single model that operates at daily frequency is not an easy task and several issues need to be taken into account. Not only the numbers of days within a month or within a year change,²⁰ but also the position of the date on a specific day of the week²¹ or for holidays like Easter is not the same from year to year. As mentioned in Cabrero et al. (2009), two major approaches exist for dealing with those and other problems in the context of daily time series: the ARIMA model, as the one suggested by Bell and Hillmer (1984), and the structural time series (STS) approach followed, among others, by Harvey et al. (1997), De Livera et al. (2011) or Taylor and Letham (2018). In this paper, we rely on the second approach, closely following the model of Harvey et al. (1997), which includes periodic cubic splines to model some of the seasonal components exhibited by the daily BBVA-RTI data.²²

Using Harvey et al. (1997) notation, the basic STS model can be described for a univariate time series (y_t) as

$$y_t = \mu_t + \gamma_t + \varepsilon_t \quad \varepsilon_t \sim NID(0, \sigma_\varepsilon^2) \quad (1)$$

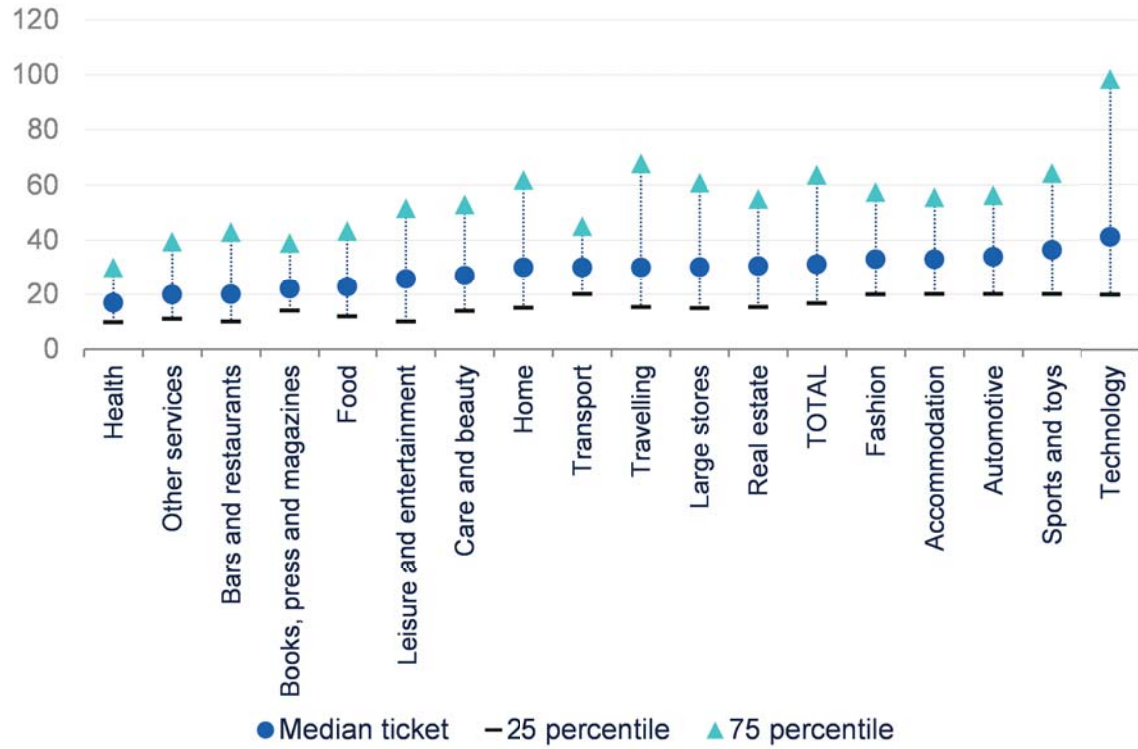
¹⁹Given October 27th, 2014 is a day when data provisioning problems emerged we decide to treat that day as a missing observation.

²⁰The number of days in a year depends on its being a leap year or not.

²¹E.g., January 1st is not always on a Monday.

²²Harvey et al. (1997) indicate that, by giving more scope for a parsimonious parameterization, this approach better captures periods with sharp peaks, like the one that can be observed surrounding Christmas.

Figure 9: BBVA-RTI: Median Transaction by Sector of Activity in Dec-17(Euros)



Source: BBVA.

where μ_t , γ_t and ε_t are, respectively, the stochastic trend, the stochastic or deterministic seasonal components, and the irregular component, while $t = 1, \dots, T$. The dynamic of the stochastic trend is defined by,

$$\mu_t = \mu_{t-1} + \beta_{t-1} + \nu_t \quad \nu_t \sim NID(0, \sigma_\nu^2) \quad (2)$$

$$\beta_t = \beta_{t-1} + \varsigma_t \quad \varsigma_t \sim NID(0, \sigma_\varsigma^2) \quad (3)$$

where the level and the slope of the trend are given by μ_t and β_t , while ν_t and ς_t are mutually independent processes. The seasonal component is characterized as the sum of the day of the week effect (γ_t^d), the intra-monthly effects (γ_t^m), the intra-yearly effects (γ_t^y), and moving and fixed holidays (γ_t^h):²³

$$\gamma_t = \gamma_t^d + \gamma_t^m + \gamma_t^y + \gamma_t^h \quad (4)$$

²³For notational simplicity, we have included the fixed and moving festivals as seasonal components, even though both are calendar effects.

Each of the seasonal components is described by its own dynamics. In particular, to model the day of the week effect, we rely on stochastic dummies of the form:

$$\gamma_t^d = - \sum_{j=1}^{s-1} \gamma_{t-j}^d + \omega_t \quad \omega_t \sim NID(0, \sigma_\omega^2) \quad (5)$$

where $s = 7$ is the number of days in a week.²⁴ By imposing $\sigma_\omega^2 = 0$, the seasonality becomes deterministic (the main results remain unchanged when this is done).

Intra-monthly and intra-yearly effects are both modeled by using time-varying cubic splines. For setting a spline it is necessary to choose h^i knots in the range of $[0, N^i]$, where N^i is the number of the days in a month or in a year ($i = m, y$). Once again, following Harvey et al. (1997) notation, we define

$$\gamma_d^i = \mathbf{z}_d^{i'} \gamma_t^i \quad d = 1, \dots, N^i; i = m, y$$

where \mathbf{z}_d^i is vector of dimension $(h^i - 1) \times 1$, which depends on the number and positioning of the knots and it should be defined in a way that guarantees continuity from one period to the next. By letting the vector γ_t^i follow a random path, γ_d^i becomes stochastic. For a detailed explanation on the modeling of periodic cubic splines, see Harvey et al. (1997).

In order to specify the length N^i , it was necessary to take into account the fact that not all months or all years have the same number of days. To deal with this problem, we followed the strategy of Cabrero et al. (2009) and set $N^m = 31$ for all months and $N^y = 366$ for all years. The days that do not exist (February 29th when the year is not a leap year or days like April 31st) were considered to be missing values and were easily handled, given that our estimation strategy relied on Kalman filter. When using periodic cubic splines, a second issue to be taken into account was related to the number and position of the knots. Moreover, to obtain periodicity, the value of the first and the last knot within a period should be equal.²⁵ Therefore, two consecutive days with similar characteristics

²⁴The restriction means that the daily effects over the past week sum to ω_t :

$$\sum_{j=0}^{s-1} \gamma_{t-j}^d = \omega_t \quad \text{for } t = 1, \dots, T \quad (6)$$

²⁵As mentioned in Cabrero et al. (2009), this is strictly true only for the case of deterministic periodic cubic splines.

should be chosen for placing the starting and final knots. Cabrero et al. (2009) correctly highlight that setting the first and last knot as January 1st and December 31st for intra-yearly seasonality gives the particularities of those days, while for intra-monthly patterns the first and last days of the month are less likely to be similar than two days in the middle of the month.²⁶ The dates finally chosen for the placement of the first and last knot for the annual periodicity were February 18th and 19th, while the 22nd and 23rd of each month were selected for monthly splines. The decision on the final number and position of the knots was based on the analysis of residual correlograms, goodness-of-fit performance, and visual observation. In particular, after trying many different specifications, we decided to include 7 knots for intra-month patterns and 18 knots for intra-year seasonality. As in Harvey et al. (1997), when dealing with annual seasonality, we needed to impose a relatively larger number of knots in the short period of time surrounding Christmas, while fewer knots were needed when seasonal patterns changed slowly. The knots for the intra-monthly spline were placed at 1, 5, 9, 13, 17, 21, 25 and 28²⁷ and for the intra-yearly spline at 1, 25, 50, 75, 125, 150, 200, 225, 251, 286, 296, 301, 306, 313, 320, 330, 345 and 365.²⁸ To model holidays effects (γ_t^h), we use a deterministic approach and we include dummy variables for each of those specific days.²⁹ It should be noted that $\gamma_t^h = \sum_{i=1}^I \gamma_t^{h,i}$ where $i = 1, \dots, I$ is an indicator for each holiday. Under this notation, the holiday's effect was modeled as

$$\gamma_t^{h,i} = w_i(B)h(\tau_i, t) \quad (7)$$

where $w_i(B)$ is a polynomial lag operator and $h(\tau_i, t)$ is an indicator function that takes the value 1 when $\tau_i = t$ and zero otherwise. The presence of a polynomial lag operator is related to the fact that days surrounding a holiday could also show some peculiarities (e.g., people going to the supermarket the day before a holiday)³⁰ (see table 4 for a description

²⁶It should also be remembered that in 5 out of the 12 months of the year, the last day of the month does not really exist (e.g., April 31st) and it is considered as a missing value for estimation purposes. Also, the end of the month displays a sharp trend given the monthly seasonal pattern.

²⁷Knots 1 and 28 correspond, respectively, to the 22nd and 23rd day of the month.

²⁸Notice that knots 1 and 365 correspond, respectively, to February 18th and 19th.

²⁹In Spain, there are three classes of public holidays: national holidays, holidays specific to each autonomous region and municipal holidays. As the daily model will be applied to the national aggregate RTI, only national holidays were taken into account.

³⁰To model holidays, we also took into account the fact that the holidays effect plus the non-holiday factor should be null (the dummy variables were altered to get this kind of effect).

Table 4: Fixed Holiday Lag Polynomials

	Polynomial
Good Friday	$(w_0 + w_1B + \dots + w_{12}B^{12}) B^{(-6)}$
New Year (Jan 1 st), Epiphany (Jan 6 th), Labor Day (May 1 st), Assumption (Aug 15 th), Spain's National Holiday (Oct 12 th) and All Saints' Day (Nov 1 st)	$(w_0 + w_1B + \dots + w_4B^4) B^{(-1)}$
Immaculate Conception (Dec 8 th)	$(w_0 + w_1B + \dots + w_8B^8) B^{(-3)}$

of the polynomial lag operator set for each holiday). When a National holiday falls on a Sunday, we opted not to include a dummy for that day.

Since the whole model described in (1)-(7) can be written in state space form, maximum likelihood estimation in combination with Kalman filter could be used. The main results are summarized in Figures 10a to 10f.

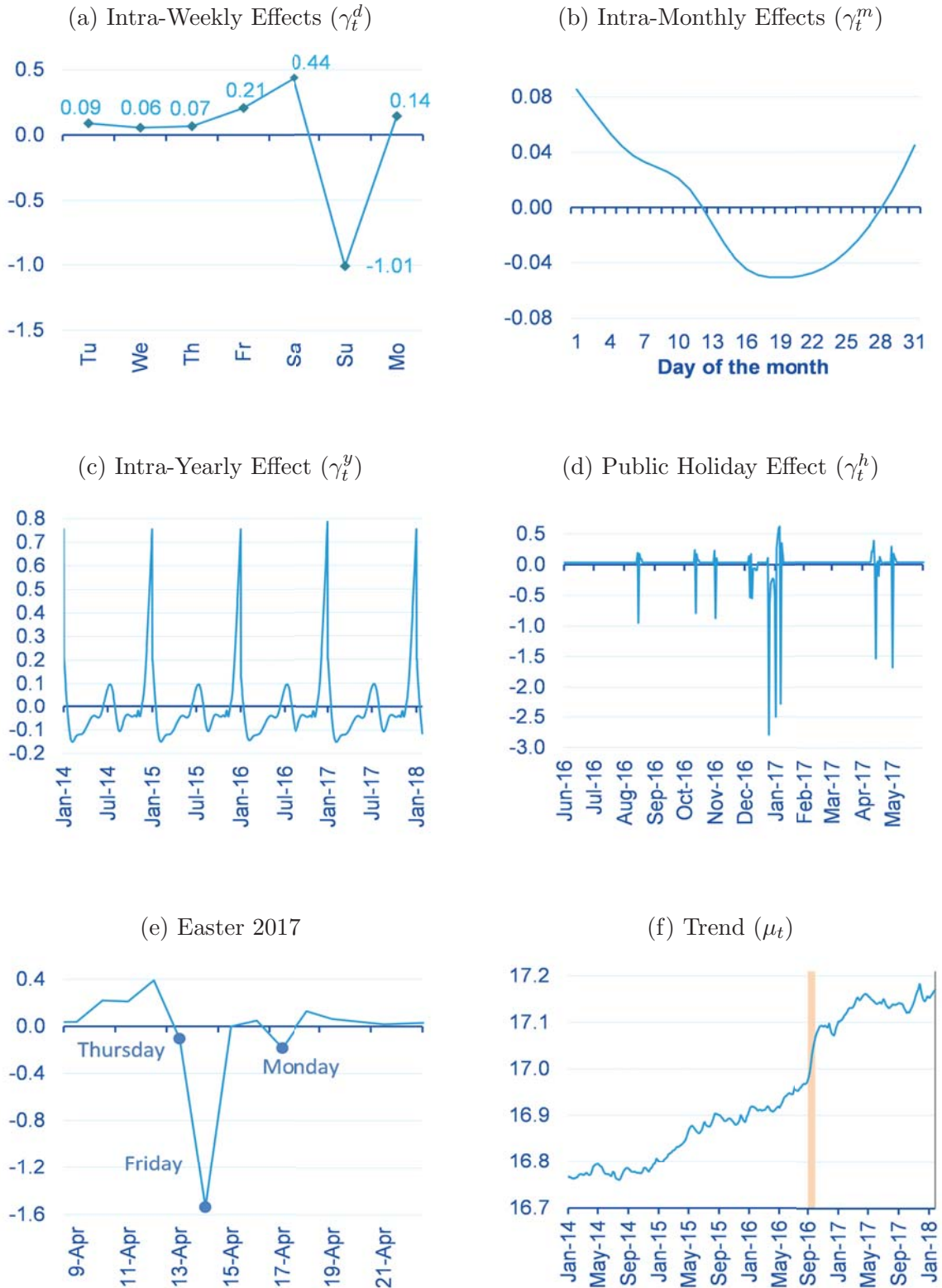
Figure 10a shows the intra-weekly effects for a week of the year.³¹ As observed by the raw data (Figure 7), Sundays are the days of the week with the lowest consumption while Saturdays the highest one. This behavior is not surprising in a country like Spain, where a Sunday is a rest day, meaning that most retail shops are closed. On the other hand, it seems that Saturdays are used for doing the shopping that is harder to do on weekdays, maybe because of restrictions caused by working hours. For weekdays, the consumption pattern looks to be very similar between Monday and Thursday, while it rises on Fridays.

The intra-monthly effects are displayed in Figure 10b. The results show that consumption is higher during the first two weeks and the last three days of a month, suggesting a consumption pattern linked to salary payment.³² Working with statistics on the daily banknotes in circulation in Europe, Cabrero et al. (2009) found a similar intra-monthly behavior. This result is in line with Stephens (2003, 2006), Shapiro (2005), Mastrobuoni and Weinberg (2009) and Aguila et al. (2017), who found monthly increase in consump-

³¹As we are working with stochastic dummies, the consumption pattern is not exactly similar for every week of the year. Figure 10a shows the intra-weekly behavior for the second week of January, but results are very similar for any week of the year.

³²In Spain, wages are paid monthly, normally during the first or last week of the month.

Figure 10: Seasonal effects for the daily RTI



Note: parameters for the intra-weekly effects are the ones that correspond to the second week of January 2018. The monthly seasonal pattern correspond to October 2017. Showing 2017 in the case of the Public Holiday Effects is only for expositional reasons (fixed holiday are deterministic in our model, meaning that each holiday effect remain constant along the whole sample)

tion during the week of and the week after payroll. Alternative explanations for this kind of consumption behavior rely on the existence of credit restrictions, liquidity constraints, myopia, or the existence of hyperbolic discounting in the actor's preferences.

Figure 10c shows the intra-yearly seasonality. As can be observed, there is a sharp peak starting in the first few days of December and ending around January 10th. This period is related to the Christmas holidays, when the increase in retail sales may be associated with purchasing Christmas gifts. Another period of high retail consumption is during July, which may be related to the summer sales period. The rest of the year displays a very similar pattern, although February and March appear to be the months with the lowest sales. The same kind of intra-yearly seasonality is the one that the INE found in the monthly data for the RTI.

The holiday effects are shown in Figure 10d. As expected, all national holidays have a negative effect on retail sales, which is obviously related to the fact that most retail stores are closed on those days.³³ Also, the days before and after a holiday show a positive pattern. This could be explained by a distribution of consumption around the holiday date if it coincides with a working day. December 25th and January 1st and 6th are the holidays with the highest negative effects on retail sales followed by May 1st.

Given the importance of Easter, Figure 10e shows consumption during a period of two weeks around those days. As can be seen, consumption increases during the week prior to the Easter weekend and falls on Good Friday. The fall observed on Easter Monday is not surprising as it is a holiday in some of the biggest autonomous regions (e.g., Catalonia). Finally, Figure 10f shows the estimated stochastic daily trend. As expected from dynamic observed in Figure 3, a positive trend was found during the period for which the model is estimated.

The results obtained using the daily STS model should be considered carefully. Since we only have five years of data, the intra-yearly and fixed holiday effects were mostly indicative. As time passes and we amass more data, a better estimate will be possible.

³³Note the absence of some holidays during the period s plotted (October 12th, for example). As previously explained, we did not include dummies for a holiday when it fell on a Sunday.

6 Conclusions

The new digital era, together with the development of data infrastructure, technologies, and data science techniques, presents a chance for economic research to take advantage of unprecedented amounts of data. In this paper, we developed an alternative way of measuring the retail trade in Spain using high dimensional data collected from the digital footprint of BBVA clients using their credit or debit card transactions at a Spanish point of sale (PoS) terminal.

The results of this paper show that card transaction data replicate with great precision the evolution of the Spanish RTI, an important macroeconomic indicator showing the evolution of aggregate consumption and, therefore, of economic activity. The RTI we develop replicates the dynamics of the aggregate Spanish RTI, the RTI by region (Spain's autonomous regions) and the RTI by retailer type (distribution classes). In addition, the higher data granularity allows us to reproduce the evolution of daily retail sales, with timely answers on the impact of any retail sales event, great geographical detail (by province or even by postcode) and information on further dimensions (such as the sector of activity).

We also investigate the behavior of retailers' customers to analyze the high frequency consumption dynamics using a structural time series model. We found regular, significant patterns that displayed strong intra-weekly (Sundays are the days of the week with the lowest consumption while Saturdays are the ones with the highest one), intra-monthly (consumption is higher during the first two weeks and last three days of a month) and intra-yearly seasonalities (we found a sharp peak in retail sales starting in the first few days of December and ending around January 10th, and also in July), which are also affected by holiday effects.

This line of research could be extended to exploit further dimensions offered by the data, such as the credit consumption behavior of BBVA clients or the socioeconomic features of online versus offline payments. Deseasonalizing the index to work with real values instead of nominal ones, and testing its predictive power at nowcasting, is left for further research.

References

- Aguila, E., Kapteyn, A. and Perez-Arce, F. (2017), ‘Consumption smoothing and frequency of benefit payments of cash transfer programs’, *American Economic Review* **107**(5), 430–35.
- Alonso, J., Ganga, H., Lozano, J., Martín, I., Mirón, P., Plata, C., Rubio, A., Santos, A. and Villar, J. (2019), ‘The use of cash and its determinants’, *Economic Watch. BBVA Research*.
- Aprigliano, V., Ardizzi, G. and Monteforte, L. (2019), ‘Using payment system data to forecast the economic activity’, *International Journal of Central Banking* (**forthcoming**).
- Bell, W. R. and Hillmer, S. C. (1984), ‘Issues involved with the seasonal adjustment of economic time series’, *Journal of Business & Economic Statistics* **2**(4), 291–320.
- Cabrero, A., Camba-Mendez, G., Hirsch, A. and Nieto, F. (2009), ‘Modelling the daily banknotes in circulation in the context of the liquidity management of the european central bank’, *Journal of Forecasting* **28**(3), 194–217.
- Camacho, M. and Páez, M. J. (2018), ‘Forecasting travellers in Spain with Google search volume indices’, *Tourism Economics* **24**(4), 434–448.
- Cavallo, A. (2018), ‘Scraped data and sticky prices’, *Review of Economics and Statistics* **100**(1), 105–119.
- Cavallo, A. and Rigobon, R. (2016), ‘The Billion Prices Project: Using online prices for measurement and research’, *Journal of Economic Perspectives* **30**(2), 151–78.
- Choi, H. and Varian, H. (2012), ‘Predicting the present with Google Trends’, *Economic Record* **88**, 2–9.
- De Livera, A. M., Hyndman, R. J. and Snyder, R. D. (2011), ‘Forecasting time series with complex seasonal patterns using exponential smoothing’, *Journal of the American Statistical Association* **106**(496), 1513–1527.

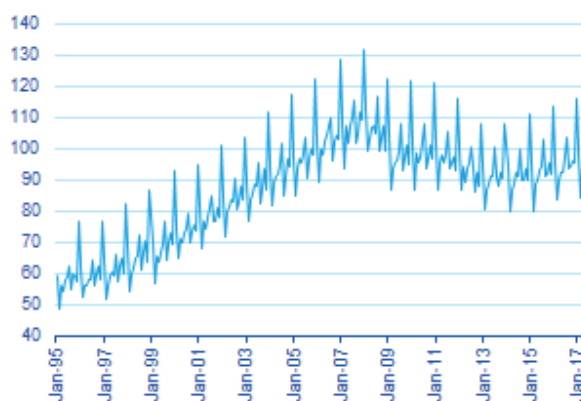
- Duarte, C., Rodrigues, P. M. and Rua, A. (2017), ‘A mixed frequency approach to the forecasting of private consumption with atm/pos data’, *International Journal of Forecasting* **33**(1), 61–75.
- Esselink, H. and Hernández, L. (2017), ‘The use of cash by households in the euro area’, *ECB Occasional Paper* (201).
- Galbraith, J. W. and Tkacz, G. (2015), Nowcasting gdp with electronic payments data, Statistics Paper Series 10, European Central Bank.
- Gil, M., Pérez, J. J., Sánchez, A. J. and Urtasun, A. (2018), Nowcasting private consumption: traditional indicators, uncertainty measures, credit cards and some internet data, Working Papers 1842, Banco de España.
- Harvey, A., Koopman, S. J. and Riani, M. (1997), ‘The modeling and seasonal adjustment of weekly observations’, *Journal of Business & Economic Statistics* **15**(3), 354–68.
- Mastrobuoni, G. and Weinberg, M. (2009), ‘Heterogeneity in intra-monthly consumption patterns, self-control, and savings at retirement’, *American Economic Journal: Economic Policy* **1**(2), 163–89.
- McLaren, N. and Shanbhogue, R. (2011), ‘Using internet search data as economic indicators’, *Bank of England Quarterly Bulletin* **51**(2), 134–140.
- Shapiro, J. M. (2005), ‘Is there a daily discount rate? evidence from the food stamp nutrition cycle’, *Journal of public Economics* **89**(2-3), 303–325.
- Sobolevsky, S., Bojic, I., Belyi, A., Sitko, I., Hawelka, B., Arias, J. M. and Ratti, C. (2015), Scaling of city attractiveness for foreign visitors through big data of human economical and social media activity, in ‘big data (BigData congress), 2015 IEEE international congress on’, IEEE, pp. 600–607.
- Stephens, M. (2003), ‘“3rd of the month”: Do social security recipients smooth consumption between checks?’, *American Economic Review* **93**(1), 406–422.

- Stephens, M. (2006), ‘Paycheque receipt and the timing of consumption*’, *The Economic Journal* **116**(513), 680–701.
- Stock, J. and Watson, M. (1989), New indexes of coincident and leading economic indicators, *in* ‘NBER Macroeconomics Annual 1989, Volume 4’, NBER Chapters, National Bureau of Economic Research, Inc, pp. 351–409.
- Stock, J. and Watson, M. (1991), A probability model of the coincident economic indicators, *in* G. Moore and K. Lahiri, eds, ‘The Leading Economic Indicators: New Approaches and Forecasting Records’, Cambridge University Press, pp. 63–90.
- Taylor, S. J. and Letham, B. (2018), ‘Forecasting at scale’, *The American Statistician* **72**(1), 37–45.

Appendices

Appendix A Figures

Figure A.1: INE-RTI (nominal and non-seasonal adjusted, base 2010=100)



Source: INE.

BANCO DE ESPAÑA PUBLICATIONS

WORKING PAPERS

- 1820 MARIO ALLOZA, PABLO BURRIEL and JAVIER J. PÉREZ: Fiscal policies in the euro area: revisiting the size of spillovers.
- 1821 MARTA MARTÍNEZ-MATUTE and ALBERTO URTASUN: Uncertainty, firm heterogeneity and labour adjustments. Evidence from European countries.
- 1822 GABRIELE FIORENTINI, ALESSANDRO GALESÌ, GABRIEL PÉREZ-QUIRÓS and ENRIQUE SENTANA: The rise and fall of the natural interest rate.
- 1823 ALBERTO MARTÍN, ENRIQUE MORAL-BENITO and TOM SCHMITZ: The financial transmission of housing bubbles: evidence from Spain.
- 1824 DOMINIK THALER: Sovereign default, domestic banks and exclusion from international capital markets.
- 1825 JORGE E. GALÁN and JAVIER MENCÍA: Empirical assessment of alternative structural methods for identifying cyclical systemic risk in Europe.
- 1826 ROBERTO BLANCO and NOELIA JIMÉNEZ: Credit allocation along the business cycle: evidence from the latest boom bust credit cycle in Spain.
- 1827 ISABEL ARGIMÓN: The relevance of currency-denomination for the cross-border effects of monetary policy.
- 1828 SANDRA GARCÍA-URIBE: The effects of tax changes on economic activity: a narrative approach to frequent anticipations.
- 1829 MATÍAS CABRERA, GERALD P. DWYER and MARÍA J. NIETO: The G-20 regulatory agenda and bank risk.
- 1830 JACOPO TIMINI and MARINA CONESA: Chinese exports and non-tariff measures: testing for heterogeneous effects at the product level.
- 1831 JAVIER ANDRÉS, JOSÉ E. BOSCA, JAVIER FERRI and CRISTINA FUENTES-ALBERO: Households' balance sheets and the effect of fiscal policy.
- 1832 ÓSCAR ARCE, MIGUEL GARCÍA-POSADA, SERGIO MAYORDOMO and STEVEN ONGENA: Adapting lending policies when negative interest rates hit banks' profits.
- 1833 VICENTE SALAS, LUCIO SAN JUAN and JAVIER VALLÉS: Corporate cost and profit shares in the euro area and the US: the same story?
- 1834 MARTÍN GONZÁLEZ-EIRAS and CARLOS SANZ: Women's representation in politics: voter bias, party bias, and electoral systems.
- 1835 MÓNICA CORREA-LÓPEZ and BEATRIZ DE BLAS: Faraway, so close! Technology diffusion and firm heterogeneity in the medium term cycle of advanced economies.
- 1836 JACOPO TIMINI: The margins of trade: market entry and sector spillovers, the case of Italy (1862-1913).
- 1837 HENRIQUE S. BASSO and OMAR RACHEDI: The young, the old, and the government: demographics and fiscal multipliers.
- 1838 PAU ROLDÁN and SONIA GILBUKH: Firm dynamics and pricing under customer capital accumulation.
- 1839 GUILHERME BANDEIRA, JORDI CABALLÉ and EUGENIA VELLA: Should I stay or should I go? Austerity, unemployment and migration.
- 1840 ALESSIO MORO and OMAR RACHEDI: The changing structure of government consumption spending.
- 1841 GERGELY GANICS, ATSUSHI INOUE and BARBARA ROSSI: Confidence intervals for bias and size distortion in IV and local projections – IV models.
- 1842 MARÍA GIL, JAVIER J. PÉREZ, A. JESÚS SÁNCHEZ and ALBERTO URTASUN: Nowcasting private consumption: traditional indicators, uncertainty measures, credit cards and some internet data.
- 1843 MATÍAS LAMAS and JAVIER MENCÍA: What drives sovereign debt portfolios of banks in a crisis context?
- 1844 MIGUEL ALMUNIA, POL ANTRÀS, DAVID LÓPEZ-RODRÍGUEZ and EDUARDO MORALES: Venting out: exports during a domestic slump.
- 1845 LUCA FORNARO and FEDERICA ROMEI: The paradox of global thrift.
- 1846 JUAN S. MORA-SANGUINETTI and MARTA MARTÍNEZ-MATUTE: An economic analysis of court fees: evidence from the Spanish civil jurisdiction.
- 1847 MIKEL BEDAYO, ÁNGEL ESTRADA and JESÚS SAURINA: Bank capital, lending booms, and busts. Evidence from Spain in the last 150 years.
- 1848 DANIEL DEJUÁN and CORINNA GHIRELLI: Policy uncertainty and investment in Spain.
- 1849 CRISTINA BARCELÓ and ERNESTO VILLANUEVA: The risk of job loss, household formation and housing demand: evidence from differences in severance payments.

- 1850 FEDERICO TAGLIATI: Welfare effects of an in-kind transfer program: evidence from Mexico.
- 1851 ÓSCAR ARCE, GALO NUÑO, DOMINIK THALER and CARLOS THOMAS: A large central bank balance sheet? Floor vs corridor systems in a New Keynesian environment.
- 1901 EDUARDO GUTIÉRREZ and ENRIQUE MORAL-BENITO: Trade and credit: revisiting the evidence.
- 1902 LAURENT CAVENAILE and PAU ROLDAN: Advertising, innovation and economic growth.
- 1903 DESISLAVA C. ANDREEVA and MIGUEL GARCÍA-POSADA: The impact of the ECB's targeted long-term refinancing operations on banks' lending policies: the role of competition.
- 1904 ANDREA ALBANESE, CORINNA GHIRELLI and MATTEO PICCHIO: Timed to say goodbye: does unemployment benefit eligibility affect worker layoffs?
- 1905 CORINNA GHIRELLI, MARÍA GIL, JAVIER J. PÉREZ and ALBERTO URTASUN: Measuring economic and economic policy uncertainty, and their macroeconomic effects: the case of Spain.
- 1906 CORINNA GHIRELLI, JAVIER J. PÉREZ and ALBERTO URTASUN: A new economic policy uncertainty index for Spain.
- 1907 SERGIO PUENTE and ELENA VOZMEDIANO: Minimum and bargained wages: pass-through and labor market performance.
- 1908 SERGIO MAYORDOMO and OMAR RACHEDI: The China syndrome affects banks: the credit supply channel of foreign import competition.
- 1909 MÓNICA CORREA-LÓPEZ, MATÍAS PACCE and KATHI SCHLEPPER: Exploring trend inflation dynamics in Euro Area countries.
- 1910 JAMES COSTAIN, ANTON NAKOV and BORJA PETIT: Monetary policy implications of state-dependent prices and wages.
- 1911 JAMES CLOYNE, CLODOMIRO FERREIRA, MAREN FROEMEL and PAOLO SURICO: Monetary policy, corporate finance and investment.
- 1912 CHRISTIAN CASTRO and JORGE E. GALÁN: Drivers of productivity in the Spanish banking sector: recent evidence.
- 1913 SUSANA PÁRRAGA RODRÍGUEZ: The effects of pension-related policies on household spending.
- 1914 MÁXIMO CAMACHO, MARÍA DOLORES GADEA and ANA GÓMEZ LOSCOS: A new approach to dating the reference cycle.
- 1915 LAURA HOSPIDO, LUC LAEVEN and ANA LAMO: The gender promotion gap: evidence from Central Banking.
- 1916 PABLO AGUILAR, STEPHAN FAHR, EDDIE GERBA and SAMUEL HURTADO: Quest for robust optimal macroprudential policy.
- 1917 CARMEN BROTO and MATÍAS LAMAS: Is market liquidity less resilient after the financial crisis? Evidence for US treasuries.
- 1918 ESTEBAN GARCÍA-MIRALLES, NEZIH GUNER and ROBERTO RAMOS: The Spanish personal income tax: facts and parametric estimates.
- 1919 SAKI BIGIO, GALO NUÑO and JUAN PASSADORE: A framework for debt-maturity management.
- 1920 LUIS J. ÁLVAREZ, MARÍA DOLORES GADEA and ANA GÓMEZ-LOSCOS: Inflation interdependence in advanced economies.
- 1921 DIEGO BODAS, JUAN R. GARCÍA LÓPEZ, JUAN MURILLO ARIAS, MATÍAS J. PACCE, TOMASA RODRIGO LÓPEZ, JUAN DE DIOS ROMERO PALOP, PEP RUIZ DE AGUIRRE, CAMILO A. ULLOA and HERIBERT VALERO LAPAZ: Measuring retail trade using card transactional data.