

**THE SPANISH PERSONAL INCOME TAX: 2019
FACTS AND PARAMETRIC ESTIMATES**

Esteban García-Miralles, Nezhir Guner
and Roberto Ramos

**Documentos de Trabajo
N.º 1907**

BANCO DE ESPAÑA
Eurosistema



THE SPANISH PERSONAL INCOME TAX: FACTS AND PARAMETRIC ESTIMATES^(*)

Esteban García-Miralles

UNIVERSITY OF COPENHAGEN

Nezih Guner

CEMFI

Roberto Ramos

BANCO DE ESPAÑA

(*) We thank the editor, two anonymous referees, and seminar participants at Banco de España, the Workshop on Fiscal Policy and Microsimulation (Valencia), the Workshop on Microsimulation and Fiscal Policy (Banca d'Italia), the 43rd Simposio de la Asociación Española de Economía-Spanish Economic Association (SAEe, Madrid), and the Conference SERIEs – Banco de España “Taxes and Transfers” for comments and discussions. The views expressed in this paper are those of the authors and do not necessarily coincide with the views of the Banco de España or the Eurosystem. Guner acknowledges financial support from the Spanish Ministry of Economy and Competitiveness, Grant ECO2014-54401-P. Corresponding author: Roberto Ramos (roberto.ramos@bde.es).

The Working Paper Series seeks to disseminate original research in economics and finance. All papers have been anonymously refereed. By publishing these papers, the Banco de España aims to contribute to economic analysis and, in particular, to knowledge of the Spanish economy and its international environment.

The opinions and analyses in the Working Paper Series are the responsibility of the authors and, therefore, do not necessarily coincide with those of the Banco de España or the Eurosystem.

The Banco de España disseminates its main reports and most of its publications via the Internet at the following website: <http://www.bde.es>.

Reproduction for educational and non-commercial purposes is permitted provided that the source is acknowledged.

© BANCO DE ESPAÑA, Madrid, 2019

ISSN: 1579-8666 (on line)

Abstract

In this paper, we use administrative data on tax returns to characterize the distributions of before and after-tax income, tax liabilities, and tax credits in Spain for individuals and households. We use the most recent available data, 2015 for individuals and 2013 for households, but also discuss how the income distribution and taxes have changed since 2002. We also estimate effective tax functions that capture the underlying heterogeneity of the data in a parsimonious way. These parametric functions can be used to calculate after-tax incomes in surveys where this information is not directly available, and can also be used in quantitative work in macroeconomics and public finance.

Keywords: personal income tax, tax functions, income distribution.

JEL classification: E62, H24, H31.

Resumen

Este artículo utiliza datos administrativos sobre declaraciones del IRPF con objeto de caracterizar la distribución de la renta antes y después de impuestos, la distribución de la cuota del impuesto y la distribución de los beneficios fiscales, tanto para los individuos como para los hogares. El análisis se basa en los datos más recientes (año 2015 para los individuos y año 2013 para los hogares), aunque también se describe cómo ha evolucionado la distribución de la renta y el impuesto desde el año 2002. Asimismo, el artículo estima las funciones efectivas del impuesto sobre la renta, que son capaces de sintetizar la heterogeneidad de los datos de un modo sencillo. Estas funciones paramétricas pueden utilizarse para calcular la renta después de impuestos en encuestas que carecen de esta información, así como en modelos cuantitativos en macroeconomía y política fiscal.

Palabras clave: impuesto sobre la renta, funciones del impuesto, distribución de la renta.

Códigos JEL: E62, H24, H31.

1 Introduction

This paper makes two contributions. First, we use administrative data on tax returns to characterize the distributions of before and after-tax income, tax liabilities, and tax credits in Spain. We also calculate effective average and marginal tax rates that individuals and households face. We use the most recent available data, 2015 for individuals and 2013 for households, but also discuss how the income distribution and taxes have changed since 2002. Second, we provide estimates of effective tax functions. These functions map gross incomes of individuals or households into taxes that they pay, summarizing the complicated structure of taxes in easy-to-interpret and easy-to-use parametric forms. As such, they provide valuable inputs for quantitative studies of fiscal policy in models with heterogeneous agents.^{1, 2} Our approach follows Gouveia and Strauss (1994), Heathcote et al. (2017), and Guner et al. (2014), who estimate tax functions of the US personal income tax. Calonge and Conesa (2003) provide estimates of effective tax functions for Spain for the early 1990s.

Our data come from an administrative dataset containing a stratified random sample of tax returns, which includes a large set of fiscal and socio-demographic information that taxpayers provide in their returns.³ The dataset is representative of the population of Spanish taxpayers and income variables are not censored, which makes it ideal for our purposes. The dataset has both a cross-section and a panel component. Repeated cross-sections are available from 2002 to 2015, and they have a large sample size. The 2015 sample contains 2.7 million observations, about 14% of the population. It is not possible, however, to match household members, a husband and wife who file individual tax returns, in this data set. The panel dataset covers the period 1999-2013

¹Heathcote et al. (2009) and Krueger et al. (2016) provide recent reviews of this literature. For quantitative macro studies on the Spanish tax and transfer system, see among others, Rojas (2005), González and Pijoan-Mas (2006), Díaz-Giménez and Díaz-Saavedra (2009), Sánchez Martín and Sánchez Marcos (2010), Díaz-Giménez and Díaz-Saavedra (2017) and Guner et al. (2018).

²An alternative is the microsimulation approach, that simulates the incidence of tax reforms on a representative sample of taxpayers. Microsimulation models can be either non-behavioral or behavioral. Non-behavioral ones are accounting models that simply simulate the taxpayers' tax liabilities taking into account the design of the tax code (e.g. statutory rates, tax benefits, etc.). As such, they ignore the response of individuals to the tax changes, e.g. changes in the labor supply that might result from changes in taxes. While behavioral models rely on an accounting model, which computes net incomes under different choices and tax structures, they also contain behavioral microeconomic models that allow for such responses. The microsimulation approach can be used to estimate the consequences of very detailed tax reforms, since the accounting model provides an in-depth characterization of the tax code. However, this type of evaluations is usually carried out in partial equilibrium, since the exhaustive depiction of the tax system is difficult to integrate in macro models featuring general equilibrium. See Labeaga et al. (2008) for an evaluation of personal income tax reforms in Spain under a behavioral microsimulation approach, and Peichl (2016) for a discussion of the linking between microsimulation and computational general equilibrium models.

³The data covers 15 Spanish regions and 2 autonomous cities (Ceuta and Melilla). Two Spanish regions, the Basque Country and Navarre have their own independent tax collection authority and are not included in the dataset.

and has a smaller sample size, but allows us to link individual tax-filers from the same household, and compute taxes at the household level.⁴

The key takeaways from our analysis of the data are as follows: First, the data exhibits a significant degree of inequality, both in incomes and tax liabilities. The bottom (top) quintile of the income distribution accounts for about 4.6% (47.1%) of gross income, and the share accounted for by the top 1% is about 9.5%. A similar picture emerges for households. The top (bottom) quintiles account for 4.4% (49.9%) of gross income, and the top 1% accounts for 9.7% of gross income. The Gini coefficients for individual and household gross incomes are 0.42 and 0.45, respectively. Second, given the progressive tax system in Spain, tax liabilities are even more unequally distributed. The top quintile, which accounts for 47.1% of gross income, pays about 73.2% of taxes, while the share of the top 1% in total tax liabilities is 21%. As a result, the after-tax income distribution is more equal than the before-tax income distribution. The shares of the top quintile and top 1% of taxpayers in after-tax individual income decline to 42.8% and 7.6%, respectively. The Gini coefficients for after-tax income are 0.38 for individuals and 0.40 and households. Our analysis also shows that the Gini coefficients for both before and after-tax incomes have been fairly stable since 2002. Other measures of income inequality, such as 90-to-10 and 50-to-10 income ratios, however, did increase since the 2008 crisis. Our estimates of the household income distribution are quite similar to the ones we obtain from the Bank of Spain's Survey of Household Finances (*Encuesta Financiera de las Familias* or the EFF).⁵

Third, labor income constitutes the most important source of total income for most households. Even at the top quintile, it represents about 87.1% of total income. The capital and self-employment income, on the other hand, account for a more significant share of total income for the top 1% of taxpayers. About 24.1% and 12.7% of their total income comes from capital and self-employment income, respectively. Interestingly, capital and self-employment income also account for a large share of income at the lower end of the income distribution. Fourth, we find that higher income quintiles enjoy larger tax deductions, which lower their taxable income, and larger tax credits, which lower their tax liabilities. The top quintile, for example, accounts for 25.2% of all deductions and 28% of all credits. The same numbers for the bottom quintile are 16.1% and 4.9%, respectively. This reflects both the fact that some benefits, such as deductions due to social security contributions or due to contributions to private pension plans, are enjoyed more by richer households, and the fact that poorer households are more likely to reach quickly zero tax liabilities due to deductions and credits.

Finally, there is also a large dispersion in *effective* average tax rates that individuals face. About 37% of all taxpayers do not pay any taxes. Indeed, effective rates are close to zero in the

⁴Based on the same data, Haugh and Martínez-Toledano (2017) analyze the income distribution, taxes and tax benefits for the period 2002-2011. They assess differences in such distributions by gender and province, and focus on changes before and after the economic crisis.

⁵Anghel et al. (2018) provide an analysis of changes in income, consumption and wealth distribution in Spain in recent years.

two lowest quintiles. The top quintile faces an average effective tax rate of 19.0%, while the tax rate for the top 1% is 30.6%.

The tax system in Spain taxes the so-called general income, which mainly consists of labor and self-employment income, and savings income, which mainly consists of capital income, at different rates. Taxes on general income are higher and more progressive than taxes on savings income.⁶ Hence, to each of these income categories certain deductions are applied and then the corresponding tax liabilities are calculated. Tax liabilities corresponding to these two categories are then summed, and tax credits are applied to the total tax liabilities to figure out what the taxpayer owes to the state. Given this structure, for the estimation of the effective tax function, we follow two different approaches. First, we estimate one single function for the final tax liabilities as a function of gross income for each year between 2002 and 2015. We focus on two different specifications: one proposed by Benabou (2002) and Heathcote, Storesletten, and Violante (2017), which we call the *HSV* specification, and the *GS* specification, used by Gouveia and Strauss (1994). In our estimation we account for the fact that low incomes are subject to zero effective tax rates, and estimate an income threshold below which tax liabilities are zero. In the second approach, we estimate three different functions: a function that relates general income to general tax rates; a second function that links the savings income to the savings tax rates; and a third function that accounts for the amount of tax credits as a function of total gross income. We show that both approaches result in tax functions that accurately estimate both the level and the distribution of the tax liabilities observed in the data. As an illustration of the use of these tax functions, we apply them to the EFF survey data and calculate after-tax incomes for each household, a variable not available in the original survey.

The rest of the paper is organized as follows. Section 2 describes the Spanish Personal Income Tax. Section 3 describes the dataset and lays out the definitions and sample restrictions. Section 4 presents the basic facts of the income and tax distributions. Section 5 presents the parametric estimates of the tax functions. Section 6 presents the basic facts of the after-tax income distributions for administrative and survey data. Section 7 concludes.

2 The Spanish Personal Income Tax

2.1 Overview

The Spanish Personal Income Tax (PIT) or *Impuesto sobre la Renta de las Personas Físicas (IRPF)*, taxes the income of Spanish residents.⁷ Table 1 documents different sources of tax revenue for Spain, Euro Area and the OECD countries in 2015. The total tax collection with the PIT is

⁶López-Laborda et al. (2018) discusses how this dual tax system creates incentives for the taxpayers to shift their income base from labor to capital.

⁷Income subject to the PIT corresponds to worldwide income, although a number of bilateral agreements eliminates double taxation.

TABLE 1
DISTRIBUTION OF TAX REVENUES IN 2015 (% OF GDP)

	Tax Revenue	Personal Income Tax	Social Security Contributions	Value Added Taxes	Other Taxes	$\frac{\text{PIT}}{\text{Tax Revenue}}$
	(1)	(2)	(3)	(4)	(5)	(6)
Spain	33.8%	7.2%	11.4%	6.4%	8.8%	21.3%
Euro Area 11	38.8%	9.4%	12.2%	7.0%	10.2%	24.3%
OECD	34.0%	8.5%	8.9%	6.7%	9.8%	24.5%

Source: OECD Tax Statistics (<http://dx.doi.org/10.1787/data-00262-en>).

Notes: The Personal Income Tax column corresponds to the category 1100 Taxes on income, profits and capital gains of individuals, of the OECD classification of taxes. The Euro-Area and the OECD averages exclude Spain.

7.2% of the GDP and 21% of total tax revenue in Spain. It represents the second largest source of tax revenue after the social security contributions. As a fraction of GDP, Spain collects around 2.2 and 1.3 percentage points less revenue from the PIT than the Euro Area and the OECD averages, respectively.⁸

The tax is withheld at source and each year, between April and June, taxpayers must file a tax return based on the previous calendar year's total income. In 2015, all taxpayers with a labor income above €22,000, or with a capital income (excluding income from real-estate) above €1,600, or with a real-estate income above €1,000, or with any income from self-employment had to file a tax return. Many taxpayers below the labor income threshold, around 81% of them in 2015, still choose to file a tax return, since they are likely to obtain a refund due to tax credits. Tax returns can be filed single or jointly. Single tax returns are filed at the individual level, whereas joint tax returns can be filed by spouses or single-parent families with at least one dependent child.

Figure 1 provides a simplified version of the 2015 tax code. Income subject to the tax can be of several types: labor income, capital income (both from financial assets and real-estate) and self-employment income. From these *gross income* sources, a set of deductible expenses can be subtracted, which include, among others, social security contributions paid by the employee, a deduction for earning any labor income, and business expenses associated to self-employment.⁹ The result of this subtraction results in *adjusted gross income*.

Adjusted gross income is then grouped into two categories, which are subsequently taxed at different rates. The first type of income is called *general income* and includes labor income, self-employment income and some forms of capital income (mainly, income from real state).¹⁰ The

⁸See Hernández de Cos and López-Rodríguez (2014) and López-Rodríguez and García Ciria (2018) for a description of income and social security taxes in Spain in the context of the European Union and the OECD.

⁹There are two deductions for earning labor income. First, all taxpayers are eligible for a €2,000 deduction. Second, an additional deduction of up to €3,700 is given to taxpayers whose labor income is below €14,450. These quantities are further increased for some groups of taxpayers, such as disabled workers, or unemployed who had moved to a different location in order to start a new job.

¹⁰Other forms of capital income that are in general income include incomes that come from the participation in common property regimes and other civil associations, such as unsettled estates or communities of property owners.

(e.g. realized capital gains, dividend payments, and interest income).¹¹ To each type of income a set of tax deductions are applied. Deductions that can be applied to general income include a tax deduction for couples filing jointly and contributions to private pension plans.¹² If the total deductions exceed the general income, taxpayers can apply some of the remaining deductions to the savings income. The subtraction of these deductions from general and savings income results in concepts called *general taxable income* and *savings taxable income*.

General and savings taxable income are then taxed according to different tax schedules. The tax schedules are split into a state and a region portion, since around half of the tax revenue is transferred to the regions, which are entitled to design their tax schedules and introduce their own tax benefits.¹³ In 2015 the state general tax schedule consisted of 5 tax brackets and a top marginal rate of 22.5%. The regional general tax schedule, which is applied on top of the state one, varies across regions. For example, the tax schedule in Catalonia (the largest Spanish region in terms of GDP in 2015) consisted of 6 tax brackets and a top marginal tax rate of 25.5%, whereas that of the Community of Madrid (the second largest region) has 5 tax brackets and a top marginal rate of 21.0%. Therefore, taxpayers in Catalonia faced a top marginal rate of 48% (22.5% + 25.5%), while Madrid taxpayers were subject to a top marginal rate of 43.5% (22.5% + 21.0%). The savings tax schedule is much less progressive. In 2015 the state portion consisted of 3 brackets and a top marginal rate of 11.5%, whereas the region portion, which did not differ across regions, comprised 3 brackets and a top rate of 12.0%. Figure 2 shows the tax schedules in the two selected regions in 2015.

Gross tax liabilities, which are calculated by applying state and region tax schedules to general and savings taxable income, are then reduced by a series of tax credits. First, a family allowance is subtracted from the gross tax liabilities from general taxable income. The amount of the family allowance depends on the characteristics of the taxpayer and their family, such as age, number of dependent children, number of dependent parents, and disability status of the taxpayer and other family members.¹⁴ The actual amount that is subtracted from gross tax liabilities is calculated by applying the general tax schedules to the family allowance. For example, if the total family allowance is €5,500, which is below the first income threshold in panel A of Figure 2, then tax

¹¹In 2015 savings income covered slightly more than 60% of total capital income.

¹²In 2015, the deduction on couples filing jointly amounted to €3,400, while the limit on contributions to private pension plans was set to €8,000.

¹³In practice, the Spanish system of regional financing is complex, see de la Fuente (2010) for a detailed description. Roughly speaking, regions keep 25% of their tax collection and either receive or contribute money in net terms from two funds aiming at ensuring sufficient financing for each region and a homogenous provision of public services deemed essential, such as health and education. Regions can also raise money from financial markets by issuing debt.

¹⁴In 2015, this allowance was €5,550 for the taxpayer (€6,700 and €6,950 for taxpayers older than 65 and 75, respectively), plus €2,400 for the first child, €2,700 for the second, €4,000 for the third, etc; plus €1,150 for each dependent parent older than 65, and €1,400 for each dependent parent older than 75; plus €3,000 for each disabled member of the household (€9,000 euro for severe disabilities). Furthermore, the allowance for children is increased if they are less than 3 years old. Also note that regions can modify these amounts.

FIGURE 1
STRUCTURE OF THE SPANISH PERSONAL INCOME TAX (2015)

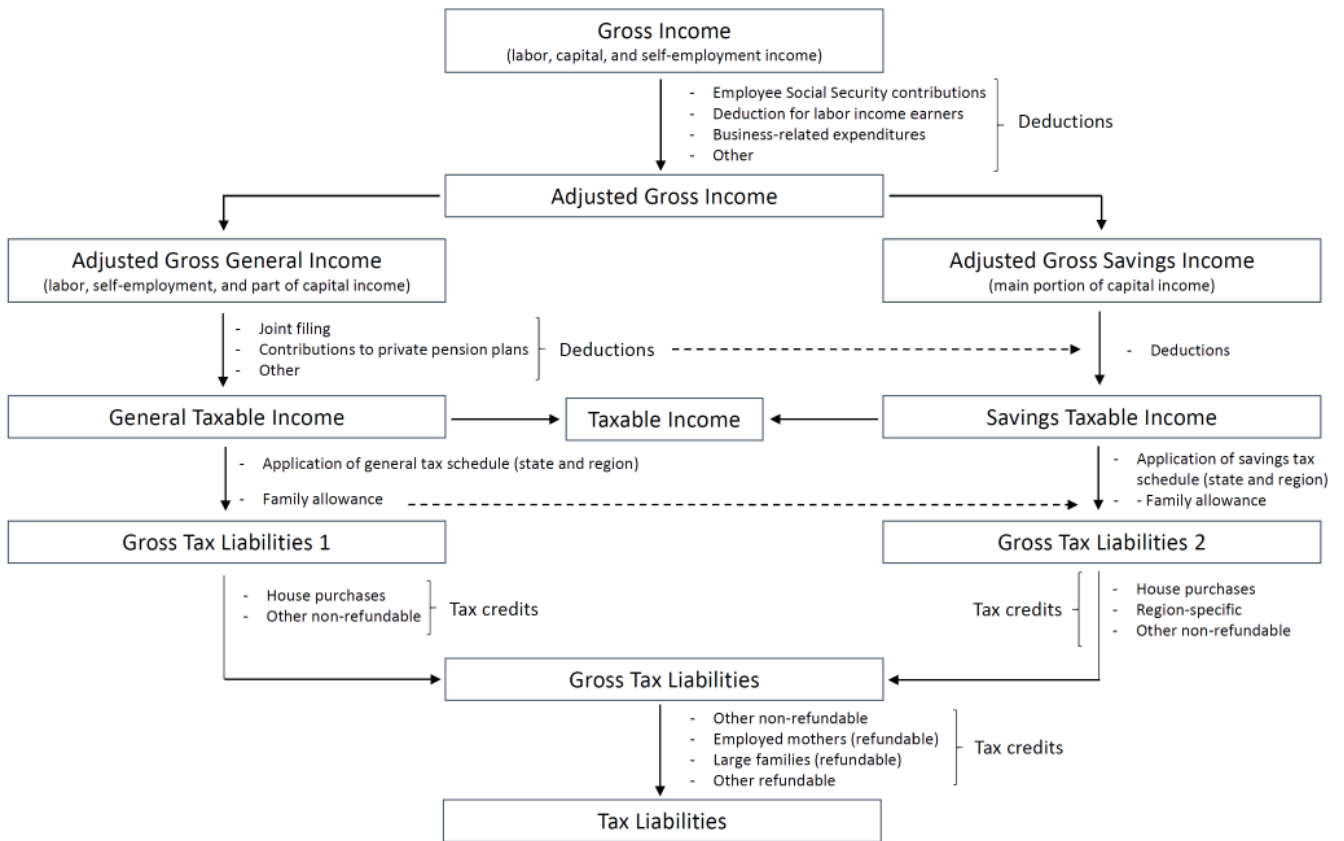
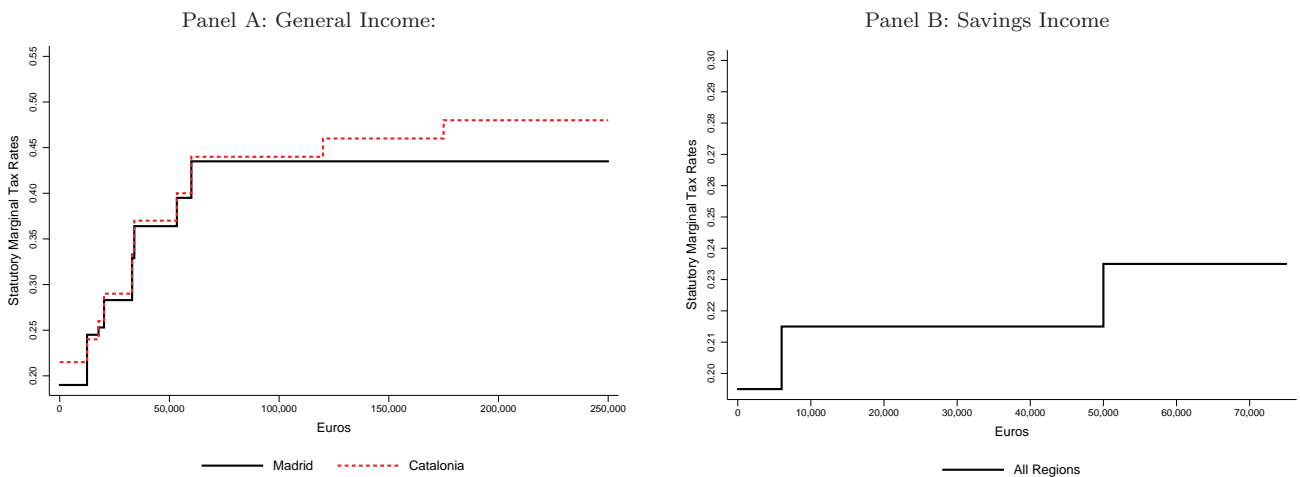


FIGURE 2
STATUTORY MARGINAL TAX RATES (2015)



Notes: This figure shows the statutory marginal tax rates of the personal income tax in 2015 for residents in Catalonia and Madrid. Panel A displays the rates applied to general income. Panel B shows the tax rates of savings income.

liabilities are reduced by $\text{€}5,500 \times 0.095 = \text{€}522.5$. If the general taxable income of a taxpayer is less than their family allowance, then the extra amount of the family allowance can be used to reduce the gross tax liabilities from savings taxable income.

After subtracting the family allowance, the tax liabilities from the state general income and state savings income are pooled together. Similarly, the region tax liabilities (from general and savings income) are also added up. To these two types of tax liabilities a set of *non-refundable* tax credits are applied. Non-refundable tax credits include part of mortgage payments (if the house was purchased before 2013) and an extended set of regional and state tax credits.¹⁵ Finally, tax liabilities are further reduced by a set of *refundable* tax credits. In 2015, such credits were provided for employed mothers with children below 3 years old, taxpayers with disabled parents or children, single-parent families with at least two children, and large families (those with 3 or more children, or 2 children when at least one of them is disabled). The amount of the tax credit given to large families is limited to $\text{€}2,400$, while the rest cannot be larger than $\text{€}1,200$.¹⁶

In order to summarize the structure of taxes, let GI_j for $j = l, k, e$ be the gross income from labor (l), capital (k) and self-employment (e). Adjusted gross income (AGI_j) is obtained by subtracting deductions (D_j) from the gross income. Adjusted gross income from labor, capital and self-employment are then grouped together under two categories: general income (g) and savings income (s), i.e.,

$$GI_j - D_j = AGI_j \text{ for } j = l, k, e,$$

and

$$AGI = \sum_j AGI_j = AGI_g + AGI_s.$$

Then another set of deductions (OD_g) are subtracted from AGI_g to obtain general taxable income:

$$TI_g = AGI_g - OD_g.$$

The family allowance (FA) is calculated as a function of the taxpayer and their family characteristics. The allowance pertaining to the general income (FA_g) is computed as:

$$FA_g = \begin{cases} \min(TI_g, FA) & \text{if } TI_g > 0 \\ 0, & \text{otherwise} \end{cases}.$$

¹⁵The region-specific tax credits, which can be means-tested, include credits for taking care of disabled or elderly, births, adoptions, large families, school expenses, donations, housing expenses, etc. Other state tax credits are granted to, among others, charity donations and renters earning income below a certain threshold. The state tax credit for renters has been phased out since 2015.

¹⁶The most important refundable credit is the one provided to employed mothers with children below 3. In 2015, close to 750,000 women received it, which represented close to 4% of the total number of tax returns, being granted around $\text{€}935$ on average. The refundable tax credit granted to large families comes next, which accrued to close to 500,000 taxpayers (2.6% of the total) and amounted to $\text{€}945$ on average.

The gross tax liabilities that corresponds to TI_g are then calculated as:

$$GTL_g = \tau_g(TI_g) - \tau_g(FA_g),$$

where τ_g is the general tax schedule.

In order to obtain the gross tax liabilities for savings income (GTL_s), the savings adjusted gross income (AGI_s) is reduced by unused portions of OD_g (denoted by OD_s) to obtain the savings taxable income ($TI_s = AGI_s - OD_s$).¹⁷ The family allowance pertaining to savings income (FA_s) is computed as:

$$FA_s = \min(TI_s, FA - FA_g).$$

Then, the tax liabilities for savings income are calculated as follows:

$$GTL_s = \tau_s(TI_s) - \tau_s(FA_s),$$

where τ_s is the savings tax schedule.

Finally, the two gross tax liabilities are summed and nonrefundable and refundable tax credits (NTC and TC) are subtracted to obtain tax liabilities:

$$TL = \min(0, GTL_g + GTL_s - NTC) - TC.$$

2.2 Recent Reforms of the Personal Income Tax (2002-2015)

The Spanish PIT has undergone several changes during recent years. In general, the taxes are reduced and increased in line with the economic expansions and downturns. The economic expansion of the early 2000s resulted in several tax cuts between 2003 and 2007. Furthermore, right at the start of the economic crisis in 2008, additional cuts were implemented in order to stimulate a slowing economy. In contrast, after 2008, the sharp fall in the GDP and the subsequent deterioration of the budget balance led to sizable tax increases between 2010 and 2012. Once again, following the recent economic recovery, significant tax cuts took place in 2015.

The first major reform of the personal income tax during the 21st century was in 2003. It involved a reduction in the number of tax brackets (from 6 to 5) and tax rates (the top marginal tax rate was reduced from 48% to 45%). There was also an increase in the family allowance (e.g. for a taxpayer with 2 children, by about €600) and a tax credit of €1,200 on employed mothers with at least one child below age 3 was introduced. In 2007 the government implemented a big reform, which consisted of a further reduction of tax brackets (from 5 to 4) and tax rates (the top marginal tax rates were reduced from 45% to 43%). The family allowance was also increased (e.g. for a taxpayer with 2 children, one of them below age 3, by close to €5,000) and was redefined as a general income tax credit instead of a deduction. Three other important changes were a raise in savings tax rates (from 15% to 18%), a reshuffling of tax bases, which moved many capital

¹⁷In practice, only certain elements of OD_n can be used in OD_s .

income items to the savings schedule, and the introduction of a tax credit of €2,500 on births and adoptions. In 2008, a €400 tax credit for labor and self-employment income earners was introduced in order to spur private expenditure. Furthermore, a non-refundable tax credit for house renters was also implemented.

Between 2010 and 2012, the successive governments increased taxes or reduced deductions and credits in the context of the economic crisis and the deterioration of the budget balance. In 2010 the €400 tax benefit was eliminated and the savings tax rates were increased (from 18% to 21% for taxpayers earning more than €6,000 of savings income). In 2011 the tax credit on births and adoptions was eliminated and the top marginal tax rates were increased from 43% to a range of 44.9% to 49%, depending on the region. In 2012 the government approved a significant increase of marginal rates, which affected the entire tax schedule (for instance, the top marginal rates were increased by 7 percentage points). This tax increase, which was initially intended to last for two years, was later extended until 2014. Furthermore, a deduction associated to house purchases was eliminated in 2013.

After the crisis, the government adopted a big reform. It consisted in a reduction of tax brackets and tax rates, which overturned partly the 2012 tax raise, and resulted in the tax system outlined in Figure 2. Also, the family allowance was increased, and a set of new refundable tax credits that depend on family characteristics were introduced (such as the one accruing to large families).

3 Data

3.1 Micro data on Tax Returns (2002-2015)

We use an administrative dataset containing a (stratified) random sample of tax returns, which includes almost the complete set of fiscal and socio-demographic information taxpayers provide in their returns. Hence, the dataset provides a very detailed account of income from different sources, tax benefits, tax liabilities and household characteristics (number of dependent relatives, disability, location, etc.). The income and taxes paid are not censored either at the bottom or at the top of the distribution.

The unit of observation in the dataset is a tax return, which can be of two types: single or joint. As mentioned, single tax returns are filed at the individual level, whereas joint tax returns represent two spouses filing together, or single-parent families with at least one child. In joint tax returns incomes are pooled together and taxpayers are entitled to an additional tax deduction on top of those accruing to single filings (see Figure 1). Other than this additional deduction, the computation of tax liabilities under both types of filing is almost identical. The filing status is chosen by the taxpayer. In general, joint tax returns benefit couples in which one partner earns little or no income, as well as single-parent families with dependent children.¹⁸

¹⁸In 2015, single tax returns accounted for close to 80% of the total, while the remaining were joint tax returns.

TABLE 2
ACCURACY OF THE 2015
CROSS-SECTION DATA (€BILLION)

	Sample Aggregate	Population Aggregate	Difference
	(1)	(2)	(3)
Number of Taxpayers (million)	19.5	19.5	0.0%
Gross Labor Income	394.1	393.3	0.2%
Gross Capital Income	46.3	46.6	-0.8%
Gross Self-Employment Income	25.8	26.5	-2.6%
Taxable Income	374.7	375.0	-0.1%
Tax Liabilities	65.5	65.6	-0.2%

Notes: The source of the population aggregates is the Spanish Tax Agency (*Estadísticas de los declarantes del Impuesto sobre la Renta de las Personas Físicas (IRPF)*), available at <https://goo.gl/yAhF63>. The definitions of the variables are described in Section 3.2. Gross capital income excludes some small items for which no population aggregates are reported.

The dataset has both a cross-section and panel component.¹⁹ Repeated cross-sections are available from 2002 to 2015, and they have a large sample size. The 2015 cross-section, for example, contains 2.7 million observations, which is around 14% of the universe of tax returns. For 2007-2010 and 2002-2006 periods, the sample size equals around 10% and 5% of the population, respectively. In these repeated cross-sections, it is not possible to match household members, e.g. to match a husband and wife who file two independent single tax returns. As a result, it is not possible to study taxes at the household level.

The panel dataset covers the period 1999-2013 and has a smaller sample size (around 3.2% of the universe of taxpayers in 2013). The main advantage of the panel is that it is possible to match spouses who file single tax returns. Therefore, it is possible to compute total taxes paid by households. Furthermore, computing incomes and taxes at the household level allows us to compare the household income distribution from tax data with that obtained from survey data, such as the EFF. Below we use the cross-section and the panel data to describe and estimate the tax functions for individual taxpayers and households, respectively.

Table 2 provides a comparison between the cross-section sample aggregates in 2015 and their population. The data provides a very accurate representation of income and tax liabilities of the 19.5 million tax return filers, the differences being less than 1% on the selected items, except for gross income reported by the self-employed, for which the discrepancy is larger.

¹⁹The datasets are named Muestra IRPF IEF-AEAT (Declarantes) and Panel IRPF 1999/2013 IEF-AEAT (Declarantes). They are administered by the Instituto de Estudios Fiscales (<http://www.ief.es/>), a research institute within the Ministry of Finance and Civil Service. A detailed description (in Spanish) and some statistics are provided every year in the working paper series of the Instituto de Estudios Fiscales (<https://goo.gl/1Nyota>). For example, see Pérez López et al. (2018) for a description of the 2015 cross-section wave.

3.2 Definitions and Sample Restrictions

In this section we explain in detail the definition of the main variables used in the paper. Specifically, we describe the different income types we account for, the characterization of tax liabilities and tax benefits, and the computation of effective average and marginal tax rates.

We use three income definitions. First, gross income is the sum of labor, capital, and self-employment income. Labor income comprises benefits in cash and in kind granted to individuals as employees. Capital income includes both financial income (interests, dividends, capital gains, etc.) and real-estate income. Self-employment income corresponds to the earnings of the self-employed associated to their businesses.²⁰ It is important to note that gross self-employment income and part of gross capital income are reported in the dataset net of some deductible expenses and tax deductions. Since we do not observe these deductions, what we call gross income is less than actual pre-tax income for these categories. This can be particularly important for the self-employed, as such deductions can be relatively high, which may lead to an underestimation of their income. For this reason, we also provide a second definition of income, adjusted gross income, where all income categories are net of deductible expenses. The third income category is taxable income, which corresponds to income subject to the application of the (general and savings) tax schedules. Note that we define also the general and savings taxable incomes, to which the corresponding general and savings tax schedules are applied.

Tax benefits can be of two types: tax deductions and tax credits. Tax deductions are amounts subtracted directly from the tax base, before the application of the tax schedules. Therefore, total tax deductions are equal to gross income minus taxable income. Tax credits, on the other hand, are amounts subtracted from the tax liabilities. Hence, they represent the difference between the amount that is calculated by the application of the tax schedule to taxable income and the final tax liabilities. Tax liabilities correspond to the amount that the taxpayer effectively has to pay, i.e. they are net of all, refundable or non-refundable, tax credits. As a result, they can be negative.

The average effective tax rates are computed as tax liabilities over gross income.²¹ We also define the average effective general tax rate as tax liabilities resulting from the application of the general tax schedule net of the family allowance (the box Gross Tax Liabilities 1 in Figure 1) over general income. We subtract the family allowance because for many (low income) taxpayers, this is equal to the general taxable income, hence by subtracting it from the numerator we avoid an artificial overestimation of the general tax rate (for these taxpayers the resulting average general tax

²⁰It also includes any income of employees (wage and salary earners) who set up an economic activity to generate income.

²¹If the tax liabilities are non-positive, then we set the tax rate to zero. Note that we could also compute tax rates as the ratio of tax liabilities to adjusted gross income. We favor the broader definition of income to compute average tax rates and total tax deductions.

rate is zero). Average savings tax rates are computed similarly.²² Finally, the statutory marginal tax rates for a particular income level (or income window) are calculated as the average of the marginal rates of general and savings income, weighted by the corresponding income shares. We also calculate effective marginal tax rates as the change in tax liabilities that result from marginal changes in gross income.²³

In all calculations we restrict the sample to taxpayers with positive total gross income, non-negative gross income from different sources (labor, capital and self-employment), and average tax rates below the maximum statutory marginal tax rate. We do not restrict the sample by the age of the taxpayer. These restrictions only affect about 3% of all taxpayers in the sample.²⁴

3.3 Survey of Household Finances

As mentioned above, we compare the estimated household income distribution from the tax return data with that obtained from the Survey of Household Finances. The EFF is a survey conducted by the Bank of Spain that collects information on socio-economic characteristics, income, assets, debts and spending of around 6,000 households in each wave. Moreover, the survey oversamples high-wealth households, in order to allow for a sufficient number of observations to study the financial behavior at the top of the wealth distribution and to accurately measure aggregate wealth. The EFF is undertaken every three years, the first wave was in 2002 and the last one in 2014. Each wave accounts for annual income pertaining to the previous year. A detailed description of the survey can be found in Bover et al. (2018).

Note that households in the tax data are defined as the taxpayer and their spouse, i.e. excluding other members of the household filing a tax return. Therefore, in order to compare the income aggregates between the tax and the survey data, we construct two household definitions in the EFF. The first is denoted “fiscal household” and adds up the gross income of the household’s reference person and their spouse. Note that the EFF provides information for each household member on labor and self-employment income items. The capital income items are, however,

²²According to the 2015 tax code, the boxes (in *Modelo 100*) corresponding to each definition are the following. Gross income: 10 (labor) + 33 + 43 + 70 + 71 + 212 + 213 + 214 + 215 + 216 + 235 + 240 + 244 + 250 + 366 + 370 (capital) + 125 + 150 + 180 (self-employment). Adjusted gross income: 22 (labor) + 37 + 47 + 70 + 71 + 212 + 213 + 214 + 215 + 216 + 235 + 240 + 244 + 250 + 366 - 376 - 379 - 378 + 370 - 382 - 383 - 384 - 385 - 387 - 388 - 389 - 390 (capital) + 125 + 150 + 180 (self-employment). Taxable income: 440 (general) + 445 (savings). General income: 10 + 43 + 70 + 71 + 125 + 150 + 180 + 212 + 215 + 216 + 235 + 240 + 244 + 250 + 366. Savings income: 33 + 213 + 214 + 370. Tax liabilities: 532 - 546 - 557 - 572 - 588 - 590. Average effective general tax rate: $\frac{476 + 477}{\text{general income}}$. Average effective savings tax rate: $\frac{484 + 485}{\text{savings income}}$.

²³Specifically, we follow Guner et al. (2014), Section 6. For each income level y_0 , represented as a ratio of income over mean income, the marginal tax rate is approximated as the average of the variation in tax liabilities when income increases to $y_0 + \Delta y$ and when income decreases to $y_0 - \Delta y$, with $\Delta y = 0.4$. Below we compute effective marginal rates from income levels ranging 0.2 to 9.8 in steps of 0.4.

²⁴Table A.1 in the online appendix shows that the average income and other characteristics of the restricted sample do not differ significantly from those of the universe of taxpayers.

reported for the whole household. We assume that all capital income belongs to the household's reference person (even if a particular asset could belong, e.g., to an elderly living with the reference person).²⁵ Note also that we classify the income sources provided by the EFF so as to mimic the labor, capital and self-employment groups defined in the tax data.²⁶ Second, we construct a larger household definition encompassing all the household members, which we denote by the term “whole household”.

As with the tax data, we restrict the sample to households earning positive gross income and non-negative gross income from all sources (labor, capital and self-employment).²⁷ This amounts to dropping around 2% of the households.

4 Basic Facts of the Income and Tax Distributions

In this section we report basic facts on income, tax liabilities, and tax benefits for samples of individuals in 2015 and households in 2013. Moreover, we compare the results for the households with those obtained from the EFF.

4.1 Income Distribution

4.1.1 Individuals

Table 3 summarizes how different notions of income are distributed among individuals in 2015. The inequality in gross incomes is significant. The top quintile accounts for about 47.1% of total gross income, while the bottom quintile's share is only 4.6%, a ratio of 10 to 1. The income share of the top 1%, a popular measure of income inequality, is about 9.5%. This is lower than other big euro area countries, such as Germany (11.1%) and France (10.8%), and it is much smaller than what we observe in Anglo-Saxon economies (12.8% in the UK and 20.2% in the US). Nevertheless, it is higher than the top 1% income share in Scandinavian countries (for example, Sweden is 8.8% and Norway is 8.5%) and in Italy (7.3%).²⁸

²⁵Note that since we focus on aggregate household income, it is irrelevant for two-person households to assign capital income to the reference person, their partner, or to split it between the two.

²⁶According to the 2014 EFF wave, we define gross income as: $\sum_i (p6.64.i + p6.66.i + p6.68.i + p6.70 + p6.74b.i + p6.74.i) + p6.75d1 + p6.75d3 + p6.75d4$ (labor) + $\sum_i p6.72.i$ (self-employment) + $p7.2 + p7.10 + p7.12 + p7.12a + p7.14 + p7.4a + p7.4b + p7.6a + p7.6b + p7.8a + p7.8b + p6.76b + p6.75f$ (capital), where i indexes each household member (the reference person and their spouse in two-person households and the former in one-person households).

²⁷Notice that under the two household definitions we impose this rule on the added income of the reference person and their spouse. Additionally, for the case of “whole households” we apply the restriction on each household member. Hence, if he/she does not fulfill the restriction, it is excluded from the household.

²⁸The numbers are from the World Inequality Database (<https://wid.world/>) for the year 2015, except for France and the US, whose data pertain to 2014. For an analysis of top incomes in Spain, see Alvaredo and Saez (2014). Martínez-Toledano (2017) provides estimates on the concentration of wealth in Spain.

TABLE 3
DISTRIBUTION OF INDIVIDUAL INCOME AND INCOME SOURCES (2015)

Quantiles	Income Definition			Gross Income Sources		
	Gross Income	Adjusted Gross Income	Taxable Income	Labor Income	Capital Income	Self-employment Income
	(1)	(2)	(3)	(4)	(5)	(6)
<i>Bottom</i>						
1%	0.0%	0.0%	0.0%	0.0%	0.0%	0.0%
1-5%	0.3%	0.0%	0.0%	0.2%	0.9%	0.8%
5-10%	1.0%	0.3%	0.3%	0.9%	1.4%	2.2%
<i>Quintiles</i>						
1st (bottom 20%)	4.6%	2.0%	2.0%	4.2%	5.4%	8.1%
2nd (20-40%)	10.2%	7.9%	7.9%	10.3%	7.8%	13.5%
3rd (40-60%)	15.5%	15.6%	15.3%	16.2%	10.0%	14.7%
4th (60-80%)	22.7%	23.6%	23.4%	24.4%	12.9%	14.5%
5th (80-100%)	47.1%	51.0%	51.4%	44.9%	63.9%	49.3%
<i>Top</i>						
90-95%	10.1%	10.8%	10.8%	10.5%	8.2%	7.4%
95-99%	11.9%	13.0%	13.1%	11.6%	13.8%	14.0%
1%	9.5%	10.7%	11.1%	6.0%	32.7%	19.7%
<i>Other statistics</i>						
Gini coefficient	0.42	0.49	0.50	0.45	0.89	0.96
Var - log income	1.14	3.05	2.97	0.82	8.33	3.62
P90/P10	7.31	19.20	19.19	7.02	1256.43	112.33
P50/P10	3.15	7.81	7.66	3.11	96.67	21.59
P90/P50	2.32	2.46	2.51	2.26	13.00	5.20

Notes: This table displays the distribution of gross income, adjusted gross income and taxable income, as well as the distribution of gross income sources (labor, capital, and self-employment) for the sample of 2015 individuals. The Gini coefficient in columns (4) to (6) are computed including the observations with zero income, while the percentile ratios of those columns *exclude* them.

When we move to adjusted and taxable incomes in Table 3, the share of higher quintiles increases. For example, the share of income accounted for the top 20% increases from 47.1% of gross income, to 51.0% of adjusted gross income and 51.4% of taxable income. Likewise, both the income share of the top 1% and the Gini coefficient increase as we move from gross to taxable income. This is not surprising, since most of the taxes are paid by richer households. Indeed, for many taxpayers at the bottom quintile (about 20% of them), taxable income becomes zero once deductions are applied to their gross income.

Finally, columns (4) to (6) of Table 3 show the distribution of income from different income sources. The capital and self-employment income are much more unequally distributed than the labor income. The capital income renders a higher degree of concentration at the bottom and top quintiles, when compared to gross income. For example, the bottom 20% accounts for just 4.6% of gross income, while it accumulates 5.4% of capital income; the top 1% accumulating 9.5% and 32.7%, respectively. Self-employment income is also concentrated at the very top, but the lower end of the income distribution accumulates a substantial amount as well.

TABLE 4
INDIVIDUAL GROSS INCOME CUTOFFS
AND AVERAGE INCOME LEVELS (€, 2015)

Quantiles	Cutoffs		Average Income		
	Gross Income	Gross Income	Labor Income	Capital Income	Self-employment Income
	(1)	(2)	(3)	(4)	(5)
<i>Bottom</i>					
1%	0	107	17	84	7
1-5%	310	1,809	971	546	292
5-10%	3,401	4,825	3,522	662	642
<i>Quintiles</i>					
1st (bottom 20%)	0	5,543	4,312	651	579
2nd (20-40%)	9,508	12,388	10,483	937	968
3rd (40-60%)	15,383	18,806	16,553	1,202	1,052
4th (60-80%)	22,673	27,581	24,983	1,560	1,038
5th (80-100%)	33,735	57,143	45,907	7,698	3,538
<i>Top</i>					
90-95%	43,410	48,960	42,900	3,929	2,131
95-99%	56,971	72,402	59,065	8,319	5,018
1%	105,473	229,741	122,572	78,899	28,270

Notes: This table displays the gross income cutoffs as well as the average of gross income sources across the gross income distribution according to the 2015 sample of taxpayers.

Table 4 presents another look at the income distribution in the data. For gross income, it reports the income cutoffs for different percentiles of the distribution (column 1). It also reports average gross incomes and average incomes from different sources at different points of the income distribution (columns 2 to 5). It is worth noticing that there is only a small number of taxpayers that report relatively large incomes in their tax returns, which would put them in higher income brackets (see Figure 2). Average individual gross income in the data is about €24,000. Hence, 80% of households report gross incomes that are below the mean gross income. Indeed, 99% of taxpayers report total gross income below €105,000 (about 5 times the mean income). Also, columns (2) to (5) show that average income levels across income sources are low. For instance, the top 1% earns on average slightly above €120,000 of labor income, while average self-employment income of the top 95-99% of taxpayers is just €5,000.^{29, 30}

In Table 5 we decompose the sources of income across the income distribution. As columns (1) to (3) show, labor income is by far the largest source of income. Its importance increases monotonically from quintiles 1 to 4, where it represents between 80% and 90% of total income. In

²⁹Note that self-employment income is net of deductible expenses associated to the business activity, see Section 3.2. As a result, the figures might underestimate the actual pre-tax income from self-employment.

³⁰As we document in Tables A.2 and A.3 in online Appendix A, Tables 3 and 4 change very slightly if we restrict the sample to ages 16-64, and, as a result, eliminate retired taxpayers who might potentially have low incomes. The threshold for the top 1% of labor income earners, for example, increases to €132,948.

TABLE 5
INDIVIDUAL GROSS INCOME SOURCES (2015)

Quantiles	Labor, Capital & Self-Employment			General & Savings	
	Labor Income	Capital Income	Self- employment Income	General Income	Savings Income
	(1)	(2)	(3)	(4)	(5)
<i>Bottom</i>					
1%	10.2%	85.6%	4.3%	43.1%	57.0%
1-5%	47.7%	37.3%	15.0%	85.5%	14.5%
5-10%	72.3%	14.1%	13.6%	94.7%	5.3%
<i>Quintiles</i>					
1st (bottom 20%)	68.6%	20.1%	11.3%	95.1%	4.9%
2nd (20-40%)	84.6%	7.7%	7.8%	97.0%	3.0%
3rd (40-60%)	88.0%	6.4%	5.6%	97.4%	2.6%
4th (60-80%)	90.6%	5.7%	3.8%	97.4%	2.6%
5th (80-100%)	87.1%	8.4%	4.6%	90.2%	9.8%
<i>Top</i>					
90-95%	87.7%	8.0%	4.3%	95.5%	4.5%
95-99%	82.1%	11.2%	6.7%	92.9%	7.1%
1%	63.2%	24.1%	12.7%	69.9%	30.1%

Notes: This table shows the decomposition of gross income over income sources across the gross income distribution. Columns (1) to (3) depict the decomposition between labor, capital and self-employment income, whereas columns (4) and (5) shows the decomposition of gross income between general and savings income. Note that columns (1) to (3) and columns (4) to (5) add up to 100.

the top decile income from labor is less important; although even for the top 1% the share of labor income is very high, close to 65%. In the lowest end of the distribution, especially in the bottom 1%, capital income appears very significant, although this reflects the very low income levels of this group (see Table 4). Excluding the lowest quintile, capital income accounts for around 6% to 9% of gross income, reaching 24.1% for the richest taxpayers. Self-employment income accounts for 7.8% of gross income in the second quintile, while it drops to around 4% to 6% for richer individuals. At the top of the distribution it accounts for slightly more than 12% of total income. In columns (4) and (5) we show the decomposition of gross income between general and savings income. While general income is by far the largest income source, for taxpayers in the top 1% income taxed under the savings scale is significant, reaching on aggregate 30% of total income.

4.1.2 Households

In Table 6 we compare the household income distribution in 2013 computed from the tax data and from the EFF. Regarding the latter, the column (2) depicts the income distribution under the fiscal household definition (the household head and their spouse), whereas the column (4) shows the distribution under the whole household definition (all the household members). We find that the EFF and the tax data provide very similar estimates of the income distribution, especially if

TABLE 6
HOUSEHOLD INCOME DISTRIBUTION: TAX DATA COMPARED TO EFF (2013)

Quantiles	Tax Data	EFF Fiscal Household	EFF Whole Household
	(1)	(2)	(3)
<i>Bottom</i>			
1%	0.0%	0.1%	0.1%
1-5%	0.3%	0.7%	0.7%
5-10%	1.0%	1.2%	1.2%
<i>Quintiles</i>			
1st (bottom 20%)	4.4%	4.9%	5.1%
2nd (20-40%)	9.6%	9.4%	9.7%
3rd (40-60%)	14.5%	14.5%	15.4%
4th (60-80%)	21.7%	22.7%	22.6%
5th (80-100%)	49.9%	48.5%	47.3%
<i>Top</i>			
90-95%	11.0%	11.0%	10.8%
95-99%	13.2%	13.0%	12.5%
1%	9.7%	8.0%	7.6%
<i>Other statistics</i>			
Gini coefficient	0.45	0.44	0.42
Var - log income	1.10	0.70	0.66
P90/P10	7.89	7.48	7.01
P50/P10	3.00	2.73	2.73
P90/P50	2.63	2.74	2.56

Notes: This table depicts the 2013 household income distribution according to the tax return data (aggregated at the household level) and the Survey of Household Finances (EFF). Households in the latter are defined in two ways. First, fiscal household, comprising the household head and their partner. Second, the whole household, including all the household members.

one focuses on the fiscal household definition of the EFF. For example, income of the top 20% amounts to around 50% in both the tax and the survey data, while the bottom 20% receives around 5% of earnings. In general, the discrepancies between the tax and the survey data tend to be larger at the top of the income distribution. For example, the EFF seems to under predict the share of income accruing to the top 1% by 1.7 percentage points. If one focuses on the income accruing to all household members (whole household definition), depicted in column (4), the differences between the tax and the survey data tend to be larger.

4.2 Tax Rates and Tax Liabilities

In Table 7 we summarize the distribution of tax liabilities and tax rates. In columns (1) and (2) we also depict the corresponding distributions of gross income and taxable income (already shown in Table 3), in order to illustrate the progressivity of the tax code. While the top quintile accounts for 47.1% of gross income, it pays around 73% of total tax liabilities. Similarly, the top 1% accounts

TABLE 7
DISTRIBUTION OF INDIVIDUAL TAX LIABILITIES AND TAX RATES (2015)

Quantiles	Gross Income	Taxable Income	Tax Liabilities	Average Tax Rate	Statutory Marginal Tax Rate
	(1)	(2)	(3)	(4)	(5)
<i>Bottom</i>					
1%	0.0%	0.0%	0.0%	0.0%	4.0%
1-5%	0.3%	0.0%	0.0%	0.0%	7.9%
5-10%	1.0%	0.3%	-0.1%	0.0%	8.1%
<i>Quintiles</i>					
1st (bottom 20%)	4.6%	2.0%	-0.2%	0.1%	12.9%
2nd (20-40%)	10.2%	7.9%	0.7%	1.3%	20.3%
3rd (40-60%)	15.5%	15.3%	7.0%	6.4%	23.4%
4th (60-80%)	22.7%	23.4%	19.4%	11.8%	27.8%
5th (80-100%)	47.1%	51.4%	73.2%	19.0%	34.5%
<i>Top</i>					
90-95%	10.1%	10.8%	13.8%	19.0%	35.5%
95-99%	11.9%	13.1%	20.6%	23.8%	39.5%
1%	9.5%	11.1%	21.0%	30.6%	39.9%

Notes: This table shows the distribution of individual tax liabilities (column 3), average effective tax rates (column 4) and statutory marginal tax rates (column 5) across the gross income distribution. In columns (1) and (2) the distribution of gross income and taxable income are summarized in order to highlight the progressivity of the tax code.

for 9.5% of gross income, but pays about 21% of total taxes. As a matter of fact, close to 93% of tax payments are concentrated in the top 40%, while the bottom two deciles account for only 0.5% of the tax.

The high concentration of tax liabilities is reflected in the small average tax rates at the lower end of the income distribution and the larger rates at the upper end, which average 19.0% in the top quintile and 30.6% in the top 1%. Average statutory marginal tax rates are also highest for richer individuals, reaching almost 40% for the top 1%, while they are significantly lower as we move down the income distribution.

These averages hide a substantial degree of heterogeneity across individuals. Panel A of Figure 3 depicts the average effective tax rates across different multiples of mean gross income, together with 2 standard error bands.³¹ As can be seen, there is wide variation of tax rates even for individuals with the same gross income, being this the result of different family characteristics and tax benefit entitlements. The shape of this curve is what the parametric estimates of Section 5 are meant to approximate.³²

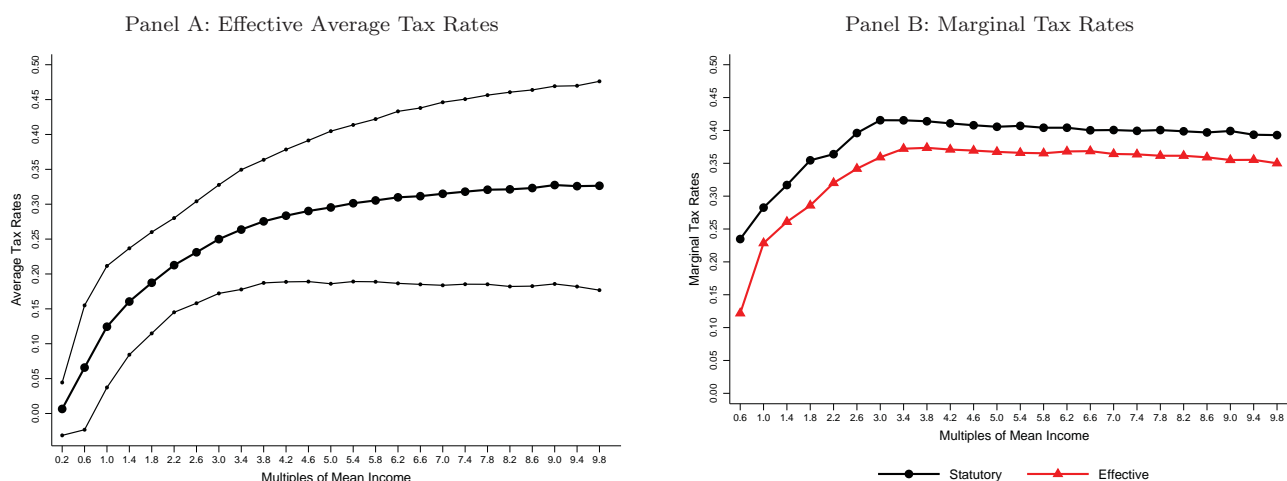
In panel B of Figure 3 we represent the corresponding curves of statutory and effective marginal tax rates. The figure shows that marginal rates increase rapidly with income, but stabilize at

³¹Note that mean individual gross income in 2015 was €24,291, while household mean income in 2013 amounted to €30,839.

³²Figure A.1 in the online appendix shows that median tax levels are almost identical to mean tax levels up to 4 times mean income (about €100,000) and slightly higher above that.

FIGURE 3

INDIVIDUAL EFFECTIVE AVERAGE AND MARGINAL TAX RATES (2015)



Notes: Panel A depicts the 2015 effective average tax rate (± 2 standard deviations) across different multiples of mean income. Each data point corresponds to the mean average tax rate of taxpayers whose income is larger than or equal to the point in the x-axis and less than the next point. For instance, the data point of mean income 1.4 is the mean average tax rate of taxpayers earning income within the interval [1.4,1.8). For the last point (9.8), the tax rate is calculated for incomes between 9.8 and 10.2 of mean income. Panel B shows the statutory and effective marginal tax rates. Statutory rates are computed as the weighted average of general and savings marginal rates (gross of the family tax credit), while effective rates are computed as explained in footnote 23.

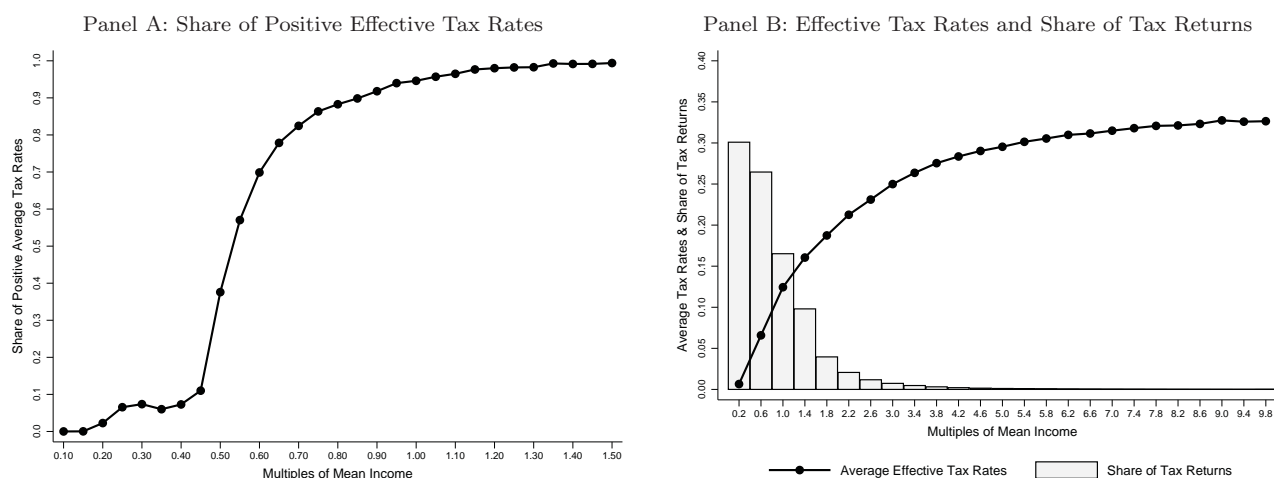
around 3 times mean income (€75,000) and start to decline linearly at a slow rate. The set of tax benefits renders the effective curve below the statutory one, being the difference roughly about 4 percentage points on average.

Figure 4 highlights two key features of the distribution of tax liabilities and taxes in Spain. First, a significant share of individuals face a zero effective tax rate, around 37% of all taxpayers in 2015. The panel A shows that until about 45% of mean income (€11,000), the percentage of taxpayers facing positive rates is only about 10%. The share increases steeply afterward, and by 90% of mean income (€22,000) more than 90% of taxpayers pay taxes, with the share of positive tax liabilities converging to 100% as income increases. As we detail below, this feature of the tax will be important in the parametric estimates of effective tax functions. Second, most taxpayers are concentrated on relatively low income levels. The panel B of Figure 4 shows the share of tax returns in each income bin and the effective tax curve already plotted in panel A of Figure 3. While the effective tax rates increase from 0 to about 30%, most taxpayers face much lower rates. For about 75% of all taxpayers, the effective tax rates are below 15% (the sum of the first 3 bars in Figure 4). As a result, while most discussion on tax increases and tax cuts focus on top marginal rates, for a great majority of households, the relevant tax rates are much lower.³³

4.3 Tax Benefits (Deductions and Credits)

We next turn to the distribution of tax benefits. In Table 8 we describe the distribution of the most important tax deductions, which, as we mentioned in Section 3.2, are tax benefits that reduce

FIGURE 4
EFFECTIVE TAX RATES ALONG THE INCOME DISTRIBUTION
(INDIVIDUALS, 2015)



Notes: The panel A plots the share of taxpayers facing effective positive tax rates in each income bin. The panel B depicts the 2015 mean effective average tax rates and the share of taxpayers across bins of mean income.

directly the tax base. Table A.4 in the online appendix documents the importance of different deductions for taxpayers at different points in the income distribution as well as for all taxpayers (the last row). When we consider the aggregate, the most important tax deduction is the one granted to labor income earners, which accounts for about 63% of total deductions. It is followed by social security contributions paid by the employees (20%), the tax benefit associated to joint tax returns (10%), and the contributions to private pension plans (4%). There are, however, differences in the importance of these deductions along the income distribution. For instance, the deduction for contributions to private pension plans accounts for 27% of all tax deductions for the top 1% of taxpayers, while it represents less than 2% for the first two quintiles.³⁴

The top quintile benefits from more than 25% of the total tax deductions, while the bottom quintile receives around 16% (see the first column of Table 8). This reflects the fact that two important deductions, those associated with private pension plans and social security contributions, benefit mostly the top two quintiles. The top quintile, for example, got 71.5% of benefits associated with private pensions and 41% of benefits associated with social security contributions. Furthermore, the tax base of many low income earners goes to zero after making use of some tax benefits, hence exhausting the possibility of further deductions.

Tax credits, as mentioned in Section 3.2, correspond to tax benefits that are subtracted directly from the tax liabilities. Table 9 depicts their distribution across income groups and Table A.5 in

³³See Guner et al. (2018) for a quantitative analysis of how higher tax rates on top incomes affect the total tax collection in Spain.

³⁴Ayuso et al. (forthcoming) estimate the savings effect of the introduction of this deduction in 1988. They show that when this policy was introduced, most contributions to pension funds were made by older and high income individuals, who had the largest marginal potential gains. Since 1988 the policy became very popular. In 2015, close to 15% of taxpayers had some contribution to pension plans.

TABLE 8
DISTRIBUTION OF INDIVIDUAL TAX DEDUCTIONS (2015)

Quantiles	Total	Social Security Contributions	Labor Income	Joint Filing	Contributions to Private Pensions	Other
	(1)	(2)	(3)	(4)	(5)	(6)
<i>Bottom</i>						
1%	0.0%	0.0%	0.0%	0.0%	0.0%	0.0%
1-5%	1.0%	0.2%	1.3%	0.9%	0.2%	0.6%
5-10%	3.9%	0.7%	6.0%	1.2%	0.4%	0.8%
<i>Quintiles</i>						
1st (bottom 20%)	16.1%	3.7%	24.5%	6.0%	1.6%	2.8%
2nd (20-40%)	23.5%	10.8%	31.6%	18.4%	3.9%	4.7%
3rd (40-60%)	16.9%	18.7%	15.1%	27.2%	7.8%	8.9%
4th (60-80%)	18.3%	26.1%	14.5%	25.4%	15.1%	15.5%
5th (80-100%)	25.2%	40.7%	14.2%	23.0%	71.5%	68.0%
<i>Top</i>						
90-95%	6.2%	11.6%	3.5%	5.4%	16.6%	7.9%
95-99%	6.1%	10.2%	2.8%	4.3%	27.2%	14.9%
1%	2.5%	2.4%	0.6%	1.1%	12.5%	32.7%

Notes: This table shows the distribution of tax deductions over the gross income distribution. Tax deductions are amounts subtracted from the tax base. Total tax deductions are computed as gross income minus taxable income, where the latter refers to income to which the tax schedule is applied.

TABLE 9
DISTRIBUTION OF INDIVIDUAL TAX CREDITS (2015)

Quantiles	Total	Family Allowance	House Purchases	Employed Mothers	Large Families	Regional	Other
	(1)	(2)	(3)	(4)	(5)	(6)	(7)
<i>Bottom</i>							
1%	0.0%	0.0%	0.0%	0.1%	0.3%	0.0%	0.1%
1-5%	0.4%	0.4%	0.0%	1.1%	2.0%	0.0%	0.4%
5-10%	0.9%	0.9%	0.0%	2.2%	3.6%	0.0%	0.7%
<i>Quintiles</i>							
1st (bottom 20%)	4.9%	5.3%	0.7%	10.7%	12.2%	0.4%	2.0%
2nd (20-40%)	16.5%	18.1%	7.1%	22.3%	15.4%	11.7%	3.1%
3rd (40-60%)	24.8%	25.1%	22.8%	23.5%	20.3%	37.4%	21.1%
4th (60-80%)	25.8%	25.7%	29.7%	24.5%	19.6%	32.9%	18.2%
5th (80-100%)	28.0%	25.7%	39.7%	19.0%	32.5%	17.7%	55.6%
<i>Top</i>							
90-95%	6.9%	6.4%	10.4%	4.7%	8.3%	4.5%	9.7%
95-99%	5.8%	5.1%	9.7%	3.1%	8.8%	3.7%	11.7%
1%	2.2%	1.3%	2.4%	0.5%	3.3%	0.9%	22.3%

Notes: This table characterizes the distribution of tax credits across income groups. Tax credits are amounts that directly reduce tax liabilities. Total tax credits are computed as the difference between tax liabilities following the application of the tax schedule and final tax liabilities.

the online appendix shows their relative importance for different income groups. By far the family allowance is the largest tax credit, representing more than 95% of these benefits for the bottom 20% and more than 80% for the top 20%. Next is the tax credit associated to house purchases, that granted to employed mothers, large families, and a battery of region-specific tax credits.³⁵

As for the distribution of these benefits, the family allowance is evenly distributed, since it depends solely on family characteristics. Note that the smaller share accruing to the lower end of the income distribution is explained by the exhaustion of tax liabilities as a result of the application of (part of) this allowance. On the contrary, the tax credits associated to house purchases and large families benefit the richer individuals, whereas benefits granted to employed mothers and the set of region-specific benefits goes mainly to the middle of the income distribution.

5 Parametric Estimates

In this section we present the estimated effective average tax functions. We proceed as follows. First, we show the estimates of the average and marginal tax rate functions for individuals in 2015. Second, we present an alternative approach and estimate separate parametric functions for the different components of income (general income and savings income), as well as for tax credits, which we refer to as the three-function approach. Most of our analysis focuses on single tax functions that map gross incomes to tax liabilities. Besides its simplicity, this approach provides estimates that can be compared with available estimates for other countries. Furthermore, division of general and savings income in Spanish tax code do not easily lend itself to notions of capital and labor income in macro models, since some forms of capital income. e.g. rents from real estates, are lumped together with more standard forms of labor income.

Third, we present an evaluation of all the estimated functions by their capacity to predict the amount and the distribution of tax liabilities. Fourth, we account for changes in taxes over time by providing estimates of the tax functions for individuals between 2002 and 2015. Finally, we estimate functions for households in 2013.

5.1 Effective Tax Functions of Individuals in 2015

In order to account for the fact that a significant number of Spanish taxpayers face a zero tax rate (panel A of Figure 4), we estimate:

$$t(\tilde{I}) = \begin{cases} 0 & \text{if } \tilde{I} < \bar{I}, \\ f(\tilde{I}) & \text{if } \tilde{I} \geq \bar{I}, \end{cases} \quad (1)$$

where t is the average tax rate, \tilde{I} stands for multiples of mean gross income, \bar{I} is the income threshold, chosen so as to minimize the mean squared error, and $f(\tilde{I})$ is a parsimonious non-linear

³⁵The tax credit associated to house purchases was stopped in 2013, so that it only benefits transactions carried out before that year.

function. Following Guner et al. (2014), we consider two possible specifications of f : The *HSV* specification, used by Benabou (2002) and Heathcote, Storesletten, and Violante (2017):³⁶

$$f(\tilde{I}) = 1 - \lambda(\tilde{I})^{-\tau}, \quad (2)$$

and the *GS* specification, used in Gouveia and Strauss (1994):

$$f(I) = b[1 - (sI^p + 1)^{-\frac{1}{p}}]. \quad (3)$$

Note that in this case \tilde{I} is replaced by I , i.e. by the income level.³⁷

Table 10 shows the parameter estimates.³⁸ In general, the parameters are estimated with a high degree of precision. The income cutoffs are estimated between 49% and 55% of mean income for individuals in 2015, and between 36% and 42% of mean income for households in 2013.

In panel A of Figure 5 we plot the estimated average tax rates resulting from the specifications together with the data. The observed average tax rates show a steep increase at lower income levels and then flatten out at the right-end of the income distribution. Using the OECD tax and benefit calculator, Holter et al. (2018) estimate *HSV* effective tax functions for a group of OECD countries. Their estimate of τ for Spain is 0.148 (close to our estimate in Table 10). Their results imply higher levels of τ , i.e. higher degrees of progressivity, for most European countries, e.g. 0.18 for Italy, 0.2 for the UK, 0.22 for Germany and Sweden, and 0.26 for Denmark.³⁹

From equation (2), the marginal tax rate of the *HSV* specification is given by:

$$m(\tilde{I}) = 1 - \lambda(1 - \tau)\tilde{I}^{-\tau}, \quad (4)$$

while from equation (3) we can derive the marginal tax rate function of the *GS* specification as:

$$m(I) = b[1 - (sI^p + 1)^{-1/p-1}]. \quad (5)$$

Using the parametric estimates depicted in Table 10, the panel B of Figure 5 shows the resulting marginal tax rate functions, as well as the data. The data for marginal tax rates correspond to effective marginal tax rates. As mentioned in Section 4.2, effective marginal rates increase rapidly and flatten out at a certain income level. This last feature is well accounted for by the shape of the

³⁶In the *HSV* specification, λ determines the average taxes while τ determines the progressivity. When $\tau = 0$, taxes are flat and equal to $1 - \lambda$. When $\tau > 0$, taxes are positive, and higher levels of τ imply a greater degree of progressivity.

³⁷Guner et al. (2014) consider also two other specifications: a *log* specification ($f(\tilde{I}) = \alpha + \beta \log(\tilde{I})$) and a *power* specification ($f(\tilde{I}) = \delta + \gamma \tilde{I}^\epsilon$). These functions perform worse for the Spanish data than the *HSV* and *GS* specifications. The estimates are available upon request.

³⁸These functions are estimated by NLS. Following Guner et al. (2014), we divide I by 1,000 when estimating the *GS* function. Figure A.2 in the online appendix shows the mean squared error of the *HSV* and *GS* specifications, as a function of \tilde{I} .

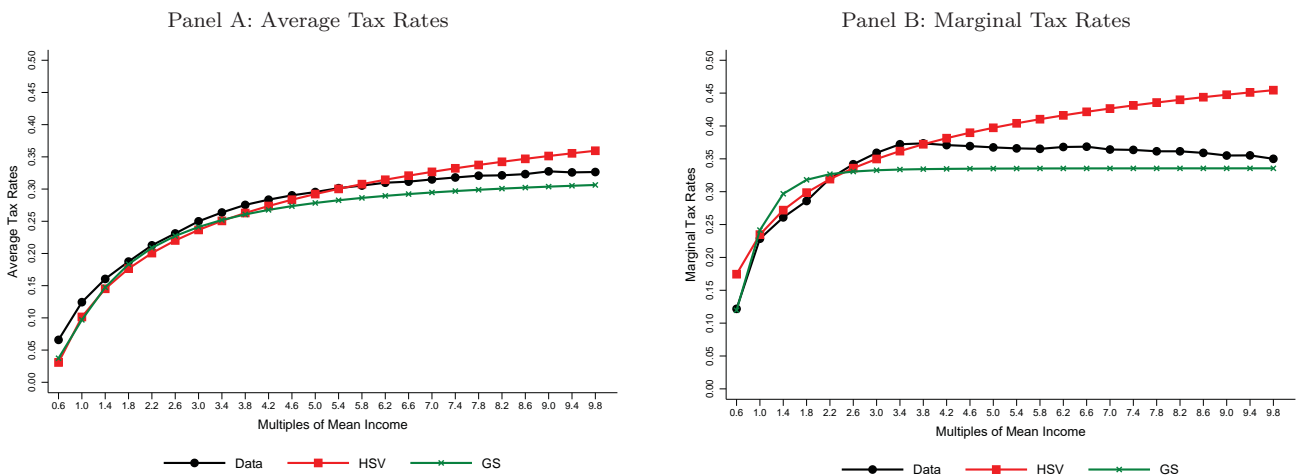
³⁹For the OECD tax and benefit calculator, see: <http://www.oecd.org/els/soc/benets-and-wages/tax-benet-webcalculator/>.

TABLE 10
PARAMETRIC ESTIMATES OF THE
AVERAGE TAX FUNCTIONS

Functions	Individuals 2015 (1)	Households 2013 (2)
<i>HSV</i>		
λ	0.8985 (0.0000)	0.8823 (0.0001)
τ	0.1483 (0.0001)	0.1224 (0.0001)
\bar{I}	49%	36%
MSE	0.0011271	0.0018442
<i>GS</i>		
b	0.3356 (0.0003)	0.3283 (0.0007)
s	0.0003 (0.0000)	0.0019 (0.0000)
p	2.7340 (0.0072)	1.8810 (0.0085)
\bar{I}	55%	42%
MSE	0.0011258	0.0018817

Notes: This table shows the parameter estimates of the effective average tax functions for individuals in 2015 and for households in 2013. \bar{I} is the percentage of mean income below which the effective taxes are estimated to be zero. Each column accounts for a different sample: individuals in 2015 and households in 2013. MSE stands for mean squared error. Standard errors are in parenthesis.

FIGURE 5
EFFECTIVE TAX FUNCTIONS (INDIVIDUALS, 2015)



Notes: This figure plots the mean effective tax rates by income level as well as the predicted rates resulting from the estimated tax functions (*HSV* and *GS* specifications). The panel A shows the effective average tax rates, whereas the panel B depicts the implied marginal rate functions. Each data point corresponds to the mean tax rate of taxpayers whose income is larger than or equal to the point in the x-axis and less than the next point. For the last point (9.8), the tax rate is calculated for incomes between 9.8 and 10.2 of mean income. The tax rate functions are evaluated at the corresponding point in the x-axis. The parametric estimates of the average tax rate functions can be found in the first column of Table 10. See section 4.2 for details on the computation of effective marginal rates.

GS function. On the other hand, marginal tax rates under this specification increase and flatten too quickly compared to the data. At around 5 times mean income, the marginal tax rates are 33.5% under the *GS* specification, while they are 36.8% in the data. In contrast, for 1.5 times mean income, the *GS* tax function overestimates the marginal tax rates by around 3.5 percentage points. On the contrary, the *HSV* tax function captures the marginal tax rates very well up to 4 times mean income. After 4 times mean income, however, the marginal tax rates keep increasing under the *HSV* function, while they are flat in the data. By 5 times mean income, for example, the marginal tax rate under the *HSV* function is about 3 percentage points higher than the data.

Overall, the *HSV* function fits well the tax rates of the well-off, but it is unable to capture the near constant marginal tax rates at very high income levels, which leads to an over estimation of taxes paid by the very rich. On the contrary, the *GS* function tends to under estimate the average tax rates, yet it captures very well the flattening out of tax rates.^{40, 41}

5.2 Three-function Approach

In this section we provide an alternative approach to parametrize the Spanish Personal Income Tax. We estimate three different functions that connect income from different sources (general vs. savings) to the tax liabilities. Specifically, we estimate a function that relates general income with general tax rates; a second function that links the savings income to the savings tax rates; and a third function that accounts for the amount of tax credits as a function of total gross income. In this way, starting from gross income by income source, the final tax liabilities of the taxpayer can be easily estimated by going through each of these functions. It must be noted that one advantage of this three-function approach is that it allows simulating more detailed reforms, such as a change in capital tax rates.

For the general tax rate function we pose the same functional form as in the effective tax function estimated in Section 5.1, i.e. that described in equation (1). We follow this approach given that the shape of general tax rates resembles that of effective tax rates. We estimate this function under the two specifications *HSV* (equation 2) and *GS* (equation 3). Note that in this case t stands for the average general tax rate, \tilde{I} for multiples of mean general income and I for the general income level.⁴²

Regarding the savings tax rates (panel B of Figure 2), we estimate the following linear function with a kink:

$$t_s(\tilde{I}_s) = \begin{cases} \alpha + \zeta \tilde{I}_s & \text{if } \tilde{I}_s < \bar{S}, \\ \kappa & \text{if } \tilde{I}_s \geq \bar{S}, \end{cases} \quad (6)$$

⁴⁰Regarding the tax functions of individuals by marital status, we found no remarkable differences between taxes paid by single and married individuals, see Figure A.3 in the online appendix.

⁴¹As we show in online Appendix A and B, when we restrict the sample to taxpayers between ages 16-64, we get very similar results, see Table A.6 and Figure A.4.

⁴²Mean general income in 2015 was €22,805, whereas mean savings income was €1,486.

where t_s is the average savings tax rate, \tilde{I}_s stands for multiples of mean savings income, κ is the sample mean of the savings tax rate if $\tilde{I}_s \geq \bar{S}$ and \bar{S} is again chosen so as to minimize the MSE.

Finally, for the tax credit function, we follow Guner et al. (2017) and estimate the following Ricker model:

$$c(\tilde{I}) = \beta_0 + \exp(\beta_1)\exp(\beta_2\tilde{I})\tilde{I}^{\beta_3}, \quad (7)$$

where c stands for total tax credits as a fraction of gross income and \tilde{I} refers to multiples of mean gross income.^{43, 44}

The three estimated functions are depicted in Figure 6, while the parametric estimates are shown in Table 11. The panel A of the figure indicates that both the *HSV* and the *GS* specifications

TABLE 11
PARAMETRIC ESTIMATES OF THE TAX FUNCTIONS:
THREE-FUNCTION APPROACH (INDIVIDUALS, 2015)

Parameters	Individuals 2015	Parameters	Individuals 2015
	(1)		(2)
<i>General income tax rates (HSV)</i>		<i>Savings income tax rates</i>	
λ	0.8919 (0.0000)	α	0.1272 (0.0001)
τ	0.1581 (0.0001)	ζ	0.0057 (0.0001)
\bar{I}	49%	κ	0.2018 (0.0374)
MSE	0.0008902	\bar{S}	13.14 MSE 0.0076674
<i>General income tax rates (GS)</i>		<i>Tax credits</i>	
b	0.3893 (0.0004)	β_0	0.0085 (0.0000)
s	0.0015 (0.0000)	β_1	12.5683 (0.2572)
\underline{p}	2.0366	β_2	-17.5032
\bar{I}	58% (0.0041)	β_3	14.4012 (0.2610)
MSE	0.0009215	MSE	(0.2142) 0.0008593

Notes: This table shows the parameter estimates of the general income tax function (for both the *HSV* and *GS* specifications), the savings income tax function, and the tax credits function for individuals. \bar{I} stands for mean general income below which tax rates are estimated to be zero, while \bar{S} is the estimated kink of the savings tax function.

⁴³Note that total tax credits are computed net of the family allowance, since the latter is subsumed in the computation of the general tax rate, see the definition thereof in Section 3.2. Also, note that the general tax rate function and the tax credit function are estimated by NLS, while the savings tax rate function is estimated by OLS. In the estimation of the tax credit functions, we exclude a few observations whose tax credits are larger than their gross income.

⁴⁴The second term in equation (7) is known as Ricker-function, after Ricker (1954).

capture well the shape of the general income tax function. In panel B, also, it becomes apparent that the shape of the savings income tax function is well approximated by a piecewise functions of the form estimated, where the tax rate increases linearly and flattens out at around 13 times mean savings income. Finally, tax credits seem to benefit more, as a fraction of gross income, taxpayers earning around mean income. From that point on, the incidence of tax credits diminishes until it converges at around 0.62% of gross income. This shape is decently captured by the model proposed, yet the tax credits of the right-end of the income distribution are overstated, see the panel C.

5.3 Evaluation of Tax Functions

How well do these functions capture the level and the distribution of tax liabilities? In this section we provide an assessment. In the first column of Table 12 we depict the distribution of tax revenue by income quantile in the data. The remaining columns show the percentage deviation of the estimates from the data. We can see that the tax functions approximate quite well total

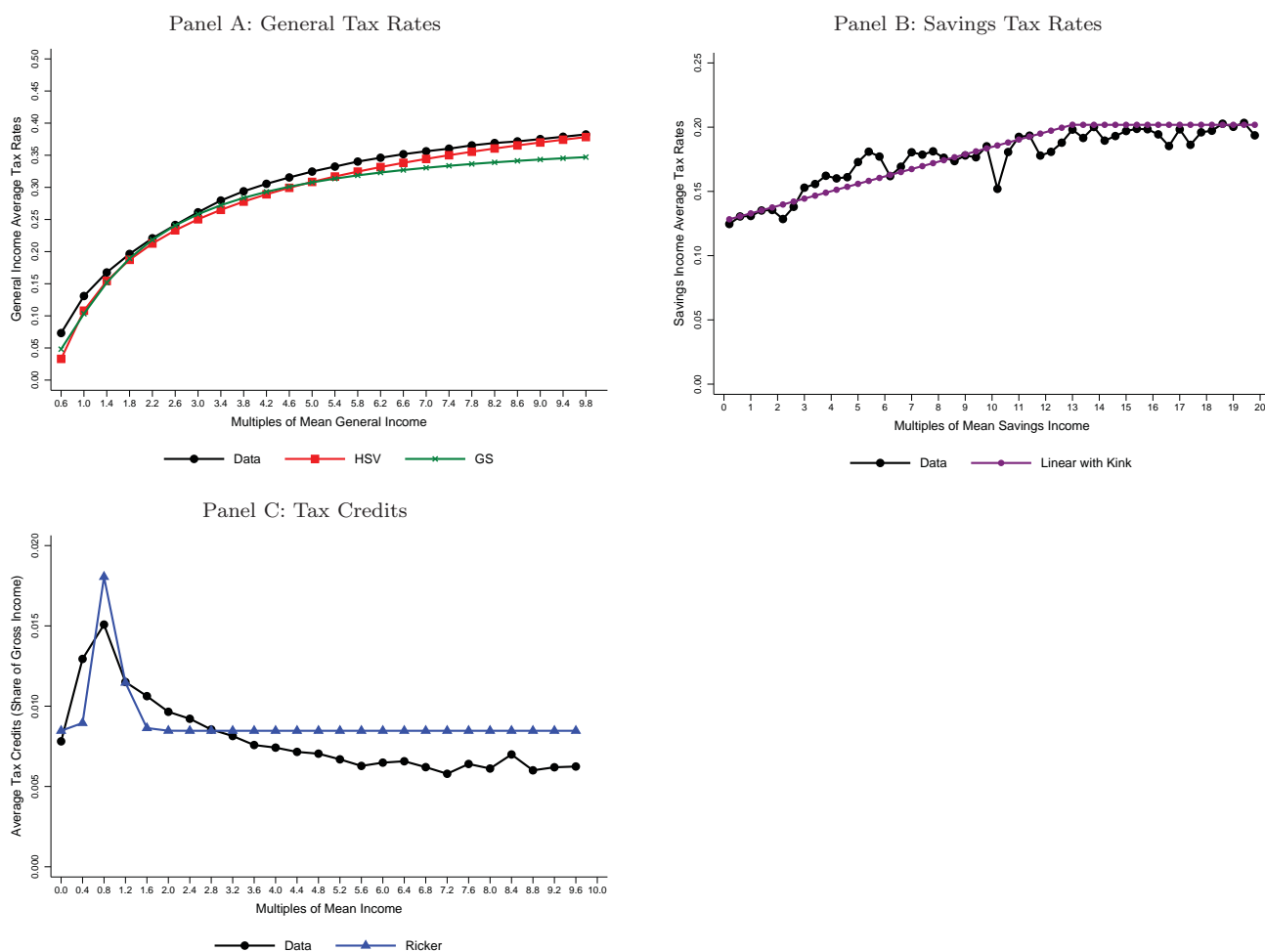
TABLE 12
EVALUATION OF TAX FUNCTIONS: TOTAL TAX LIABILITIES IN 2015
(% DIFFERENCE WITH RESPECT TO THE DATA)

Quantiles	Data (€bn)	One-function Approach		Three-function Approach	
		HSV	GS	HSV	GS
	(1)	(2)	(3)	(4)	(5)
<i>Bottom</i>					
1%	0.0	-	-	-	-
1-5%	0.0	-	-	-	-
5-10%	0.0	-	-	-	-
<i>Quintiles</i>					
1st (bottom 20%)	-0.1	-	-	-	-
2nd (20-40%)	0.4	50.4%	54.1%	14.8%	7.7%
3rd (40-60%)	4.5	7.3%	2.6%	-2.3%	-2.7%
4th (60-80%)	12.4	-0.3%	-2.1%	-0.6%	-4.0%
5th (80-100%)	46.9	7.1%	0.6%	0.8%	-1.0%
<i>Top</i>					
90-95%	8.8	-0.4%	3.6%	1.4%	3.8%
95-99%	13.2	-2.0%	-0.5%	-1.8%	0.8%
1%	13.4	27.7%	-1.5%	2.1%	-8.2%
<i>Total</i>					
Tax liabilities	64.0	6.2%	0.8%	0.5%	-1.5%

Notes: This table shows the % difference across income groups of total tax liabilities estimated from each tax function and the data. Columns (2) and (3) are based on tax functions estimated from final tax liabilities, i.e. the one-function approach, see Section 5.1. Column (2) displays the results of the HSV function, while column (3) is based on the GS function. In columns (4) and (5) we report the results from the three-function approach. This entails estimating one function each for general income tax rates, savings income tax rates and tax credits. In column (4) the general income function is the HSV specification, whereas in column (5) it is the GS function. The savings income tax rates are modeled by a linear function with a kink and tax credits are estimated as in Guner et al. (2017). See Section 5.2 for more details.

FIGURE 6

PARAMETRIC FUNCTIONS: THREE-FUNCTION APPROACH (INDIVIDUALS, 2015)



Notes: This figure plots the estimation of the three parametric tax functions of the Spanish Personal Income Tax, namely, the average general tax rate (panel A), the average savings tax rate (panel B) and tax credits as a fraction of gross income, see Section 5.2. Each data point corresponds to the mean average tax rate (panels A and C) or tax credit (panel B) of taxpayers whose income is larger than or equal to the point in the x-axis and less than the next point. For the last point, i.e. 9.8 (panels A and C) and 20 (panel B), the data are calculated for incomes between 9.8 and 10.2 and between 20 and 21 of mean income, respectively.

tax collection, except the *HSV* specification of the single-function approach, which tend to over predict it. For example, both specifications in the three-function approach render a deviation of less than 1.5%, while the *GS* function in the one-function approach underestimates total revenue by less than 1%. As already observed in Figure 5, the fact that this function converged to a top marginal tax rate below the one observed in the data leads to an under prediction of taxes paid by the top 1%, although the revenue raised by the top 20% is well accounted for. In contrast, the ever-increasing top marginal tax rate of the *HSV* function results in an over prediction of taxes paid by the 20% and 1% richest taxpayers in the one-function approach.

Table 13 provides a comparison in terms of the percentage point difference of the distribution of tax liabilities along the income distribution. As noted earlier, most tax revenue is accounted for by the top 40% (see the first column), a degree of progressiveness that is well captured by the tax

TABLE 13
EVALUATION OF TAX FUNCTIONS: DISTRIBUTION OF TAX LIABILITIES IN 2015
(PERCENTAGE POINTS DIFFERENCE WITH RESPECT TO THE DATA)

Quantiles	Data	One-Function Approach		Three-Functions Approach	
		HSV	GS	HSV	GS
	(1)	(2)	(3)	(4)	(5)
<i>Bottom</i>					
1%	0.0%	0.0	0.0	0.0	0.0
1-5%	0.0%	0.0	0.0	0.0	0.0
5-10%	-0.1%	0.1	0.1	0.0	0.0
<i>Quintiles</i>					
1st (bottom 20%)	-0.2%	0.2	0.2	0.1	0.1
2nd (20-40%)	0.7%	0.3	0.4	0.1	0.1
3rd (40-60%)	7.0%	0.1	0.1	-0.2	-0.1
4th (60-80%)	19.4%	-1.2	-0.5	-0.2	-0.5
5th (80-100%)	73.2%	0.6	-0.1	0.2	0.4
<i>Top</i>					
90-95%	13.8%	-0.9	0.4	0.1	0.7
95-99%	20.6%	-1.6	-0.3	-0.5	0.5
1%	21.0%	4.3	-0.5	0.3	-1.4

Notes: This table shows the percentage point difference of the distribution of tax liabilities across income groups estimated from each tax function and the data. Columns (2) and (3) are based on tax functions estimated from final tax liabilities, i.e. the one-function approach, see Section 5.1. Column (2) displays the results of the *HSV* function, while column (3) is based on the *GS* function. In columns (4) and (5) we report the results from the three-function approach. This entails estimating one function each for general income tax rates, savings income tax rates and tax credits. In column (4) the general income function is the *HSV* specification, whereas in column (5) it is the *GS* function. The savings income tax rates are modeled by a linear function with a kink and tax credits are estimated as in Guner et al. (2017). See Section 5.2 for more details.

functions. Also, as noted before, the main challenge is to account for the average rates of the very rich. In this regard, it is worth noting that the differences are reasonably small, being lower than 1.5 percentage points in all specifications, except the *HSV* function in the one-function approach.

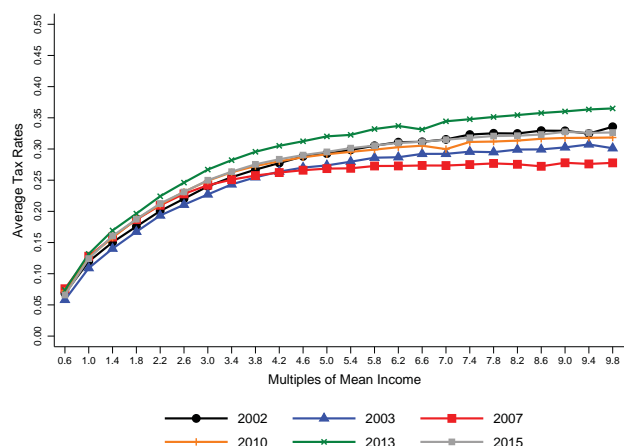
5.4 Changes in Effective Tax Rates since 2000

In panel A of Figure 7 we plot the average tax rates (normalized with respect to average income) from the repeated cross-sections of the data for a selection of years. We can see that the narrative account of the most significant policy actions adopted during 2002 to 2015 (see Section 2.2) helps to interpret the changes in the tax curves. First, the 2003 tax cut implied a significant drop in average tax rates with respect to 2002. Second, the tax cuts during the expansion led to further downward movements of the tax curve, see the 2007 function. Third, the 2010-2011 tax increase placed average tax rates above the levels observed in 2003, while the sharp increase in marginal implemented during the crisis.⁴⁵ Appendix Figure A.5 displays the estimation of the *GS* (panel A) and *HSV* functions (panel B) for each year, while Table A.7 reports the parameter estimates.

⁴⁵The picture encompassing the full set of years as well as the parameter estimates are available upon request.

FIGURE 7

OVER TIME EVOLUTION OF AVERAGE TAX RATES (2002-2015)



Notes: This figure shows the over time evolution of average tax rates, constructed from the microdata for a selection of years.

5.5 Effective Tax Functions for Households in 2013

The second column of Table 10 provides the parameter estimates of the tax function faced by households in 2013, while Figure 8 gives a graphical representation. The panel A of the figure shows that both the *HSV* and *GS* functions track very accurately the shape of average taxes along the income distribution. Furthermore, in regard to differences by marital status, the panel B shows that the *HSV* specification tends to over estimate the marginal tax rates of the richest single households, which comprise around 45% of all households, while both functions are able to capture well the tax curve of married households (see panel C).⁴⁶

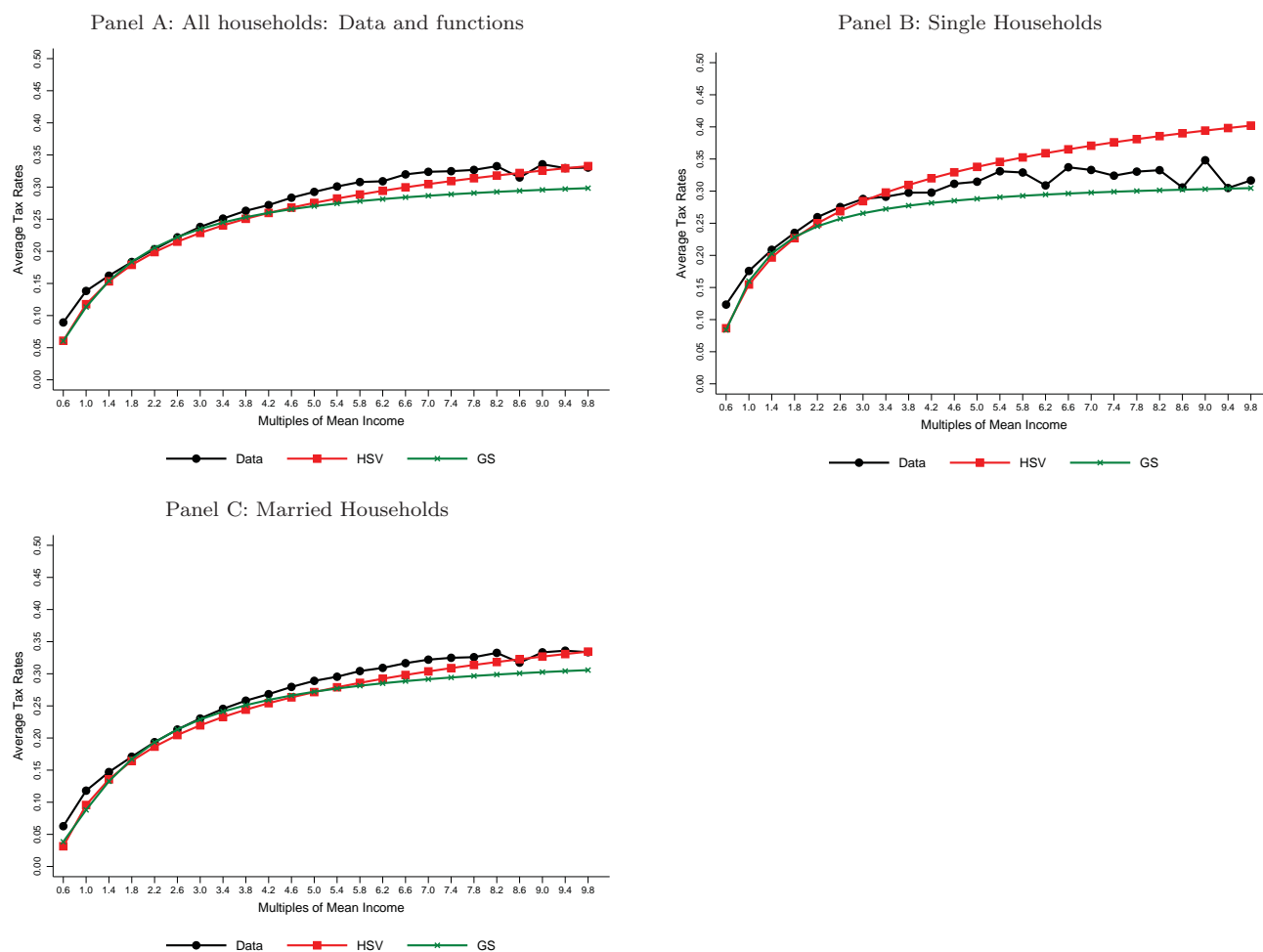
6 After-tax Income

In this section we provide a brief account of after-tax income in both the tax and the survey (the EFF) data. This allows us to evaluate the progressiveness of the tax code, by comparing gross income and after-tax income figures. Note that in the survey data after-tax income is not observed. For this reason, we use the tax functions to estimate, given gross income, the tax liabilities faced by the household, as we explain below. After-tax income, in both the administrative and survey data, is computed as gross income minus tax liabilities.

Starting with the tax data, columns (1) to (4) of Table 14 illustrate the progressiveness of the tax code, by depicting the distribution of gross and after-tax income, for both individuals and households. It is worth noting that after-tax income is substantially less unequal than gross

⁴⁶Table A.8 in the online appendix depicts the parameter estimates.

FIGURE 8
EFFECTIVE AVERAGE TAX RATES: DATA AND FUNCTIONS
(HOUSEHOLDS, 2013)



Notes: This figure plots the data as well as the effective average tax functions for households in 2013 (panel A). We also depict the corresponding data and functions for single households (panel B) and married households (panel C). Each data point corresponds to the mean average tax rate of taxpayers whose income is larger than or equal to the point in the x-axis and less than the next point. The tax rate functions are evaluated at the corresponding x-axis point.

income. The Gini coefficient, for instance, declines by about 4 to 5 percentage points (from 0.42 to 0.38 for individuals, and from 0.45 to 0.40 for households), and the 90th to 10th percentile ratio is reduced from 7.31 to 6.00 for individuals and from 7.89 to 6.50 for households. Along the income distribution, the income share of the top 20% gets reduced by around 4 percentage points as a result of the tax, while the rest of quintiles experiment an increase in their income share.

In columns (5) to (8) of the same table we present the after-tax income distribution estimated in the survey data. We show the results for the two household definitions: fiscal household (comprising the reference person and their spouse, in columns 5 and 6) and whole household (comprising all household members, in columns 7 and 8). As mentioned above, the EFF provides income solely in gross terms. Hence, we make use of the estimated *GS* function from the tax data to approximate

TABLE 14
AFTER-TAX INCOME DISTRIBUTION: DATA AND ESTIMATES (*GS* FUNCTION)

Quantiles	Individuals 2015		Households 2013					
			Tax Data		EFF Fiscal Household		EFF Whole Household	
	Gross income	After-tax income	Gross income	After-tax income	Gross income	After-tax income	Gross income	After-tax income
	(1)	(2)	(3)	(4)	(5)	(6)	(7)	(8)
<i>Bottom</i>								
1%	0.0%	0.0%	0.0%	0.0%	0.1%	0.1%	0.1%	0.1%
1-5%	0.3%	0.4%	0.3%	0.4%	0.7%	0.8%	0.7%	0.8%
5-10%	1.0%	1.2%	1.0%	1.2%	1.2%	1.4%	1.2%	1.5%
<i>Quintiles</i>								
1st (bottom 20%)	4.6%	5.3%	4.4%	5.2%	4.9%	5.8%	5.1%	6.2%
2nd (20-40%)	10.2%	11.8%	9.6%	10.9%	9.4%	10.6%	9.7%	11.0%
3rd (40-60%)	15.5%	16.9%	14.5%	15.7%	14.5%	15.7%	15.4%	16.3%
4th (60-80%)	22.7%	23.2%	21.7%	22.3%	22.7%	23.4%	22.6%	22.9%
5th (80-100%)	47.1%	42.8%	49.9%	45.8%	48.5%	44.6%	47.3%	43.7%
<i>Top</i>								
90-95%	10.1%	9.5%	11.0%	10.5%	11.0%	10.3%	10.8%	10.3%
95-99%	11.9%	10.5%	13.2%	11.8%	13.0%	11.6%	12.5%	11.3%
1%	9.5%	7.6%	9.7%	7.7%	8.0%	6.6%	7.6%	6.6%
<i>Other statistics</i>								
Gini coefficient	0.42	0.38	0.45	0.40	0.44	0.39	0.42	0.39
Var - log income	1.14	1.01	1.10	0.97	0.70	0.58	0.66	0.58
P90/P10	7.31	6.00	7.89	6.50	7.48	6.10	7.01	6.15
P50/P10	3.15	2.93	3.00	2.75	2.73	2.54	2.73	2.56
P90/P50	2.32	2.05	2.63	2.36	2.74	2.40	2.56	2.40

Notes: This table depicts the gross and after-tax income distributions from tax data for individuals in 2015 (columns 1 and 2), households in 2013 (columns 3 and 4) and the gross and after-tax income distributions of the Survey of Household Finances (EFF, columns 5 to 8). After-tax income is computed by subtracting the tax liabilities from gross income. Households in the EFF are constructed under two alternative definitions: fiscal household (columns 5 and 6), comprising the head and their partner, and whole household (columns 7 and 8), including all household members. Note that the gross income in column (5) is the result of aggregating incomes from all members of the household even if they are negative, while column (7) is estimated for all members of the household restricted to have positive gross income and non-negative income sources. The after-tax income in the EFF (columns 6 and 8) are estimated by applying the estimated household tax function of the *GS* specification to the gross household income in EFF.

the tax liabilities faced by each household in the survey, and then compute after-tax income. For the definition of fiscal household, we apply the household tax function. For the whole household definition, we apply the household tax function for the reference person and their spouse, the individual function for the remaining household members, and then we aggregate each member's after-tax income at the household level. We find that the estimated after-tax income distributions in the survey data are able to capture the shift from the gross to net income distribution that we observed in the tax data. Specifically, the first four quintiles experience an increase in their income share, while the top 20% undergoes a reduction, the magnitude of the changes being similar to those observed in the tax data.⁴⁷ Hence, the application of the tax functions to the survey data

⁴⁷Note that the *HSV* function provides comparable results, see Table A.9 in the online appendix.

TABLE 15
EVOLUTION OF GROSS AND AFTER-TAX INCOME INEQUALITY
INDICES IN TAX RETURNS (INDIVIDUALS)

Quantiles	2003	2004	2007	2010	2013	2015
	(1)	(2)	(3)	(4)	(5)	(6)
<i>Gross income</i>						
Gini coefficient	0.41	0.41	0.42	0.41	0.41	0.42
Var - log income	0.81	0.78	0.81	1.03	1.07	1.14
P90/P10	5.84	5.82	5.75	6.19	7.07	7.31
P50/P10	2.47	2.47	2.44	2.67	3.07	3.15
P90/P50	2.36	2.36	2.36	2.32	2.30	2.32
<i>After-tax income</i>						
Gini coefficient	0.36	0.37	0.37	0.36	0.36	0.38
Var - log income	0.72	0.68	0.70	0.91	0.94	1.01
P90/P10	4.95	4.93	4.78	5.09	5.75	6.00
P50/P10	2.34	2.33	2.27	2.48	2.83	2.93
P90/P50	2.12	2.11	2.1	2.06	2.03	2.05

Notes: This table accounts for the over time evolution of gross and after-tax income inequality indices, according to the individual tax return data.

can provide a fruitful approach to analyze after-tax income in this type of datasets, even if the actual information is missing.

In Tables 15 and 16 we report how gross and after-tax income inequality have changed in recent years. In the individual data the Gini coefficient remains relatively stable during the sample period, while there is an increase of the 90th to 10th and 50th to 10th percentile ratios in the wake of the financial crisis, suggesting larger inequality within taxpayers. This increase can be explained by the evolution of income shares along the income distribution, which are depicted in Tables A.10 and A.11 in the online appendix. In this respect, it is worth noting the income share decline of the bottom 20% of taxpayers. Regarding the household tax data, while overall inequality, as captured by the Gini index, seems to have increased in the run-up to the crisis and decreased thereafter, the percentile ratios shows somewhat the opposite trend, see Table 16.⁴⁸

In Table 17 we depict the evolution of the household gross income distribution as computed from the different waves of the EFF. They point to a rather stable distribution, at least with respect to the selected inequality indices. Tables A.14 and A.15 in the online appendix show the corresponding evolution in the gross and after-tax income shares, respectively. Interestingly, the over time pattern is comparable to that found in the tax data (see Tables A.12 and A.13). Regarding gross income, the income share of the top 20% in the survey data experienced an increase in the run-up to the financial crisis, and a drop thereafter, while the following 20% followed the opposite pattern. With respect to after-tax income, the evolution, as estimated with the *GS* function, points towards larger income shares of the top 1% during 2004-2007 and a large

⁴⁸See also Tables A.12 and A.13 for the evolution of household gross and after-tax income shares during the sample period, respectively.

TABLE 16
EVOLUTION OF GROSS AND AFTER-TAX INCOME INEQUALITY INDICES
IN TAX RETURNS (HOUSEHOLDS)

Quantiles	2004	2007	2010	2013
	(1)	(2)	(3)	(4)
<i>Gross income</i>				
Gini coefficient	0.46	0.48	0.45	0.45
Var - log income	0.91	0.94	1.18	1.10
P90/P10	7.45	7.23	7.64	7.89
P50/P10	2.65	2.65	2.85	3.00
P90/P50	2.81	2.73	2.68	2.63
<i>After-tax income</i>				
Gini coefficient	0.42	0.44	0.41	0.40
Var - log income	0.81	0.82	1.06	0.97
P90/P10	6.30	6.09	6.40	6.50
P50/P10	2.50	2.45	2.63	2.75
P90/P50	2.52	2.49	2.44	2.36

Notes: This table accounts for the over time evolution of gross and after-tax income inequality indices, according to the tax return data aggregated by household.

TABLE 17
EVOLUTION OF GROSS AND AFTER-TAX INEQUALITY INDICES
IN EFF (FISCAL HOUSEHOLDS)

Quantiles	2004	2007	2010	2013
	(1)	(2)	(3)	(4)
<i>Gross income</i>				
Gini coefficient	0.43	0.44	0.45	0.44
Var - log income	0.75	0.68	0.78	0.70
P90/P10	7.13	7.44	7.40	7.48
P50/P10	2.72	2.94	2.67	2.73
P90/P50	2.62	2.53	2.77	2.74
<i>After-tax income</i>				
Gini coefficient	0.40	0.40	0.41	0.39
Var - log income	0.66	0.58	0.67	0.58
P90/P10	6.04	6.26	6.16	6.10
P50/P10	2.57	2.75	2.51	2.54
P90/P10	2.35	2.27	2.45	2.40

Notes: This table depicts the over time evolution of some inequality indices of gross and after-tax income as estimated in the EFF. Households are defined as fiscal households, i.e. they include the reference person and their spouse. Gross Income is directly observed in the EFF, while after-tax income is estimated by applying the household *GS* tax function estimated in Section 5.5 to gross income.

contraction during the financial crisis, while the top 20% underwent a decrease in its income share in 2010-2013. Regarding the middle of the income distribution, it renders a rather stable path, with some gains for the fourth quintile at the end of the sample period.⁴⁹

⁴⁹Using the *HSV* delivers similar results, see Table A.16 in the online appendix.

7 Conclusions

In this paper we exploit a rich uncensored administrative dataset of tax returns for the years 2002 to 2015 to present key facts about the Spanish Personal Income Tax system. We focus on the distribution of gross income and its sources, taxable income, tax benefits, tax liabilities and after-tax income, as well as effective average and marginal tax rates. We do so for individuals and for households, defining the latter as either joint declarations or as two individual declarations from the same household and differentiate between single and married. We also briefly review how the PIT legislation and the effective tax rates have changed during the period of the analysis.

A second contribution of the paper is the estimation of parametric functions of the effective average tax rates that can be readily used in applied work. We follow two different approaches. First, we estimate a single expression for the final tax liabilities as a function of gross income. Second, we estimate three different functions, one for the general tax rates that apply to the general taxable income, one for the savings tax rates, applied to the savings taxable income, and one for the tax credits. Both approaches generate a distribution of tax liabilities that is very close to the one we observe in the data.

Compliance with Ethical Standards

Guner acknowledges financial support from the Spanish Ministry of Economy and Competitiveness, Grant ECO2014-54401-P. The authors declare that they have no conflict of interest. This article does not contain any studies with human participants or animals performed by any of the authors. This article does not contain any information that requires informed consent.

References

- ALVAREDO, F. AND E. SAEZ (2014): “Income and Wealth Concentration in Spain from a Historical and Fiscal Perspective,” in *Top Incomes: A Global Perspective*, ed. by A. B. Atkinson and T. Piketty, Oxford (UK): Oxford University Press.
- ANGHEL, B., H. BASSO, O. BOVER, J. M. CASADO, L. HOSPIDO, M. IZQUIERDO, I. A. KATARYNIUK, A. LACUESTA, J. M. MONTERO, AND E. VOZMEDIANO (2018): “Income, Consumption and Wealth Inequality in Spain,” *SERIEs - Journal of the Spanish Economic Association*, 9, 351–378.
- AYUSO, J., J. F. JIMENO, AND E. VILLANUEVA (forthcoming): “The Effects of the Introduction of Tax Incentives on Retirement Savings,” *SERIEs - Journal of the Spanish Economic Association*.
- BENABOU, R. (2002): “Tax and Education Policy in a Heterogeneous Agent Economy: What Levels of Redistribution Maximize Growth and Efficiency?” *Econometrica*, 70, 481–517.
- BOVER, O., L. CRESPO, C. GENTO, AND I. MORENO (2018): “The Spanish Survey of Household Finances (EFF): Description and Methods of the 2014 Wave,” Banco de España Occasional Paper N. 1804.
- CALONGE, S. AND J. C. CONESA (2003): “Progressivity and Effective Income Taxation in Spain: 1990 and 1995,” Working Paper, Centre de Recerca en Economia del Benestar, Barcelona.
- DE LA FUENTE, A. (2010): “El nuevo sistema de financiación regional: un análisis crítico y proyecciones para 2009,” *Hacienda Pública Española / Review of Public Economics*, 195, 91–138.
- DÍAZ-GIMÉNEZ, J. AND J. DÍAZ-SAAVEDRA (2009): “The Future of Spanish Pensions,” *Journal of Pension Economics and Finance*, 16, 233–265.
- (2017): “Delaying Retirement in Spain,” *Review of Economic Dynamics*, 12, 147–167.
- GONZÁLEZ, M. AND J. PIJOAN-MAS (2006): “Flat Tax Reforms: A General Equilibrium Evaluation for Spain,” *Investigaciones Económicas*, 30, 317–351.
- GOUVEIA, M. AND R. P. STRAUSS (1994): “Effective Federal Individual Income Tax Functions: An Exploratory Analysis,” *National Tax Journal*, 47, 317–339.
- GUNER, N., R. KAYGUSUZ, AND G. VENTURA (2014): “Income Taxation of US Households: Facts and Parametric Estimates,” *Review of Economic Dynamics*, 17, 559–581.

- GUNER, N., J. LÓPEZ-SEGOVIA, AND R. RAMOS (2018): “Reforming the Individual Income Tax in Spain,” Mimeo.
- GUNER, N., C. RAUH, AND G. VENTURA (2017): “Means-Tested Transfers in the US: Facts and Parametric Estimates,” Mimeo.
- HAUGH, D. AND C. MARTÍNEZ-TOLEDANO (2017): “The Distribution of Taxable Income and Fiscal Benefits in Spain: New Evidence from Personal Income Tax Returns (2002-2011),” OECD Economics Department Working Papers, No. 1427, OECD Publishing, Paris.
- HEATHCOTE, J., J. STORESLETTEN, AND G. L. VIOLANTE (2009): “Quantitative Macroeconomics with Heterogeneous Households,” *Annual Review of Economics*, 1, 319–354.
- HEATHCOTE, J., K. STORESLETTEN, AND G. L. VIOLANTE (2017): “Optimal Tax Progressivity: An Analytical Framework,” *The Quarterly Journal of Economics*, 132, 1693–1754.
- HERNÁNDEZ DE COS, P. AND D. LÓPEZ-RODRÍGUEZ (2014): “Tax Structure and Revenue-Raising Capacity in Spain: A Comparative Analysis with the EU,” Banco de España Occasional Paper N. 1406.
- HOLTER, H., D. KRUEGER, AND S. STEPANCHUK (2018): “How Do Tax Progressivity and Household Heterogeneity Affect Laffer Curves?” Working Paper, University of Oslo.
- KRUEGER, D., K. MITMAN, AND F. PERRI (2016): “Macroeconomics and Household Heterogeneity,” in *Handbook of Macroeconomics*, ed. by J. B. Taylor and H. Uhlig, New York and Amsterdam: Elsevier, vol. 2, 843–921.
- LABEAGA, J. M., X. OLIVER, AND A. SPADARO (2008): “Discrete Choice Models of Labor Supply, Behavioural Microsimulation and the Spanish Tax Reforms,” *The Journal of Economic Inequality*, 6, 247–273.
- LÓPEZ-LABORDA, J., J. VALLÉS-GIMÉNEZ, AND A. ZÁRATE-MARCO (2018): “Income Shifting in the Spanish Dual Income Tax,” *Fiscal Studies*, 39, 95–120.
- LÓPEZ-RODRÍGUEZ, D. AND C. GARCÍA CIRIA (2018): “Estructura Impositiva de España en el Contexto de la Unión Europea,” Banco de España Documento Ocasional N. 1810.
- MARTÍNEZ-TOLEDANO, C. (2017): “Housing Bubbles, Offshore Assets and Wealth Inequality in Spain,” WID.world Working Paper Series N. 2017/19.
- PEICHL, A. (2016): “Linking Microsimulation and CGE Models,” *International Journal of Microsimulation*, 9, 167–174.

- PÉREZ LÓPEZ, C., J. VILLANUEVA GARCÍA, I. MOLINERO MUÑOZ, R. MARTÍN FERNÁNDEZ, AND L. RODRÍGUEZ DE LAS HERAS (2018): “La muestra de IRPF de 2015: descripción general y principales magnitudes,” Instituto de Estudios Fiscales Documento de Trabajo 4/2018.
- RICKER, W. E. (1954): “Stock and Recruitment,” *Journal of the Fisheries Research Board of Canada*, 11, 559–623.
- ROJAS, J. (2005): “Life-Cycle Earnings, Cohort Size Effects and Social Security: A Quantitative Exploration,” *Journal of Public Economics*, 89, 465–485.
- SÁNCHEZ MARTÍN, A. R. AND V. SÁNCHEZ MARCOS (2010): “Demographic Change and Pension Reform in Spain: An Assessment in a Two-earner, OLG Model,” *Fiscal Studies*, 31, 405–452.

Appendix

A Additional Tables

TABLE A.1
DESCRIPTIVE STATISTICS OF DIFFERENT SAMPLES (2015)

	% of Taxpayers	Gross Income (€)	Labor Income (€)	Capital Income (€)	Self-employment Income (€)	Average Tax Rate	Age	% of Single Filers
	(1)	(2)	(3)	(4)	(5)	(6)	(7)	(8)
All taxpayers	100.0%	23,933	20,231	2,376	1,326	7.7%	50.2	79.8%
Positive total income	98.8%	24,289	20,474	2,419	1,395	7.7%	50.3	79.7%
+ Non-negative income sources	96.7%	24,292	20,447	2,410	1,435	7.7%	50.4	80.0%
+ Average tax rate below statutory max. (final sample)	96.7%	24,291	20,447	2,410	1,435	7.7%	50.4	80.0%

Notes: This table depicts the average of the column variables of all taxpayers (first row) and of those restricted to meet certain criteria (second to fourth rows, where each criterion is added to those of the previous row). Taxpayers in the final sample fulfill the following criteria: they earn a positive amount of gross income, they have non-negative gross income sources (labor, capital and self-employment), and they face an average tax rate below the statutory maximum marginal tax rate.

TABLE A.2
DISTRIBUTION OF INDIVIDUAL INCOME AND INCOME SOURCES: AGES 16-64 (2015)

Quantiles	Income Definition			Gross Income Sources		
	Gross Income	Adjusted Gross Income	Taxable Income	Labor Income	Capital Income	Self- employment Income
	(1)	(2)	(3)	(4)	(5)	(6)
<i>Bottom</i>						
1%	0.0%	0.0%	0.0%	0.0%	0.0%	0.0%
1-5%	0.3%	0.0%	0.0%	0.2%	1.0%	0.7%
5-10%	0.9%	0.3%	0.3%	0.8%	1.5%	2.0%
<i>Quintiles</i>						
1st (bottom 20%)	4.3%	1.8%	1.8%	3.8%	6.2%	8.3%
2nd (20-40%)	10.2%	8.2%	8.2%	10.1%	7.5%	14.7%
3rd (40-60%)	15.5%	15.5%	15.3%	16.1%	9.5%	14.8%
4th (60-80%)	22.8%	23.4%	23.3%	24.3%	12.3%	15.1%
5th (80-100%)	47.2%	51.0%	51.3%	45.8%	64.5%	47.1%
<i>Top</i>						
90-95%	10.3%	11.0%	11.0%	10.7%	8.2%	7.4%
95-99%	12.1%	13.2%	13.2%	11.9%	13.9%	13.1%
1%	9.0%	10.3%	10.6%	6.3%	32.9%	18.5%
<i>Other statistics</i>						
Gini coefficient	0.43	0.49	0.5	0.46	0.9	0.95
Var - log income	1.19	3.41	3.31	0.92	8.75	3.08
P90/P10	8.09	22.71	22.67	8.03	1691.02	74.40
P50/P10	3.42	9.11	8.94	3.51	113.02	17.14
P90/P50	2.37	2.49	2.53	2.29	14.96	4.34

Notes: This table displays the distribution of gross income, adjusted gross income and taxable income, as well as the distribution of gross income sources (labor, capital, and self-employment) for the sample of 2015 individuals aged 16-64. The Gini coefficient in columns (4) to (6) are computed including the observations with zero income, while the percentile ratios of those columns *exclude* them.

TABLE A.3
INDIVIDUAL GROSS INCOME CUTOFFS
AND AVERAGE INCOME LEVELS: AGES 16-64 (€, 2015)

Quantiles	Cutoffs		Average Income		
	Gross Income	Gross Income	Labor Income	Capital Income	Self-employment Income
	(1)	(2)	(3)	(4)	(5)
<i>Bottom</i>					
1%	0	106	21	76	9
1-5%	313	1,726	974	445	307
5-10%	3,177	4,526	3,327	529	670
<i>Quintiles</i>					
1st (bottom 20%)	0	5,222	3,993	547	681
2nd (20-40%)	9,301	12,527	10,654	658	1,214
3rd (40-60%)	15,664	19,074	17,025	833	1,216
4th (60-80%)	22,974	27,963	25,633	1,084	1,245
5th (80-100%)	34,192	58,038	48,479	5,672	3,887
<i>Top</i>					
90-95%	44,847	50,780	45,460	2,875	2,445
95-99%	58,758	74,219	62,725	6,108	5,386
1%	106,662	221,302	132,948	57,907	30,448

Notes: This table displays the gross income cutoffs as well as the average of gross income sources across the gross income distribution according to the 2015 sample of taxpayers aged 16-64.

TABLE A.4
SOURCES OF INDIVIDUAL TAX DEDUCTIONS (2015)

Quantiles	Social Security Contribu- tions	Labor Income	Joint Filing	Contribu- tions to Private Pensions	Other
	(1)	(2)	(3)	(4)	(5)
<i>Bottom</i>					
1%	3.8%	36.4%	26.4%	1.8%	31.6%
1-5%	4.0%	71.3%	11.4%	2.2%	11.0%
5-10%	3.6%	84.9%	4.7%	1.9%	5.0%
<i>Quintiles</i>					
1st (bottom 20%)	4.2%	82.7%	6.0%	1.8%	5.3%
2nd (20-40%)	9.2%	79.2%	8.3%	1.6%	1.7%
3rd (40-60%)	22.7%	58.7%	14.2%	2.5%	1.9%
4th (60-80%)	28.4%	53.7%	12.4%	3.4%	2.1%
5th (80-100%)	32.9%	43.2%	9.7%	10.2%	3.9%
<i>Top</i>					
90-95%	36.9%	40.4%	8.7%	10.4%	3.6%
95-99%	34.8%	34.5%	7.7%	17.8%	5.2%
1%	25.5%	28.2%	6.9%	27.2%	12.1%
<i>Total</i>	20.0%	62.8%	10.3%	4.0%	2.9%

Notes: This table shows the distribution of different tax deductions across the income distribution. Each row adds up to 100.

TABLE A.5
SOURCES OF INDIVIDUAL TAX CREDITS (2015)

Quantiles	Family Allowance	House Purchases	Employed Mothers	Large Families	Regional	Other
	(1)	(2)	(3)	(4)	(5)	(6)
<i>Bottom</i>						
1%	98.1%	0.0%	0.7%	0.8%	0.0%	0.4%
1-5%	95.3%	0.0%	2.2%	1.8%	0.0%	0.7%
5-10%	93.8%	0.1%	3.2%	2.1%	0.0%	0.8%
<i>Quintiles</i>						
1st (bottom 20%)	95.3%	0.4%	2.4%	1.4%	0.0%	0.5%
2nd (20-40%)	93.7%	2.8%	1.8%	0.8%	0.6%	0.3%
3rd (40-60%)	86.5%	7.5%	1.3%	0.6%	1.5%	2.7%
4th (60-80%)	86.1%	8.9%	1.2%	0.5%	1.1%	2.1%
5th (80-100%)	83.5%	10.9%	0.9%	0.9%	0.5%	3.3%
<i>Top</i>						
90-95%	82.7%	11.5%	0.9%	1.0%	0.5%	3.4%
95-99%	80.7%	12.5%	0.7%	1.3%	0.5%	4.3%
1%	77.1%	11.3%	0.4%	1.8%	0.3%	9.0%
<i>Total</i>	88.7%	6.3%	1.5%	0.8%	0.8%	1.8%

Notes: This table shows the distribution of different tax credits across the income distribution. Each row adds up to 100.

TABLE A.6
PARAMETRIC ESTIMATES OF THE
AVERAGE TAX FUNCTIONS: AGES 16-64

Functions	Individuals 2015 (1)	Households 2013 (2)
<i>HSV</i>		
λ	0.8974 (0.0000)	0.8836 (0.0001)
τ	0.1474 (0.0001)	0.1192 (0.0002)
\bar{I}	48%	35%
MSE	0.0011171	0.0018804
<i>GS</i>		
b	0.3505 (0.0004)	0.3669 (0.0012)
s	0.0005 (0.0000)	0.0041 (0.0001)
p	2.4291 (0.0063)	1.5024 (0.0071)
\bar{I}	54%	42%
MSE	0.0011230	0.0019119

Notes: This table shows the parameter estimates of the effective average tax functions for 2015 individuals aged 16-64 and for households in 2013 whose principal earner is aged 16-64. \bar{I} is the percentage of mean income below which the effective taxes are estimated to be zero. Each column accounts for a different sample: individuals in 2015 and households in 2013. MSE stands for mean squared error. Standard errors are in parenthesis.

TABLE A.7
PARAMETRIC ESTIMATES OF THE AVERAGE TAX FUNCTIONS
(INDIVIDUALS, 2002-2015)

Functions	2002	2003	2004	2005	2006	2007	2008
	(1)	(2)	(3)	(4)	(5)	(6)	(7)
<i>HSV</i>							
λ	0.8970 (0.0001)	0.9078 (0.0001)	0.9033 (0.0001)	0.8970 (0.0001)	0.8894 (0.0001)	0.8913 (0.0001)	0.9053 (0.0000)
τ	0.1252 (0.0001)	0.1241 (0.0001)	0.1229 (0.0001)	0.1195 (0.0001)	0.1156 (0.0001)	0.1245 (0.0001)	0.1379 (0.0001)
\bar{I}	42%	46%	44%	40%	36%	40%	49%
MSE	0.0014169	0.0013896	0.0014271	0.0014982	0.0015983	0.0014470	0.0011394
<i>GS</i>							
b	0.3459 (0.0006)	0.3174 (0.0004)	0.3090 (0.0004)	0.3017 (0.0004)	0.2876 (0.0003)	0.3032 (0.0004)	0.3191 (0.0003)
s	0.0020 (0.0000)	0.0006 (0.0000)	0.0006 (0.0000)	0.0006 (0.0000)	0.0005 (0.0000)	0.0004 (0.0000)	0.0001 (0.0000)
p	2.0628 (0.0058)	2.4855 (0.0062)	2.5488 (0.0065)	2.5528 (0.0067)	2.7027 (0.0077)	2.6345 (0.0082)	2.9935 (0.0069)
\bar{I}	36%	17%	16%	15%	14%	40%	45%
MSE	0.0013912	0.0013571	0.0013885	0.0014525	0.0015260	0.0014141	0.0011074
Functions	2009	2010	2011	2012	2013	2014	2015
	(8)	(9)	(10)	(11)	(12)	(13)	(14)
<i>HSV</i>							
λ	0.9069 (0.0000)	0.8944 (0.0000)	0.8942 (0.0000)	0.8916 (0.0000)	0.8902 (0.0000)	0.8894 (0.0000)	0.8985 (0.0000)
τ	0.1395 (0.0001)	0.1398 (0.0001)	0.1402 (0.0001)	0.1548 (0.0001)	0.1553 (0.0001)	0.1540 (0.0001)	0.1483 (0.0001)
\bar{I}	50%	45%	45%	48%	47%	47%	49%
MSE	0.0011167	0.0012300	0.0011788	0.0012360	0.0011890	0.0012009	0.0011271
<i>GS</i>							
b	0.3459 (0.0006)	0.3174 (0.0004)	0.3090 (0.0004)	0.3017 (0.0004)	0.2876 (0.0003)	0.3032 (0.0004)	0.3191 (0.0003)
s	0.0020 (0.0000)	0.0006 (0.0000)	0.0006 (0.0000)	0.0006 (0.0000)	0.0005 (0.0000)	0.0004 (0.0000)	0.0001 (0.0000)
p	2.0628 (0.0058)	2.4855 (0.0062)	2.5488 (0.0065)	2.5528 (0.0067)	2.7027 (0.0077)	2.6345 (0.0082)	2.9935 (0.0069)
\bar{I}	36%	17%	16%	15%	14%	40%	45%
MSE	0.0013912	0.0013571	0.0013885	0.0014525	0.0015260	0.0014141	0.0011074

Notes: This table shows the parameter estimates of the effective average tax functions for individuals in 2002 to 2015. \bar{I} is the percentage of mean income below which the effective taxes are estimated to be zero. MSE stands for mean squared error. Standard errors are in parenthesis.

TABLE A.8
PARAMETRIC ESTIMATES OF THE HOUSEHOLD TAX FUNCTIONS
BY MARITAL STATUS (2013)

Functions	All Households (1)	Single Households (2)	Married Households (3)
<i>HSV</i>			
λ	0.8823 (0.0001)	0.8454 (0.0001)	0.9043 (0.0001)
τ	0.1224 (0.0001)	0.1517 (0.0002)	0.1343 (0.0002)
\bar{I}	36%	33%	47%
MSE	0.0018442	0.0010442	0.0015058
<i>GS</i>			
b	0.3283 (0.0007)	0.3220 (0.0007)	0.3416 (0.0007)
s	0.0019 (0.0000)	0.0002 (0.0000)	0.0005 (0.0000)
p	1.8810 (0.0085)	3.0124 (0.0240)	2.2084 (0.0101)
\bar{I}	42%	40%	47%
MSE	0.0018817	0.0010444	0.0015377

Notes: This table shows the parameter estimates of the effective average tax functions for households by marital status. \bar{I} is the percentage of mean income below which the effective taxes are estimated to be zero. MSE stands for mean squared error. Standard errors are in parenthesis.

TABLE A.9
AFTER-TAX HOUSEHOLD INCOME DISTRIBUTION (2013):
TAX DATA VS EFF - *HSV* FUNCTION

Quantiles	Tax Data		EFF Fiscal Household		EFF Whole Household	
	Gross Income	After-tax Income	Gross Income	After-tax Income	Gross Income	After-tax Income
	(1)	(2)	(3)	(4)	(5)	(6)
<i>Bottom</i>						
1%	0.0%	0.0%	0.1%	0.1%	0.1%	0.1%
1-5%	0.3%	0.4%	0.7%	0.8%	0.7%	0.8%
5-10%	1.0%	1.2%	1.2%	1.4%	1.2%	1.5%
<i>Quintiles</i>						
1st (bottom 20%)	4.4%	5.2%	4.9%	5.8%	5.1%	6.2%
2nd (20-40%)	9.6%	10.9%	9.4%	10.7%	9.7%	11.1%
3rd (40-60%)	14.5%	15.7%	14.5%	15.7%	15.4%	16.3%
4th (60-80%)	21.7%	22.3%	22.7%	23.3%	22.6%	22.8%
5th (80-100%)	49.9%	45.8%	48.5%	44.6%	47.3%	43.6%
<i>Top</i>						
90-95%	11.0%	10.5%	11.0%	10.4%	10.8%	10.2%
95-99%	13.2%	11.8%	13.0%	11.7%	12.5%	11.4%
1%	9.7%	7.7%	8.0%	6.4%	7.6%	6.4%
<i>Other statistics</i>						
Gini coefficient	0.45	0.40	0.44	0.39	0.42	0.39
Var - log income	1.10	0.97	0.70	0.58	0.66	0.58
P90/P10	7.89	6.50	7.48	6.14	7.01	6.14
P50/P10	3.00	2.75	2.73	2.53	2.73	2.53
P90/P50	2.63	2.36	2.74	2.42	2.56	2.42

Notes: This table shows the distribution of gross and after-tax income from the tax return data aggregated at the household level and the Survey of Household Finances (EFF). Households in the EFF are constructed under two alternative definitions: fiscal household (columns 3 and 4), which consists of the head and their partner, and whole household (columns 5 and 6), which includes all household members. Note that the gross income in column (3) is the result of aggregating incomes from all members of the household even if they are negative, while column (5) is estimated for all members of the household restricted to have positive gross income and non-negative income sources. The after-tax income in the EFF (columns 6 and 8) are estimated by applying the estimated household tax function of the *HSV* specification to the gross household income in EFF.

TABLE A.10
EVOLUTION OF THE GROSS INCOME DISTRIBUTION IN TAX RETURNS (INDIVIDUALS)

Quantiles	2003	2004	2007	2010	2013	2015
	(1)	(2)	(3)	(4)	(5)	(6)
<i>Bottom</i>						
1%	0.0%	0.0%	0.0%	0.0%	0.0%	0.0%
1-5%	0.5%	0.6%	0.6%	0.4%	0.3%	0.3%
5-10%	1.3%	1.3%	1.3%	1.2%	1.1%	1.0%
<i>Quintiles</i>						
1st (bottom 20%)	5.5%	5.6%	5.5%	5.2%	4.8%	4.6%
2nd (20-40%)	10.8%	10.8%	10.5%	10.7%	10.5%	10.2%
3rd (40-60%)	15.1%	15.1%	14.8%	15.6%	15.8%	15.5%
4th (60-80%)	21.8%	21.7%	21.2%	22.6%	23.0%	22.7%
5th (80-100%)	46.7%	46.9%	48.0%	46.0%	46.0%	47.1%
<i>Top</i>						
90-95%	10.1%	10.1%	10.0%	10.2%	10.2%	10.1%
95-99%	12.2%	12.2%	12.3%	12.0%	11.9%	11.9%
1%	9.2%	9.6%	10.9%	8.2%	8.1%	9.5%
<i>Other statistics</i>						
Gini coefficient	0.41	0.41	0.42	0.41	0.41	0.42
Var - log income	0.81	0.78	0.81	1.03	1.07	1.14
P90/P10	5.84	5.82	5.75	6.19	7.07	7.31
P50/P10	2.47	2.47	2.44	2.67	3.07	3.15
P90/P50	2.36	2.36	2.36	2.32	2.30	2.32

TABLE A.11

EVOLUTION OF THE AFTER-TAX INCOME DISTRIBUTION IN TAX RETURNS (INDIVIDUALS)

Quantiles	2003	2004	2007	2010	2013	2015
	(1)	(2)	(3)	(4)	(5)	(6)
<i>Bottom</i>						
1%	0.0%	0.0%	0.0%	0.0%	0.0%	0.0%
1-5%	0.6%	0.6%	0.7%	0.5%	0.4%	0.4%
5-10%	1.5%	1.5%	1.5%	1.4%	1.2%	1.2%
<i>Quintiles</i>						
1st (bottom 20%)	6.3%	6.4%	6.4%	6.1%	5.6%	5.3%
2nd (20-40%)	12.1%	12.0%	11.8%	12.1%	12.1%	11.8%
3rd (40-60%)	16.3%	16.2%	16.0%	16.9%	17.2%	16.9%
4th (60-80%)	22.5%	22.3%	21.7%	23.0%	23.6%	23.2%
5th (80-100%)	42.9%	43.1%	44.1%	41.9%	41.6%	42.8%
<i>Top</i>						
90-95%	9.6%	9.5%	9.4%	9.5%	9.6%	9.5%
95-99%	10.8%	10.8%	10.9%	10.6%	10.4%	10.5%
1%	7.5%	8.0%	9.3%	6.6%	6.3%	7.6%
<i>Other statistics</i>						
Gini coefficient	0.36	0.37	0.37	0.36	0.36	0.38
Var - log income	0.72	0.68	0.70	0.91	0.94	1.01
P90/P10	4.95	4.93	4.78	5.09	5.75	6.00
P50/P10	2.34	2.33	2.27	2.48	2.83	2.93
P90/P50	2.12	2.11	2.1	2.06	2.03	2.05

TABLE A.12
EVOLUTION OF THE GROSS INCOME DISTRIBUTION IN TAX RETURNS
(HOUSEHOLDS)

Quantiles	2004	2007	2010	2013
	(1)	(2)	(3)	(4)
<i>Bottom</i>				
1%	0.0%	0.0%	0.0%	0.0%
1-5%	0.5%	0.5%	0.3%	0.3%
5-10%	1.1%	1.1%	1.0%	1.0%
<i>Quintiles</i>				
1st (bottom 20%)	4.7%	4.6%	4.4%	4.4%
2nd (20-40%)	9.4%	9.0%	9.4%	9.6%
3rd (40-60%)	13.8%	13.3%	14.2%	14.5%
4th (60-80%)	20.7%	20.1%	21.5%	21.7%
5th (80-100%)	51.4%	53.0%	50.4%	49.9%
<i>Top</i>				
90-95%	10.9%	10.8%	11.2%	11.0%
95-99%	13.5%	13.6%	13.5%	13.2%
1%	11.3%	13.4%	9.7%	9.7%
<i>Other statistics</i>				
Gini coefficient	0.46	0.48	0.45	0.45
Var - log income	0.91	0.94	1.18	1.10
P90/P10	7.45	7.23	7.64	7.89
P50/P10	2.65	2.65	2.85	3.00
P90/P50	2.81	2.73	2.68	2.63

TABLE A.13
EVOLUTION OF THE AFTER-TAX INCOME DISTRIBUTION IN TAX RETURNS
(HOUSEHOLDS)

Quantiles	2004	2007	2010	2013
	(1)	(2)	(3)	(4)
<i>Bottom</i>				
1%	0.0%	0.0%	0.0%	0.0%
1-5%	0.5%	0.5%	0.4%	0.4%
5-10%	1.3%	1.3%	1.2%	1.2%
<i>Quintiles</i>				
1st (bottom 20%)	5.4%	5.4%	5.2%	5.2%
2nd (20-40%)	10.5%	10.1%	10.7%	10.9%
3rd (40-60%)	14.9%	14.4%	15.4%	15.7%
4th (60-80%)	21.4%	20.7%	22.1%	22.3%
5th (80-100%)	47.9%	49.4%	46.7%	45.8%
<i>Top</i>				
90-95%	10.5%	10.3%	10.7%	10.5%
95-99%	12.2%	12.3%	12.2%	11.8%
1%	9.7%	11.7%	8.0%	7.7%
<i>Other statistics</i>				
Gini coefficient	0.42	0.44	0.41	0.40
Var - log income	0.81	0.82	1.06	0.97
P90/P10	6.30	6.09	6.40	6.50
P50/P10	2.50	2.45	2.63	2.75
P90/P50	2.52	2.49	2.44	2.36

TABLE A.14
EVOLUTION OF THE GROSS INCOME DISTRIBUTION IN EFF
(FISCAL HOUSEHOLDS)

Quantiles	2004	2007	2010	2013
	(1)	(2)	(3)	(4)
<i>Bottom</i>				
1%	0.0%	0.1%	0.0%	0.1%
1-5%	0.6%	0.7%	0.6%	0.7%
5-10%	1.2%	1.2%	1.2%	1.2%
<i>Quintiles</i>				
1st (bottom 20%)	5.1%	4.9%	4.7%	4.9%
2nd (20-40%)	9.8%	9.5%	9.0%	9.4%
3rd (40-60%)	14.6%	14.7%	14.3%	14.5%
4th (60-80%)	21.7%	21.7%	22.1%	22.7%
5th (80-100%)	48.9%	49.2%	49.9%	48.5%
<i>Top</i>				
90-95%	11.3%	10.8%	10.9%	11.0%
95-99%	13.1%	12.5%	13.4%	13.0%
1%	8.6%	10.3%	9.1%	8.0%
<i>Other statistics</i>				
Gini coefficient	0.43	0.44	0.45	0.44
Var - log income	0.75	0.68	0.78	0.70
P90/P10	7.13	7.44	7.40	7.48
P50/P10	2.72	2.94	2.67	2.73
P90/P50	2.62	2.53	2.77	2.74

Notes: This table shows the evolution of gross income as estimated in the EFF. Households are defined as fiscal households, i.e. they include the reference person and their spouse.

TABLE A.15
EVOLUTION OF THE AFTER-TAX INCOME DISTRIBUTION IN EFF:
GS FUNCTION - FISCAL HOUSEHOLDS

Quantiles	2004	2007	2010	2013
	(1)	(2)	(3)	(4)
<i>Bottom</i>				
1%	0.0%	0.1%	0.0%	0.1%
1-5%	0.7%	0.8%	0.6%	0.8%
5-10%	1.4%	1.4%	1.4%	1.4%
<i>Quintiles</i>				
1st (bottom 20%)	5.7%	5.7%	5.4%	5.8%
2nd (20-40%)	10.8%	10.5%	10.2%	10.6%
3rd (40-60%)	15.7%	15.8%	15.4%	15.7%
4th (60-80%)	22.3%	22.3%	22.7%	23.4%
5th (80-100%)	45.5%	45.9%	46.2%	44.6%
<i>Top</i>				
90-95%	10.6%	10.2%	10.3%	10.3%
95-99%	11.9%	11.4%	12.1%	11.6%
1%	7.3%	8.8%	7.7%	6.6%
<i>Other statistics</i>				
Gini coefficient	0.40	0.40	0.41	0.39
Var - log income	0.66	0.58	0.67	0.58
P90/P10	6.04	6.26	6.16	6.10
P50/P10	2.57	2.75	2.51	2.54
P90/P10	2.35	2.27	2.45	2.40

Notes: This table shows the evolution of after-tax income as estimated in the EFF. Households are defined as fiscal households, i.e. they include the reference person and their spouse. After-tax income is estimated by applying the GS tax function as estimated in column (2) of Table 10 to the household gross income.

TABLE A.16
EVOLUTION OF THE AFTER-TAX INCOME DISTRIBUTION IN EFF:
HSV FUNCTION - FISCAL HOUSEHOLDS

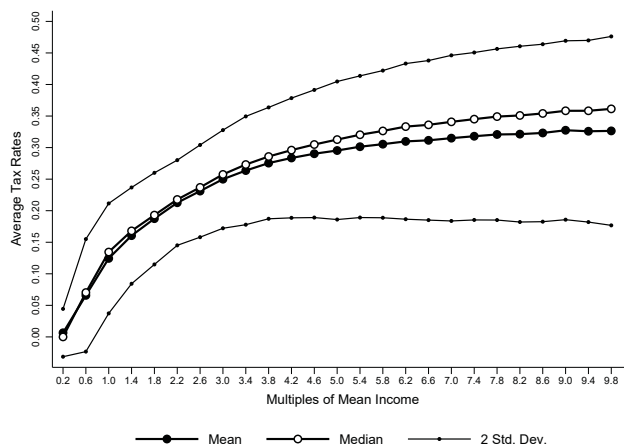
Quantiles	2004	2007	2010	2013
	(1)	(2)	(3)	(4)
<i>Bottom</i>				
1%	0.0%	0.1%	0.0%	0.1%
1-5%	0.7%	0.8%	0.6%	0.8%
5-10%	1.4%	1.4%	1.4%	1.4%
<i>Quintiles</i>				
1st (bottom 20%)	5.7%	5.7%	5.5%	5.8%
2nd (20-40%)	10.9%	10.5%	10.2%	10.7%
3rd (40-60%)	15.6%	15.8%	15.5%	15.7%
4th (60-80%)	22.2%	22.3%	22.7%	23.3%
5th (80-100%)	45.6%	45.7%	46.1%	44.6%
<i>Top</i>				
90-95%	10.8%	10.3%	10.4%	10.4%
95-99%	12.1%	11.6%	12.2%	11.7%
1%	7.1%	8.2%	7.3%	6.4%
<i>Other statistics</i>				
Gini coefficient	0.39	0.40	0.41	0.39
Var - log income	0.65	0.58	0.67	0.58
P90/P10	6.08	6.31	6.19	6.14
P50/P10	2.55	2.74	2.51	2.53
P90/P10	2.38	2.31	2.47	2.42
Gini	0.39	0.40	0.41	0.39
Var - log	0.65	0.58	0.67	0.58

Notes: This table depicts the over time evolution of after-tax income as estimated in the EFF. Households are defined as fiscal households, i.e. they include the reference person and their spouse. After-tax income is estimated by applying the HSV tax function as estimated in column (2) of Table 10 to the household gross income.

B Additional Figures

FIGURE A.1

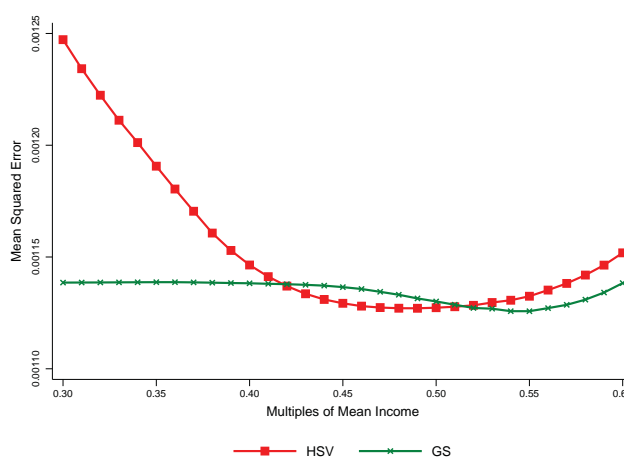
MEAN AND MEDIAN OF INDIVIDUAL EFFECTIVE TAX RATES (2015)



Notes: This figure depicts the 2015 mean and median of effective average tax rates (± 2 standard deviations) across different multiples of mean income. Each data point corresponds to the mean average tax rate of taxpayers whose income is larger than or equal to the point in the x-axis and less than the next point. For the last point (9.8), the tax rate is calculated for incomes between 9.8 and 10.2 of mean income.

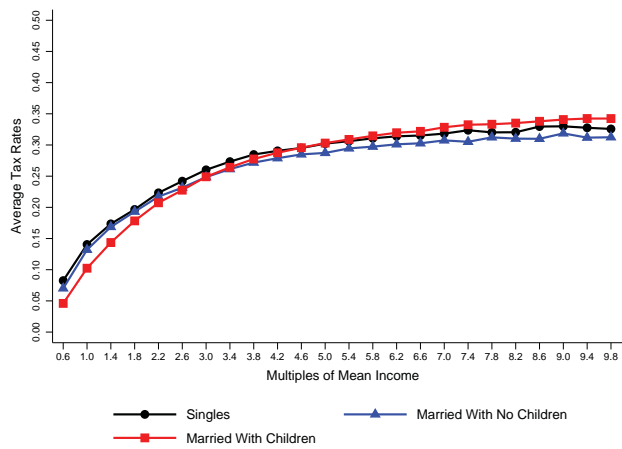
FIGURE A.2

ONE-FUNCTION APPROACH: MEAN SQUARED ERROR OF EACH SPECIFICATION



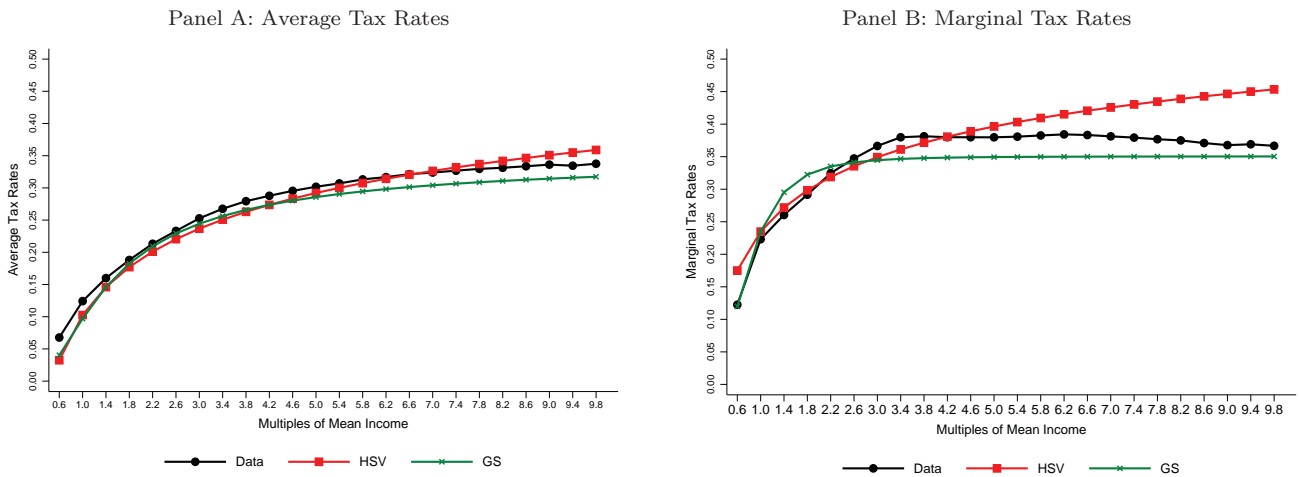
Notes: This figure depicts the MSE of the two tax functions estimated in Section 5.1. Note that the minimization of the MSE determines the income level below which the tax rate is estimated to be zero.

FIGURE A.3
INDIVIDUAL EFFECTIVE AVERAGE TAX RATES
BY MARITAL STATUS (2015)



Notes: The tax rate functions are evaluated at the corresponding point in the x-axis.

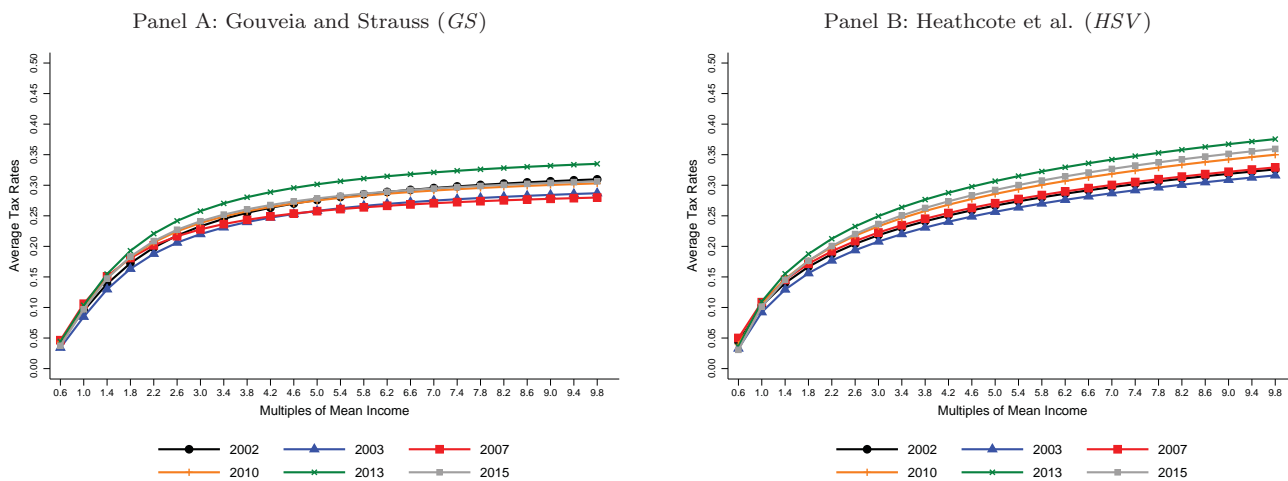
FIGURE A.4
EFFECTIVE TAX FUNCTIONS: AGES 16-64 (INDIVIDUALS, 2015)



Notes: This figure plots the mean effective tax rates by income level as well as the predicted rates resulting from the estimated tax functions (*HSV* and *GS* specifications) for individuals aged 16-64. The panel A shows the effective average tax rates, whereas the panel B depicts the implied marginal rate functions. Each data point corresponds to the mean tax rate of taxpayers whose income is larger than or equal to the point in the x-axis and less than the next point. For the last point (9.8), the tax rate is calculated for incomes between 9.8 and 10.2 of mean income. The tax rate functions are evaluated at the corresponding point in the x-axis. The parametric estimates of the average tax rate functions can be found in the first column of Table A.6. See section 4.2 for details on the computation of effective marginal rates.

FIGURE A.5

CHANGES IN EFFECTIVE TAX FUNCTIONS (2002-2015)



Notes: This figure shows the evolution of the *GS* (panel A) and *HSV* (panel B) effective tax functions over time.

BANCO DE ESPAÑA PUBLICATIONS

WORKING PAPERS

- 1820 MARIO ALLOZA, PABLO BURRIEL and JAVIER J. PÉREZ: Fiscal policies in the euro area: revisiting the size of spillovers.
- 1821 MARTA MARTÍNEZ-MATUTE and ALBERTO URTASUN: Uncertainty, firm heterogeneity and labour adjustments. Evidence from European countries.
- 1822 GABRIELE FIORENTINI, ALESSANDRO GALESÌ, GABRIEL PÉREZ-QUIRÓS and ENRIQUE SENTANA: The rise and fall of the natural interest rate.
- 1823 ALBERTO MARTÍN, ENRIQUE MORAL-BENITO and TOM SCHMITZ: The financial transmission of housing bubbles: evidence from Spain.
- 1824 DOMINIK THALER: Sovereign default, domestic banks and exclusion from international capital markets.
- 1825 JORGE E. GALÁN and JAVIER MENCÍA: Empirical assessment of alternative structural methods for identifying cyclical systemic risk in Europe.
- 1826 ROBERTO BLANCO and NOELIA JIMÉNEZ: Credit allocation along the business cycle: evidence from the latest boom bust credit cycle in Spain.
- 1827 ISABEL ARGIMÓN: The relevance of currency-denomination for the cross-border effects of monetary policy.
- 1828 SANDRA GARCÍA-URIBE: The effects of tax changes on economic activity: a narrative approach to frequent anticipations.
- 1829 MATÍAS CABRERA, GERALD P. DWYER and MARÍA J. NIETO: The G-20 regulatory agenda and bank risk.
- 1830 JACOPO TIMINI and MARINA CONESA: Chinese exports and non-tariff measures: testing for heterogeneous effects at the product level.
- 1831 JAVIER ANDRÉS, JOSÉ E. BOSCA, JAVIER FERRI and CRISTINA FUENTES-ALBERO: Households' balance sheets and the effect of fiscal policy.
- 1832 ÓSCAR ARCE, MIGUEL GARCÍA-POSADA, SERGIO MAYORDOMO and STEVEN ONGENA: Adapting lending policies when negative interest rates hit banks' profits.
- 1833 VICENTE SALAS, LUCIO SAN JUAN and JAVIER VALLÉS: Corporate cost and profit shares in the euro area and the US: the same story?
- 1834 MARTÍN GONZÁLEZ-EIRAS and CARLOS SANZ: Women's representation in politics: voter bias, party bias, and electoral systems.
- 1835 MÓNICA CORREA-LÓPEZ and BEATRIZ DE BLAS: Faraway, so close! Technology diffusion and firm heterogeneity in the medium term cycle of advanced economies.
- 1836 JACOPO TIMINI: The margins of trade: market entry and sector spillovers, the case of Italy (1862-1913).
- 1837 HENRIQUE S. BASSO and OMAR RACHEDI: The young, the old, and the government: demographics and fiscal multipliers.
- 1838 PAU ROLDÁN and SONIA GILBUKH: Firm dynamics and pricing under customer capital accumulation.
- 1839 GUILHERME BANDEIRA, JORDI CABALLÉ and EUGENIA VELLA: Should I stay or should I go? Austerity, unemployment and migration.
- 1840 ALESSIO MORO and OMAR RACHEDI: The changing structure of government consumption spending.
- 1841 GERGELY GANICS, ATSUSHI INOUE and BARBARA ROSSI: Confidence intervals for bias and size distortion in IV and local projections – IV models.
- 1842 MARÍA GIL, JAVIER J. PÉREZ, A. JESÚS SÁNCHEZ and ALBERTO URTASUN: Nowcasting private consumption: traditional indicators, uncertainty measures, credit cards and some internet data.
- 1843 MATÍAS LAMAS and JAVIER MENCÍA: What drives sovereign debt portfolios of banks in a crisis context?
- 1844 MIGUEL ALMUNIA, POL ANTRÀS, DAVID LÓPEZ-RODRÍGUEZ and EDUARDO MORALES: Venting out: exports during a domestic slump.
- 1845 LUCA FORNARO and FEDERICA ROMEI: The paradox of global thrift.
- 1846 JUAN S. MORA-SANGUINETTI and MARTA MARTÍNEZ-MATUTE: An economic analysis of court fees: evidence from the Spanish civil jurisdiction.
- 1847 MIKEL BEDAYO, ÁNGEL ESTRADA and JESÚS SAURINA: Bank capital, lending booms, and busts. Evidence from Spain in the last 150 years.
- 1848 DANIEL DEJUÁN and CORINNA GHIRELLI: Policy uncertainty and investment in Spain.
- 1849 CRISTINA BARCELÓ and ERNESTO VILLANUEVA: The risk of job loss, household formation and housing demand: evidence from differences in severance payments.

- 1850 FEDERICO TAGLIATI: Welfare effects of an in-kind transfer program: evidence from Mexico.
- 1851 ÓSCAR ARCE, GALO NUÑO, DOMINIK THALER and CARLOS THOMAS: A large central bank balance sheet? Floor vs corridor systems in a New Keynesian environment.
- 1901 EDUARDO GUTIÉRREZ and ENRIQUE MORAL-BENITO: Trade and credit: revisiting the evidence.
- 1902 LAURENT CAVENAILE and PAU ROLDAN: Advertising, innovation and economic growth.
- 1903 DESISLAVA C. ANDREEVA and MIGUEL GARCÍA-POSADA: The impact of the ECB's targeted long-term refinancing operations on banks' lending policies: the role of competition.
- 1904 ANDREA ALBANESE, CORINNA GHIRELLI and MATTEO PICCHIO: Timed to say goodbye: does unemployment benefit eligibility affect worker layoffs?
- 1905 CORINNA GHIRELLI, MARÍA GIL, JAVIER J. PÉREZ and ALBERTO URTASUN: Measuring economic and economic policy uncertainty, and their macroeconomic effects: the case of Spain.
- 1906 CORINNA GHIRELLI, JAVIER J. PÉREZ and ALBERTO URTASUN: A new economic policy uncertainty index for Spain.
- 1907 ESTEBAN GARCÍA-MIRALLES, NEZIH GUNER and ROBERTO RAMOS: The Spanish personal income tax: facts and parametric estimates.